



# Waltham Abbey Police

## HISTORICAL COLLECTION

### Images 1940-1990

### Lippitts Hill

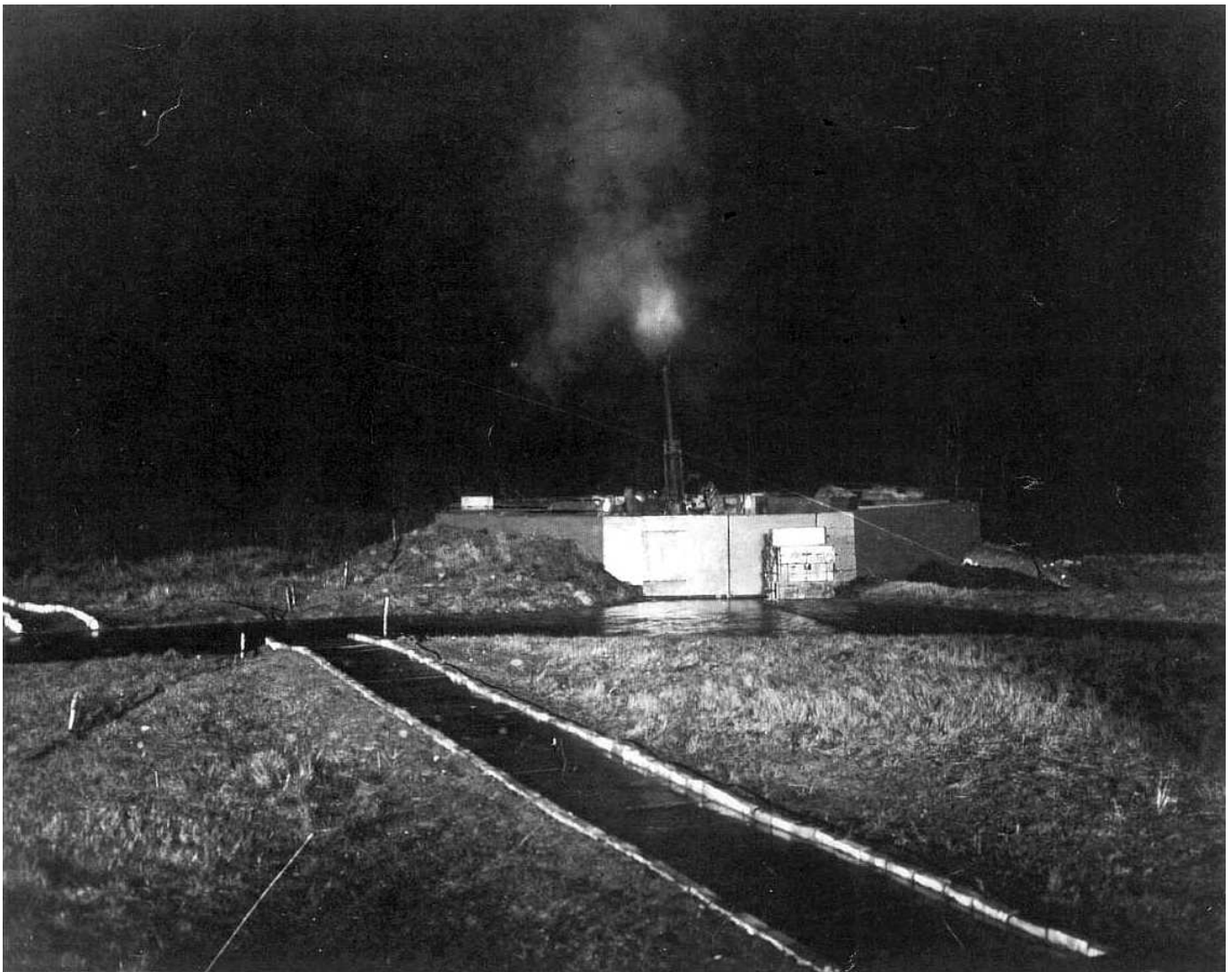
A selection of images from the Waltham Abbey Police Historical collection now held by Epping Forest District Museum—including those images originally sourced from the United States Marines archives and the Metropolitan Police Historical Collection.

For more information please contact

Epping Forest District Museum  
39-41 Sun Street  
Waltham Abbey  
Essex EN9 1EL  
+44 1992 716882  
museum@eppingforestdc.gov.uk  
Www.EppingForestDistrictMuseum.org.uk



The first official images of the military camp at Lippitts Hill were those taken by a US photographer.





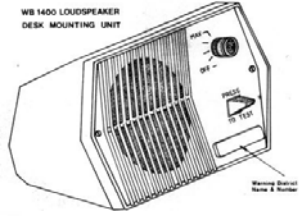
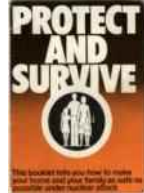
The series of US images follows the gunners into their barracks and into The Owl Public House opposite the main gates of the camp.





After the US guns moved out in 1944 the site was again a British gun site. There was little for the guns to defend against and by war end it was converted into a Prisoner of War Camp. Some of the inmates can be seen above. In 1946 one of the prisoners, Rudi Webber, carved a statue out of solid concrete. It can still be seen from the main gate.





The military camp remained in Care & Maintenance until the late 1950s and hosted the local police from time to time on Civil Defence work.

At a time when the military were looking to give up training needs for cadets, dogs and Civil Defence.

In later years this training included the setting up of a firearms school and then a base for all the armed police. Helicopters were based on site from 1967.

