



# Waltham Abbey Police

## HISTORICAL COLLECTION

### Images 1840-1910

### Waltham Abbey

A selection of images from the Waltham Abbey Police Historical collection now held by Epping Forest District Museum—including those images originally sourced from the Waltham Abbey Historical Society, and the Metropolitan Police Historical Collection.

For more information please contact

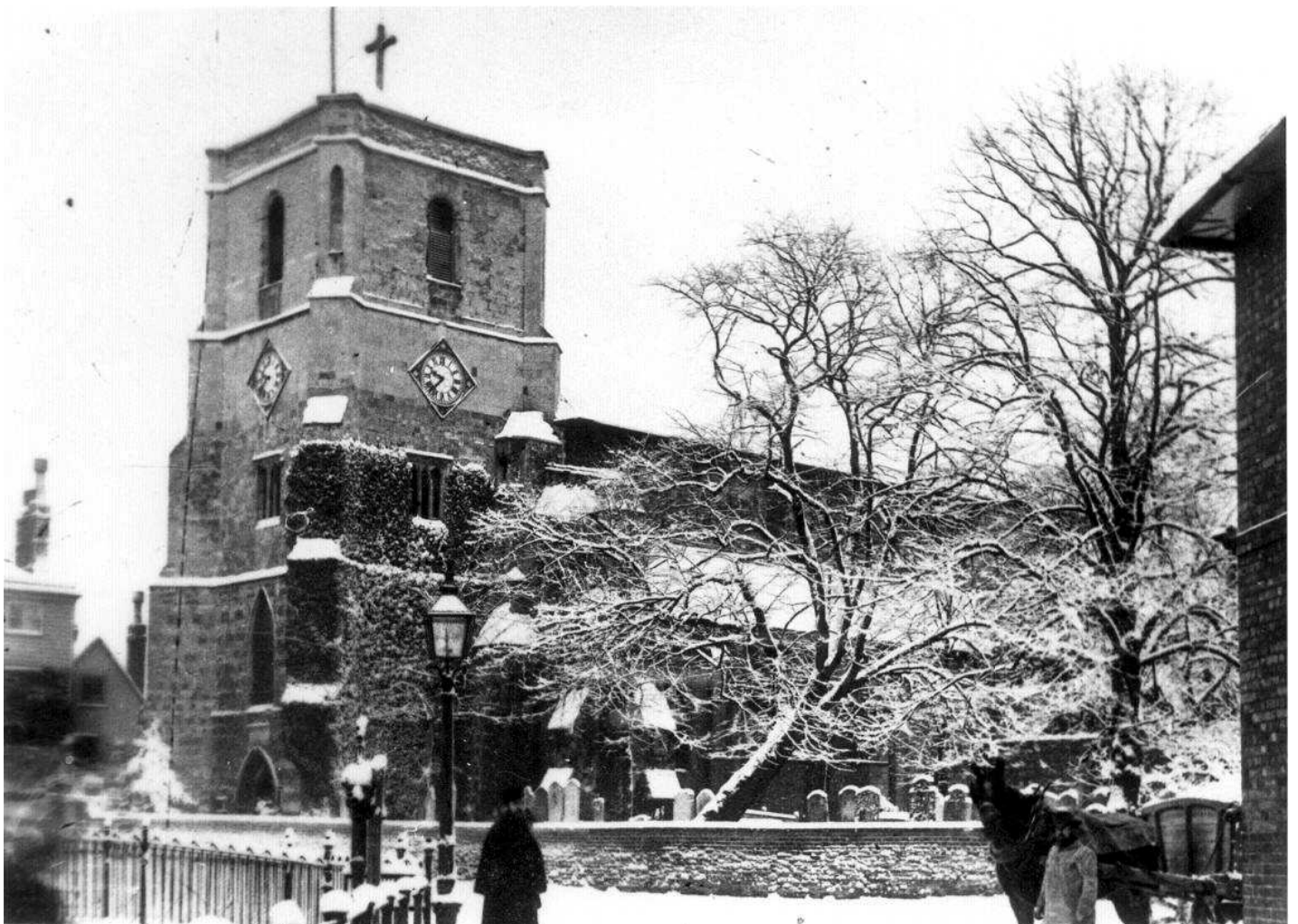
Epping Forest District Museum  
39-41 Sun Street  
Waltham Abbey  
Essex EN9 1EL  
+44 1992 716882  
[museum@eppingforestdc.gov.uk](mailto:museum@eppingforestdc.gov.uk)  
[www.EppingForestDistrictMuseum.org.uk](http://www.EppingForestDistrictMuseum.org.uk)



The Metropolitan Police moved in to the police station opposite the Abbey Church in January 1840. All police duties were undertaken in the ground floor rooms comprising a police room and cells. Upstairs was the room where the Vestry held its meeting and the Magistrates court sat.

In 1853 a fire station was added to the side of the building. After the police left the building was used as the library until the whole building was dismantled at the turn of the century.







# Retirement Gifts

The collection is not only the items it holds but keeping note of the whereabouts of items it can borrow for research or exhibition purposes.

The engraved pocket watch [above] presented to Sergeant Henry Haigh in 1895 is still held by the family but documented and photographed to provide research detail.

The barometer presented to Sergeant William Brooker is held by the museum along with a large number of images and other artefacts.

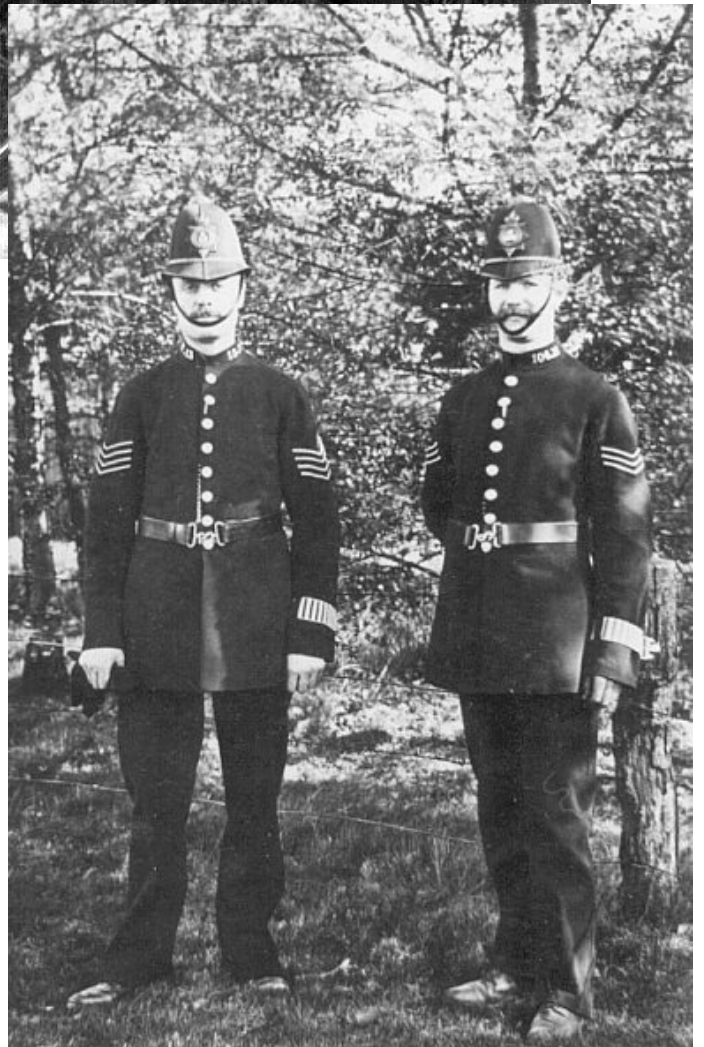
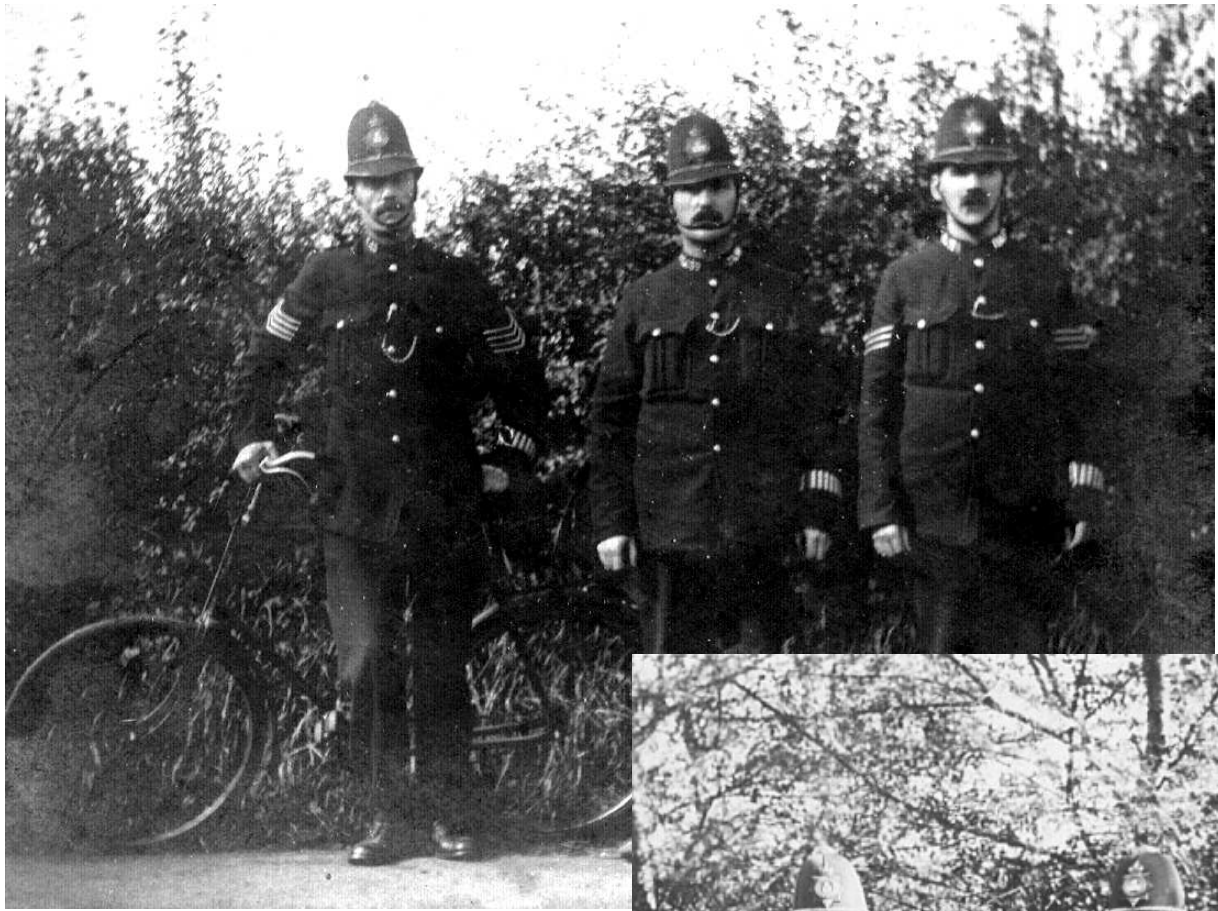


There may well be nine million bicycles in Beijing but there were never that number at Waltham Abbey!

When the first bicycles were issued to the station in about 1905 everyone made sure they had their photograph taken with it!

This is a selection of images possibly representing as many as two different machines.





In a period when postcards represented the quickly delivered means of communication there were many images of police to be found.