

Using pinpoint and iPlan to view maps and access Planning information

September 2008


Version 1

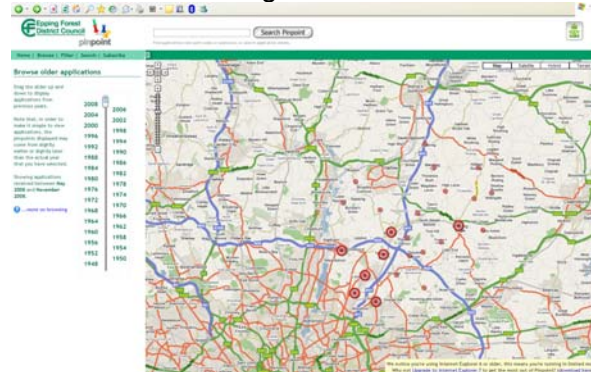
A brief guide on how to use and interpret our online mapping system

Basics


- Our online **pinpoint** mapping is available at www.eppingforestdc.gov.uk/pinpoint
- The online mapping system will provide you with an indication of the location of an application, you will need to view the detailed site plan to see the actual application boundaries.

View pinpoint maps

- When you open **pinpoint** mapping a map showing the whole district will open.
- There are a series of red 'targets' on the map, these correspond to the Parish and Town Councils in the district. 
- Click on the 'target' for the Parish you are interested in viewing information for

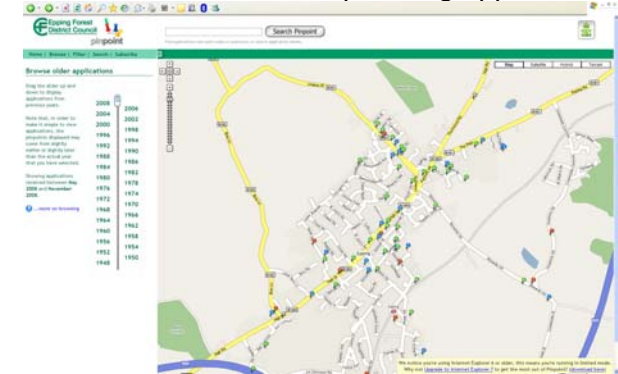


Changing the map

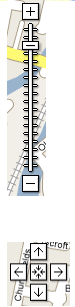
- In the top right corner there are four buttons 
- Map is the default option
- Satellite will display an aerial photograph or satellite image
- Hybrid will display a satellite image or aerial photo, but with road names overlaid on it
- Terrain displays a grey-scale relief map

Getting to the detail

- After you click on the second 'target' a map will open at a more detailed level. This map is for the area that the 'target' corresponds to.
- A series of 'pins' will appear on the map, each relates to a site that has planning applications.



- You can use the zoom control in the top left of the screen to zoom into the area you want to see
- You can click on the + or - symbols at the top and bottom to zoom in or out
- You can also click and drag the slider on the bar to zoom in and out
- To move around the map click on the arrows above the zoom control, or click on the map and drag it in the direction you want to move it.
- The control in the middle of the arrows will return the map to the last search result.

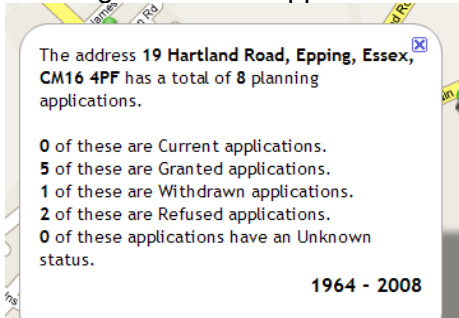


Viewing Information

- Each 'pin' on the map is linked to one or more applications.



- Clicking on any 'pin' will open a window showing details and applications for that point.



- The detailed version of the list will appear on the left hand side of the screen



- Click on the application number to view details of an application.
- The 'pins' are colour coded:
 - Current Applications – Blue
 - Granted Applications – Green
 - Refused Applications – Red
 - Withdrawn Applications – Yellow
 - Other or Undefined Applications – Grey
- If you click on **Click to see full details** our online planning system will open and display full details of the application.

Details Page for Planning Application - EPF/1063/08	
Site Address	220 High Street Epping Essex CM16 4AQ
Application Progress Summary	
Application Registered	30-05-2008
Comments Until	27-06-2008
Date of Committee	
Decision	Grant Permission (With Conditions) 08-07-2008

- If you click on **Click to see documents associated with the application** you will be able to access documentation and plans that we have available online.

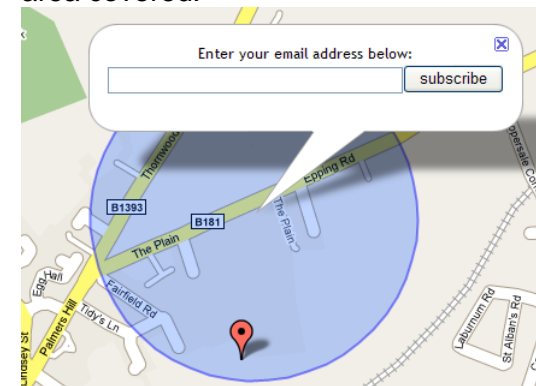
Customising the data shown

- In the top left hand corner of the screen
- Home** will open the key and give you basic details about the information displayed.
- Browse** opens a slider control which allows you to move backwards or forwards in time on the map to show different applications.
- Filter**
- Search** allows you to enter a full or partial postcode, and display all available applications for that area.
- Subscribe for updates:** see below
- Useful Links** will link you to our main website, and other useful planning sites.

Subscribe for updates

- This allows you register for email updates on new applications.
- When you click on this the window displays a list of distances, these would be radius from a point you are interested in (for example your home),
- Click in the circle next to the distance you want, this can be changed later if required.
- Now click on the map at the point you are interested in.

- A circle will appear on the map showing the area covered.



- If required you can now go back to the list and change the distance you want.
- Enter your email address in the space provided, then press **Subscribe**.
- You will be emailed when any new points appear in this area.
- This service is in addition to normal neighbour notifications and weekly list, it should not be solely relied upon as on some occasions, for large sites in particular, the pinpoint may fall outside the circle you specified but parts of the site may fall inside.

Information Disclaimer

Online mapping data currently covers most applications back to August 2005. Work to add more historical applications is ongoing. All new applications will normally be available through this system one or two days after registration.

In some cases the pin may not be on the property it relate tos, it may be at the start of the road instead, this is a result of the address data provided to us being incomplete, we are working to improve these instances. If you find any such cases please let us know at pinpoint@eppingforestdc.gov.uk

Mapping Extracts ©2008 Tele Atlas/Google Maps

The online data is an extract from the Planning & BC systems. It is provided solely in an attempt to be of assistance. However, due to ongoing data improvement work the list of applications provided may not be fully complete. If you choose to rely exclusively upon this data the Council cannot accept liability for any consequent use you may make of the information provided. Work is constantly in progress to improve the quality of this information. Should you require clarification of the above you should contact the Directorate of Planning.