

## Limes Farm Estate Regeneration – May 22 Drop-in Session FAQ’s

### 1) When will the works start?

The Council is currently going through the internal governance process related with appointing a successful Contractor to undertake the works. Once the Council has completed this process and appointed a successful Contractor, we will be able to share a construction programme with key dates. It is anticipated works will commence in September 22.

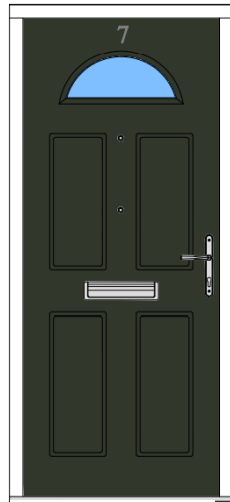
### 2) How long will the project last?

We anticipate the works lasting approximately 42 weeks.

### 3) What were the ballot results?

BLOCK REFERENCE	1 <sup>ST</sup> RANKED DOOR CHOICE	1 <sup>ST</sup> RANKED DOOR COLOUR	1 <sup>ST</sup> RANKED COMMUNAL WALL COLOUR	1 <sup>ST</sup> RANKED COMMUNAL FLOOR COLOUR
<b>1-57 Copperfield</b>	Casibrooke	White	Candy Floss	Rock Salt
<b>59-137 Copperfield</b>	Casibrooke	White	Candy Floss	Rock Salt
<b>147-213 Copperfield</b>	Casibrooke	White	Candy Floss	Rock Salt
<b>216-230 Limes Avenue</b>	Warwick	White	N/A	N/A
<b>306-320 Limes Avenue</b>	Casibrooke	White	N/A	N/A
<b>332-378 Limes Avenue</b>	Casibrooke	White	Candy Floss	Rock Salt
<b>380-468 Limes Avenue</b>	Casibrooke	White	Candy Floss	Rock Salt
<b>405-419 Copperfield</b>	Warwick	White	N/A	N/A
<b>476-542 Limes Avenue</b>	Casibrooke	White	Candy Floss	Rock Salt
<b>491-505 Copperfield</b>	Dover	Blue	N/A	N/A
<b>507-563 Copperfield</b>	Casibrooke	White	Candy Floss	Rock Salt
<b>565-653 Copperfield</b>	Casibrooke	White	Candy Floss	Rock Salt
<b>661-717 Copperfield</b>	Casibrooke	White	Candy Floss	Rock Salt

## DOOR STYLES



Casibrooke

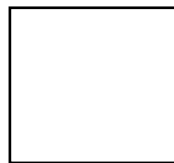


Warwick



Dover

## DOOR COLOUR

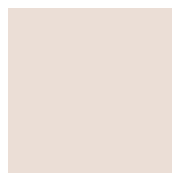


White



Blue

## COMMUNAL WALL COLOUR (red, green, yellow blocks)



Candy Floss

## COMMUNAL FLOOR COVERING COLOUR



Rock Salt

**4) Will residents have the chance to meet the successful Contractor?**

Yes, once the Council have appointed a successful contractor the Council will invite all residents to a 'meet the contractor' date. This will be an opportunity to meet the Contractor and their resident liaison team. More details to follow in due course.

**5) When will works to my block be undertaken?**

Sequencing of the works will be dictated by the Contractor and is usually based on the site conditions, such as access routes. Once we're in receipt of their construction programme will we update residents with anticipated start dates for each block.

**6) Will remediation work to the gates at Red, Green and Yellow block be included?**

Yes, the project will look to ease and adjust or replace all defective parts prior to redecorating the gates.

**7) I'm an LQ resident will you be replacing my doors and windows.**

Yes, the Council will be replacing all windows and doors (including balcony doors) to red, green and yellow blocks at Limes Farm estate.

**8) I'm an EFDC leaseholder when will I know how much the works will cost?**

All EFDC leaseholders will receive their Section 20 Stage 2 notice (Notice of Estimates) within the next week. On receipt should you have any queries or wish to discuss the payment options available please contact the Home Ownership team using the details below:

Telephone: 01992 564428

Email: [homeownershipteam@eppingforestdc.gov.uk](mailto:homeownershipteam@eppingforestdc.gov.uk) or [makinmade@eppingforestdc.gov.uk](mailto:makinmade@eppingforestdc.gov.uk)

**9) Who do I contact with general queries?**

Please feel free to write your queries into [majorwork@eppingforestdc.gov.uk](mailto:majorwork@eppingforestdc.gov.uk). All queries are responded to within five days.

For general day to day queries the project team are pleased to announce our new Resident Liaison Officer, Leanne Turner. Leanne will be here to assist with the project throughout its duration, details below.

Leanne Turner

Telephone: 07563398846

Email: [leturner@eppingforestdc.gov.uk](mailto:leturner@eppingforestdc.gov.uk)

**10) How do I get involved in the Works?**

If you would like to review what has been discussed to date and become involved in future discussions, then please follow the details below:

- To be involved with the Major Works focus groups please email:  
[getinvolved@eppingforestdc.gov.uk](mailto:getinvolved@eppingforestdc.gov.uk)

- To review previous minutes and presentations please visit:  
[www.eppingforestdc.gov.uk/housing/council-housing/limes-farm-regenerationproject/](http://www.eppingforestdc.gov.uk/housing/council-housing/limes-farm-regenerationproject/)

- To write in any queries you may have on the proposed Major Works to your block please email: [majorwork@eppingforestdc.gov.uk](mailto:majorwork@eppingforestdc.gov.uk)

**11) Who are my local block champions?**

The following block champions have been selected to assist the project:

Red Block: Amy Perridge, Lynn Moir, Clara Crush

Green Block: Nikki Jeffries, Rhia Warwick

Yellow Block: Melody Holland

Smaller Blocks (216-230, 306-320, 405-419, 491-505): Dean Crisp

**12) I'd like to be part of the Lime Farm Community Group; how do I join?**

To learn more about Limes Farm community group and how to become a member please visit [www.limesfarmcg.co.uk](http://www.limesfarmcg.co.uk).

**13) When is the next TRA meeting?**

The next TRA meeting will be held on 29<sup>th</sup> July at 1:00pm via Zoom. Invites to follow.