



Park Development Framework

Area Proposals for
Lee Valley
Regional Park

Foreword

Lee Valley Regional Park is known and recognised as one of the nation's great parks; a place that offers a unique combination of activities, sights and experiences.

For over 40 years the Lee Valley Regional Park Authority has been working alongside many partner organisations to transform the Lee Valley into a place for leisure, recreation, sport and nature.

Our new vision is to create a world class visitor destination in the Lee Valley bringing together a variety of landowners and partners.

The Park is a mosaic of award-winning open spaces, heritage sites, country parks, farms, golf courses, lakes and riverside trails, campsites, marinas, angling and boating locations. All of these attract more than 4.5 million visitors a year.

The Valley is being transformed by the London 2012 Games and Paralympic Games and the Authority will run four world class venues in legacy. These are Lee Valley White Water Centre near Waltham Cross, Hertfordshire – the only brand new London 2012 venue to open ahead of the Games and on Olympic Park in Stratford Lee Valley VeloPark, Lee Valley Hockey Centre and Lee Valley Tennis Centre.

The Lee Valley Regional Park Act 1966, which established the Lee Valley Regional Park Authority, placed a duty on the Authority to develop, improve, preserve and manage the Park, either directly or through others. Our Park Development Framework is a suite of documents that will collectively provide the blueprint for our future efforts: setting out proposals for what we want to achieve, how we plan to balance competing demands, and how we intend to make best use of the limited resources available. Once complete it will satisfy our duty to produce a plan of proposals as required under Section 14 of the Park Act.

We hope it will provide inspiration and focus for the future collective efforts of landowners within the Park, our partners, stakeholders and everyone with an interest in the Lee Valley and Lee Valley Regional Park.



Derrick Ashley
Chairman



Shaun Dawson
Chief Executive

The Park

The Lee Valley Regional Park was created on the 1st January 1967, through an Act of Parliament: the Lee Valley Regional Park Act 1966.

The creators of the Regional Park wanted to provide a destination for the growing populations of London, Essex and Hertfordshire to enjoy recreation and leisure activities unavailable elsewhere. The corridor alongside the River Lee was at that time a mix of derelict and operational industrial land, undeveloped marshlands, water supply reservoirs, farmland, glasshouses and municipal parks. The new Regional Park was designed to transform these areas to create a continuous corridor of open space and built leisure and sports facilities that would provide a wide range of recreation and leisure opportunities.

The purpose of the Park is clearly defined in the Park Act, as:

“[...] a place for the occupation of leisure, recreation, sport, games or amusements or any similar activity, for the provision of nature reserves and for the provision and enjoyment of entertainments of any kind.”

Section 12(1)
Lee Valley Regional Park Act 1966

Much has been achieved since the Park was created. The Park now includes 10,000 acres (over 4,000ha) and winds its way 26 miles: along the banks of the River Lee from Ware in Hertfordshire, down through Essex, North London, and through parts of the Olympic Park to East India Dock Basin on the River Thames.

The Park is a fantastic mix of world class sport and leisure venues, heritage sites, gardens, nature reserves and riverside trails; offering an endless range of things to do. It is easy to reach by bike, car, train, or on foot, and visitors can spend anything from a few hours to a few days enjoying and exploring.

The Park includes several of the exciting venues which contributed to the success of the London 2012 Olympic and Paralympic Games. These include legacy venues at the Velopark including the Velodrome and BMX course and tennis and hockey at Eton Manor.



The Park Authority

The Park Act, which established the Lee Valley Regional Park Authority, placed a duty on the Authority to develop, improve, preserve and manage the Park, either directly or through others.

We are working towards delivering this duty in three key ways:

1. As owner and manager of land and facilities within the Park

We own and manage approximately 3,800 acres (1,500ha) of the total Park area. It is our duty to use our available resources to develop and manage that estate. We know we will need to work closely with a range of partners, and seek additional resources and expertise, in order to deliver the features, facilities and activities that contribute to our vision and aims for the Park.

2. As a champion, leader, facilitator and coordinator of other landowners within the Park

The remaining 6,200 acres (2,500ha) of the Park is owned and managed by others. The success of our Park vision is hugely dependant on other landowners and managers working together towards a shared aspiration. A vital part of our future work is working alongside other land owners to achieve our vision for the Park; to work collectively towards Park-wide coordinated and complementary

facilities, attractions and activities, and to assist each other where appropriate with shared resources, advice and expertise.

3. As a statutory planning consultee

The Act confers on the Authority the role of a statutory planning consultee. This means that we must be consulted on any planning applications within, or which impacts on, the Park. We will use this role to continue to champion the Park and to do everything we can to ensure that local planning authorities give appropriate regard to our aims and purposes.

We will:

- *Oppose in principle any planning applications relating to land within the Park that include land uses which are not compliant with the purpose of the Park (as set out in Section 12 of the Park Act)*
- *Seek to ensure that all planning approvals relating to land within the Park will lead to a positive contribution to our vision, aims and objectives*
- *Seek to ensure that all planning approvals relating to land outside the Park boundaries will have no negative impact on the Park, and where possible lead to a positive contribution to our vision, aims and objectives.*



The Park Development Framework

The Park Development Framework sets out the Park Authority's aspirations for future development and management of the Park.

There are a number of core documents that make up the Park Development Framework:

Vision, Aims and Principles (adopted July 2010)

and

Objectives and proposals which will be produced in two complementary documents. These focus on:

- *Thematic Proposals*, (adopted January 2011) setting out our proposals throughout the Park for each of our six aims - Visitors, Sport and Recreation, Biodiversity, Community, Landscape and Heritage, Environment
- *Area Proposals* (this document), setting out our proposals for the Park on a more detailed location basis.

There is also a range of other documents that provide additional information to support the core documents identified above.

This includes the Part Two Area Proposals included in the adopted *Park Plan 2000* and the *Part One Strategic Policy Framework*. For more information please refer to the Park Development Scheme

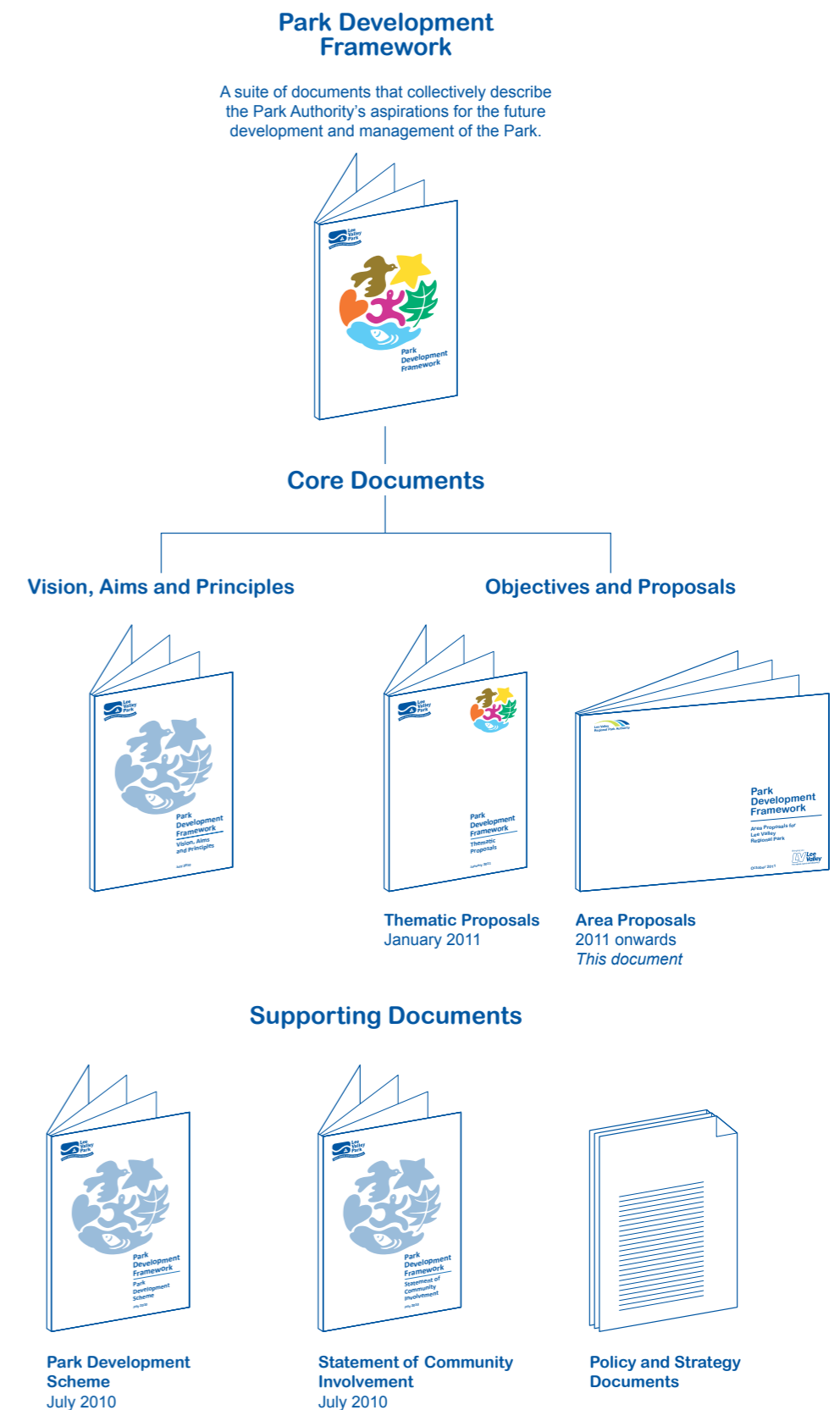
www.leevalleypark.org.uk/parkframework/home/

The *Park Development Framework* reflects our aspirations for the whole Park, and includes large areas of land over which we have no direct control. The framework documents therefore provide two functions: the strategic framework for our ongoing activities and guidance for others involved in the development and management of land within the Park.

The Authority is not a planning authority but it has a range of powers and duties in relation to the statutory planning process. Section 14(1) of the Park Act requires the Authority to prepare a plan setting out proposals for the future management and development of the Regional Park. Riparian planning authorities are under a mandatory obligation to include those parts of the plan affecting their areas within their own relevant planning strategies and policies (Section 14(2) of the Park Act) although inclusion does not infer that the planning authority necessarily agrees with them (Section 14 (2) (b)). 'For Area 5 the London Boroughs of Waltham Forest and Enfield and Epping Forest District Council are the relevant planning authorities.

Our current plan of proposals is the *Lee Valley Regional Park Plan* adopted in 2000 (Parts One and Two). *The Park Development Framework* will in time include proposals for all land within the Park, and will fully satisfy our duty to produce a plan of proposals as required under Section 14 of the Park Act. Once complete it will replace the *Park Plan 2000* Part Two. However the preparation and adoption of proposals will take time, so a phased replacement of the *Park Plan 2000* proposals is being implemented. Where proposals from the *Park Plan 2000* remain relevant, these will be incorporated into the Park Development Framework.

Accordingly both the *Park Plan 2000* and the *Park Development Framework* are relevant in terms of Section 14 (2) of the Park Act and are formal statements of the Authority's position in respect of development within the Regional Park. Once completed, the *Park Development Framework* will meet the requirements of Section 14 of the Park Act.

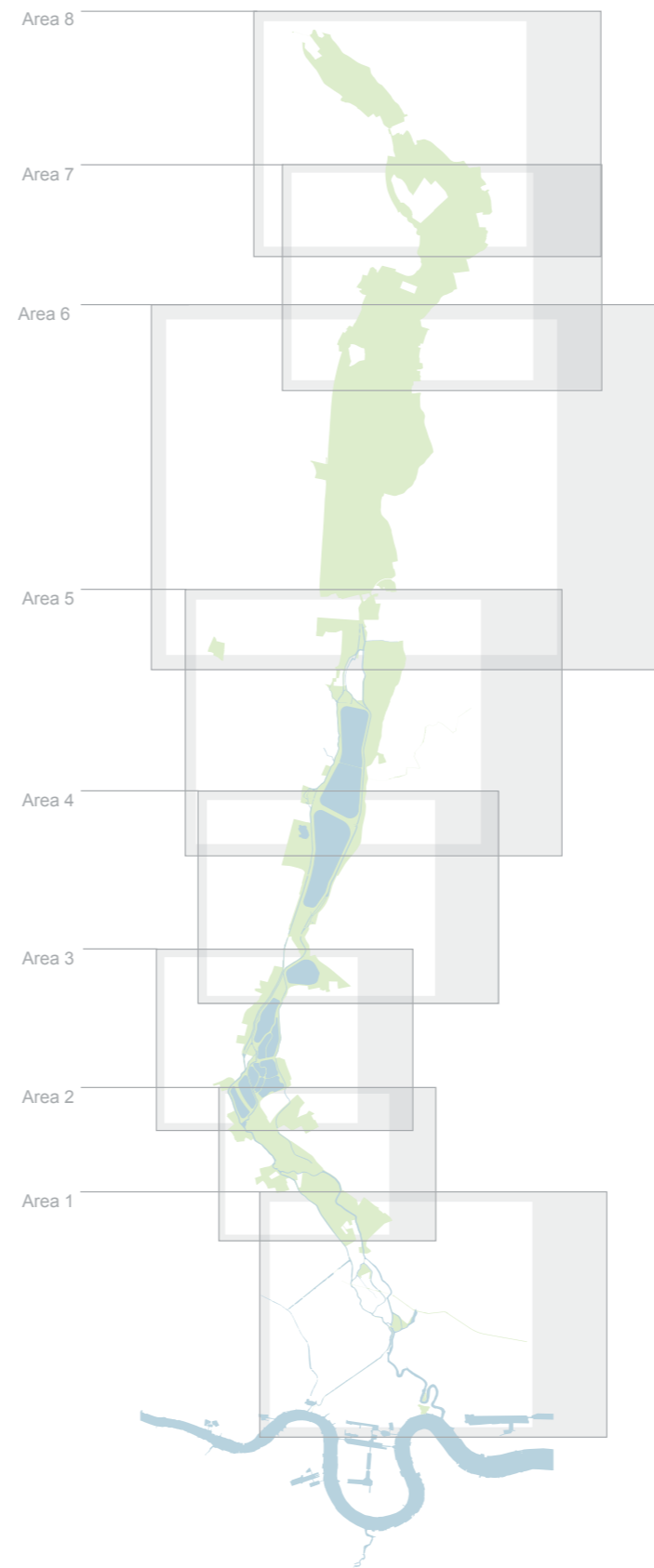


Area Proposals

The Authority is producing area proposals to provide greater detail on appropriate future use and development for the whole of the Park.

The Park has been divided into eight areas based on its current and potential visitor offer, the contribution that key resources such as open space, ecology and water make in creating leisure opportunities and the range of sporting and community activity that currently takes place within the Park.

The potential impact on the Park of major new development and investment in infrastructure is also a key factor in the consideration of proposals especially where the riparian planning authorities and major landowners are promoting plans for change.



Park Development Framework

Area 5 Proposals

The Waterlands:
King George V Reservoir
to Rammey Marsh

April 2013

Area 5 Proposals

The Waterlands: King George V Reservoir to Ramme Marsh

The focus for this document is Area 5 stretching between Ponders End and the King George V Reservoir in the south through to Ramme Marsh in the north which lies immediately south of the M25 motorway. It should be read alongside the *Authority's Vision Aims and Principles* document and the adopted *Thematic Proposals* both of which relate to the whole Regional Park area and which set the framework for the more detailed proposals presented here.

Context to Area 5 The Waterlands: King George V Reservoir to Ramme Marsh

Water remains a dominant feature of this section and the King George V Reservoir is a continuation of the water storage function of the Park in this part of the Lea Valley. In the north are large areas of open space and in the east a linear extension of the Park along Gilwell Lane connects the Park with Epping Forest.

Once again the water storage function of the Park has limited opportunities for leisure and recreation access in the southern part of this area, hence the importance of protecting and enhancing recreational open space resources and visitor facilities at Ramme Marsh and Gunpowder Park.

This section of the Lee Valley has a long and varied history. It contains the remains of settlements from prehistoric times, infrastructure serving the water industry and engineering works dating from the eighteenth and nineteenth centuries designed to reduce flooding. This varied and valuable history means that large areas of the Park are designated as Archaeological Priority Area/Zones and there are several local groupings of listed buildings and conservation areas. The Authority works with stakeholders to protect this unique heritage.

In contrast, the valley's location in the London-Stanstead-Cambridge growth corridor means that it is a focus for growth. Several sites within the North East Enfield Action Plan area including Ponders End have been identified as important development sites for housing and employment. A major challenge required by these proposals is to ensure that the development of these sites does not prejudice access and views of the Regional Park which creates its unique sense of place.



Area 5 Proposals - The Waterlands: King George V Reservoir to Ramme Marsh

Key Resources and Special Features

The open waters of the King George V Reservoir (173ha) anchor the southern part of this area whilst in the north large open green spaces dominate. The King George V Reservoir is designated as a Site of Special Scientific Interest (SSSI) and although public access is restricted the southern basin is used for sailing and both basins are used by bird watchers. This expanse of water makes the land along the eastern margins of particular importance for public access and recreation especially as a means of providing access into Gunpowder Park and connections through to Epping Forest in the east.

Gunpowder Park comprises 90ha and is established as a country park. The site lies on the eastern side of the Regional Park and access from the west is limited. The country park contains a wide range of landscapes, designed to celebrate the sites industrial heritage and to facilitate a range of recreational uses. The landscape also supports a variety of habitats which extend southwards into Sewardstone Marsh and along the eastern side of the reservoir.

To the west of Gunpowder Park lies Ramme Marsh a wide expanse of open space which rises gently in the north to meet the M25. The grassland habitat and Small River Lee which divides the East and West Marshes support a wide range of

species including rare orchids, water voles and invertebrates.

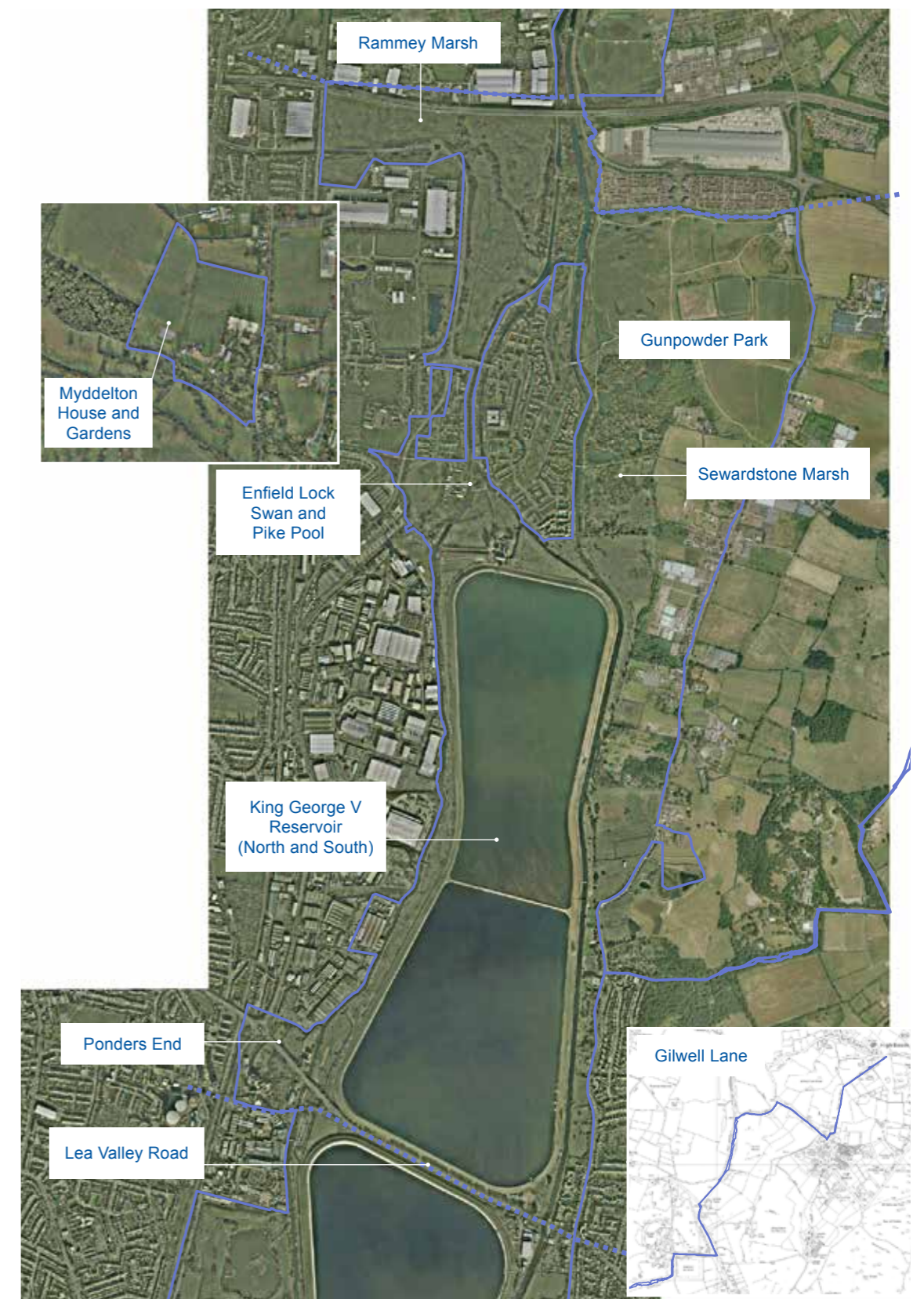
The King George V Reservoir, land adjoining and Ramme Marsh are designated as Sites of Metropolitan Importance for Nature Conservation (SMINC), Gunpowder Park within Epping Forest District is designated a Local Wildlife Site.

Both Ramme Marsh and Gunpowder Park are popular for informal recreational and nature conservation activities. Events and sporting activities are also held at Gunpowder Park including regular 'Fun Runs' and cyclo-cross. Public access between the sites is however difficult and proposals seek to improve connections across the River Lee Navigation to Ramme Marsh.

The River Lee Navigation and towpath provide an attractive connection through to the Enfield Lock Conservation Area, the secluded waterside site at Swan and Pike Pool and at the southern end of Area 5 to the water meadows and grassland habitats associated with the Wrights Flour Mills off Lee Valley Road. The Authority is working with the London Borough of Enfield to enhance existing ecological interest and educational resources on this site and open up the site to the public for recreation and to improve access to nature.

Although Myddelton House lies away from the main Parklands it represents an important heritage site with particular interest for visitors in the listed house and gardens. Recent investment in the site following the successful Heritage Lottery Funding bid have enhanced its appeal

The eastern side of the valley is dominated by its valley sides which rise to Barn Hill at 49m. This ridge provides a contrast to the Park's landscape which is dominated by the floodplain and provides great views across the whole valley.



© Crown Copyright and Database Rights 2013 Ordnance Survey 100019982.

Area 5 Proposals - The Waterlands: King George V Reservoir to Rammey Marsh

Opportunities for Visitor Enjoyment

The key to unlocking potential within the northern part of this area lies in improving existing and creating new access links into and between sites such as Gunpowder Park and Rammey Marsh which connect to the River Lee Country Park to the north. The provision of the Lee Valley Pathway on the eastern side of the Park will link together sites behind Sewardstone Road providing direct access from the campsite connecting with Gilwell Lane and other routes into Epping Forest. The waterways are also a key resource for visitors and connections from west to east between the towpath and the Lee Valley Pathway will be strengthened.

Gunpowder Park, Rammey Marsh and smaller sites such as Swan and Pike Pool and Ponders End offer the visitor a rich nature and heritage experience, and have the potential to accommodate a range of other active recreational and educational activities.

Visitor facilities at Myddelton House have been greatly enhanced over the last few years and there is scope to invest further in this key visitor node. Proposals are focused on opening up more of the site to visitors, showcasing the growing of heritage plant varieties in the gardens and best practice in sustainable gardening.

At the sailing club on the King George V Reservoir there are opportunities to enhance the water sports offer, and on the south western edge of the reservoir consider options for improving public access and recreational use of land adjoining Ponders End.

Adopted Principles Guiding these Proposals

The Authority's proposals for each of these areas are designed to address the issues identified above and are based on the Authority's adopted (July 2010) guiding principles for the future development and management of the Regional Park. These are:

- **Partnership work** – recognising that many of the proposals can only be delivered through the collective efforts of a range of partners, stakeholders and landowners.
- **Regional Value** – assessing the range of benefits that any particular facility or activity within the Park delivers to the people of Essex, Hertfordshire and London.
- **Multi-function and synergy** – developing proposals which can be used to harness competing demands.
- **Flexibility** – the design and management of facilities and open spaces of the Park in a way which responds to changing needs and demands
- **Environmental Sustainability** – recognising that the ongoing planning, design and management of the Park must be underpinned by principles of sustainable management and development and take full account of the need to mitigate and adapt to impacts of climate change.
- **Engagement** – engagement with a wide range of organisations, user groups and community groups is fundamental to the successful management and development of the Park.

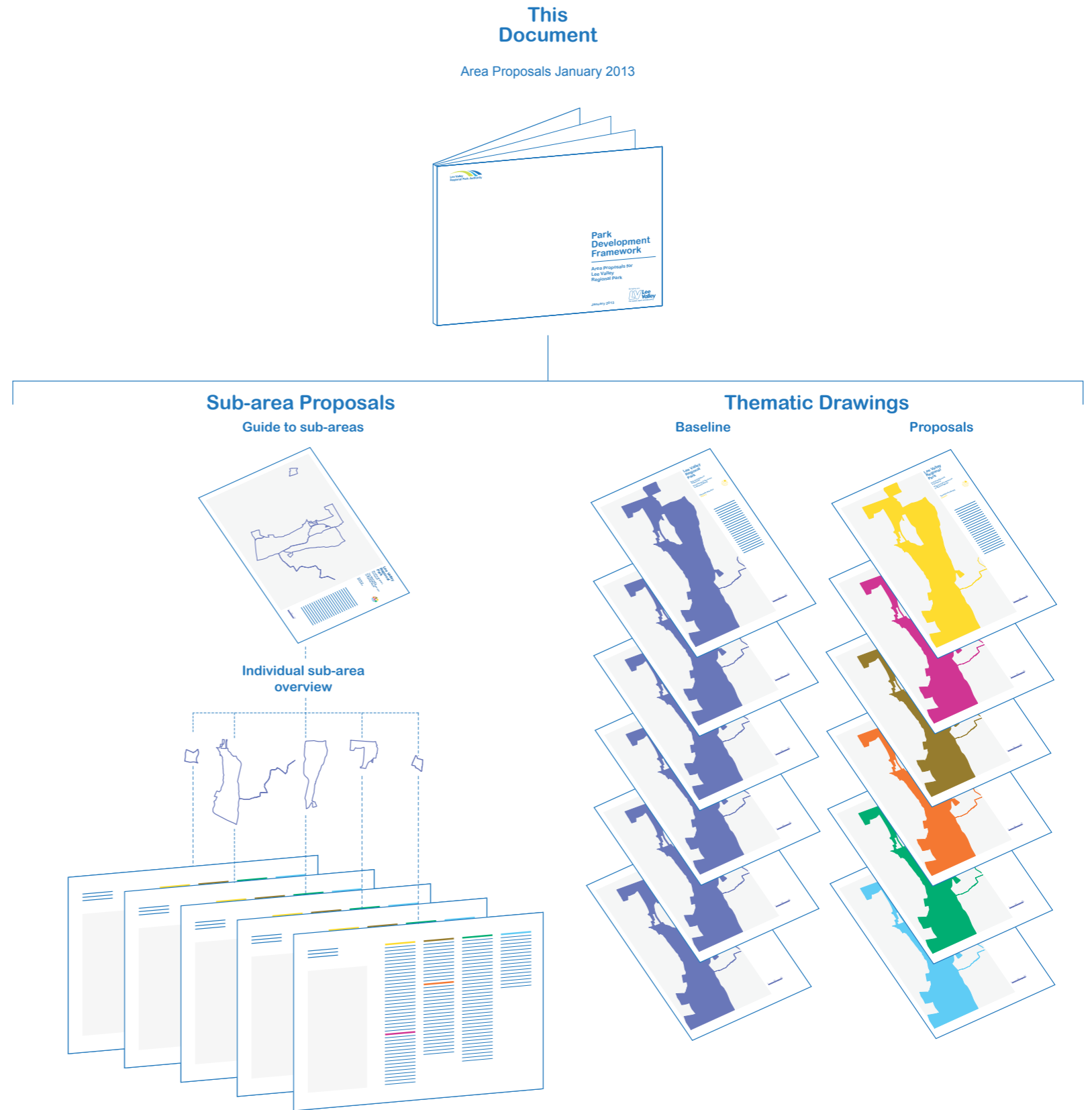
This Document

Area 5 has been divided into five sub-areas 5.A.1 to 5.A.5 and these sub divisions are shown on the map *Guide to Sub-areas* page 13.

The sub divisions largely reflect existing and potential visitor use and landownership, current and future management and important national and local designations e.g. King George V Reservoir SSSI.

The Park wide Adopted Thematic Proposals have been translated onto six area based maps, one representing each theme. These provide a graphical interpretation of the relevant area wide proposals as they apply within Area 5. These should be read alongside the sub-area proposals.

Incorporated within these Area 5 Proposals are those proposals from the Park Plan Part Two which are still considered to be relevant. Proposals have also drawn upon and been informed by other relevant studies that the Authority has commissioned with partners including the Upper Lee Valley Landscape Strategy.



Consolidated proposals by sub-area

Area 5 Proposals

The Waterlands:
King George V Reservoir
to Rammey Marsh

Lee Valley Regional Park

Park Development Framework

The Waterlands: King George V Reservoir to Ramney Marsh

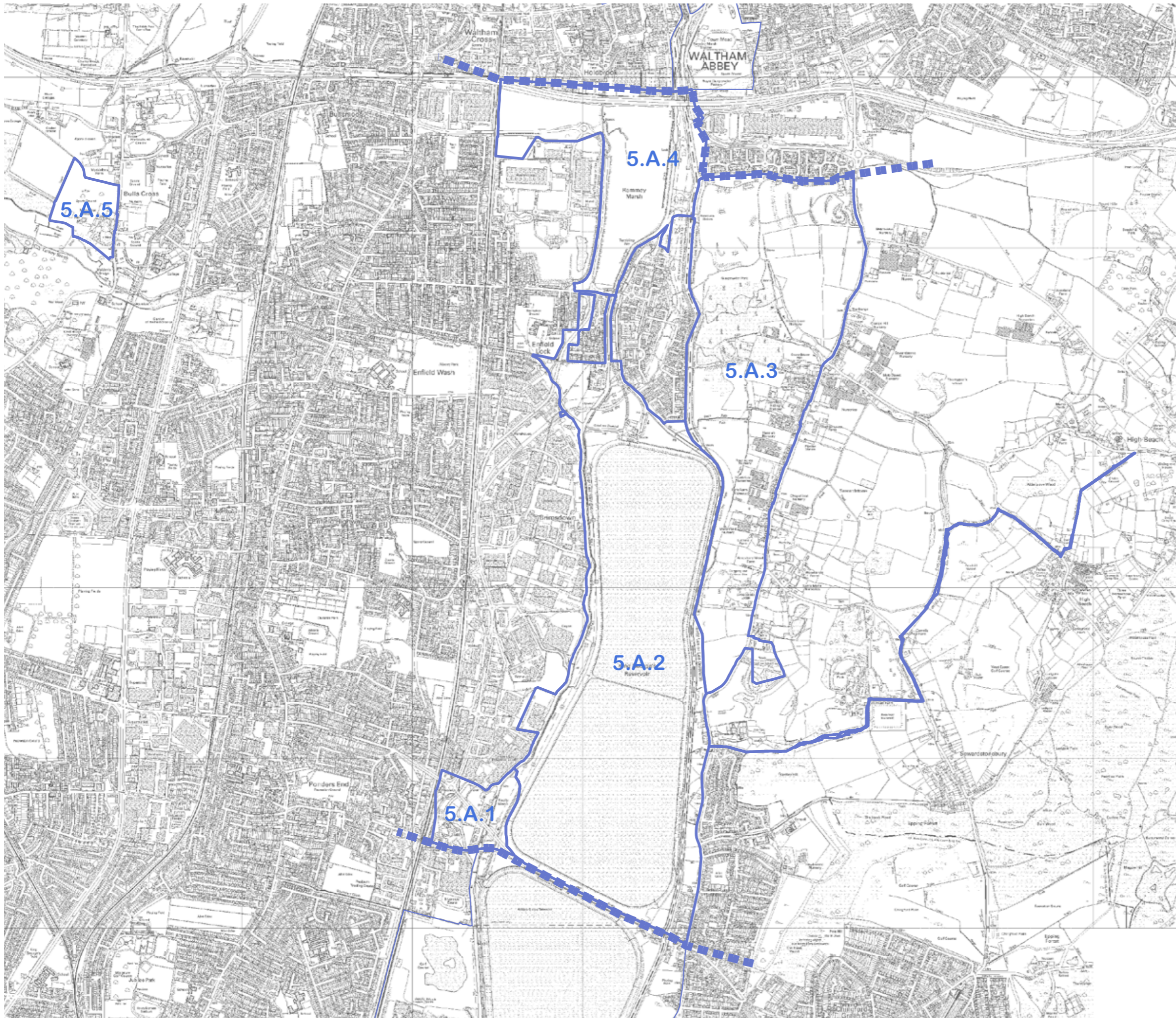
Guide to Sub-areas

To be read in conjunction with the Area 5 Proposals Thematic Drawings



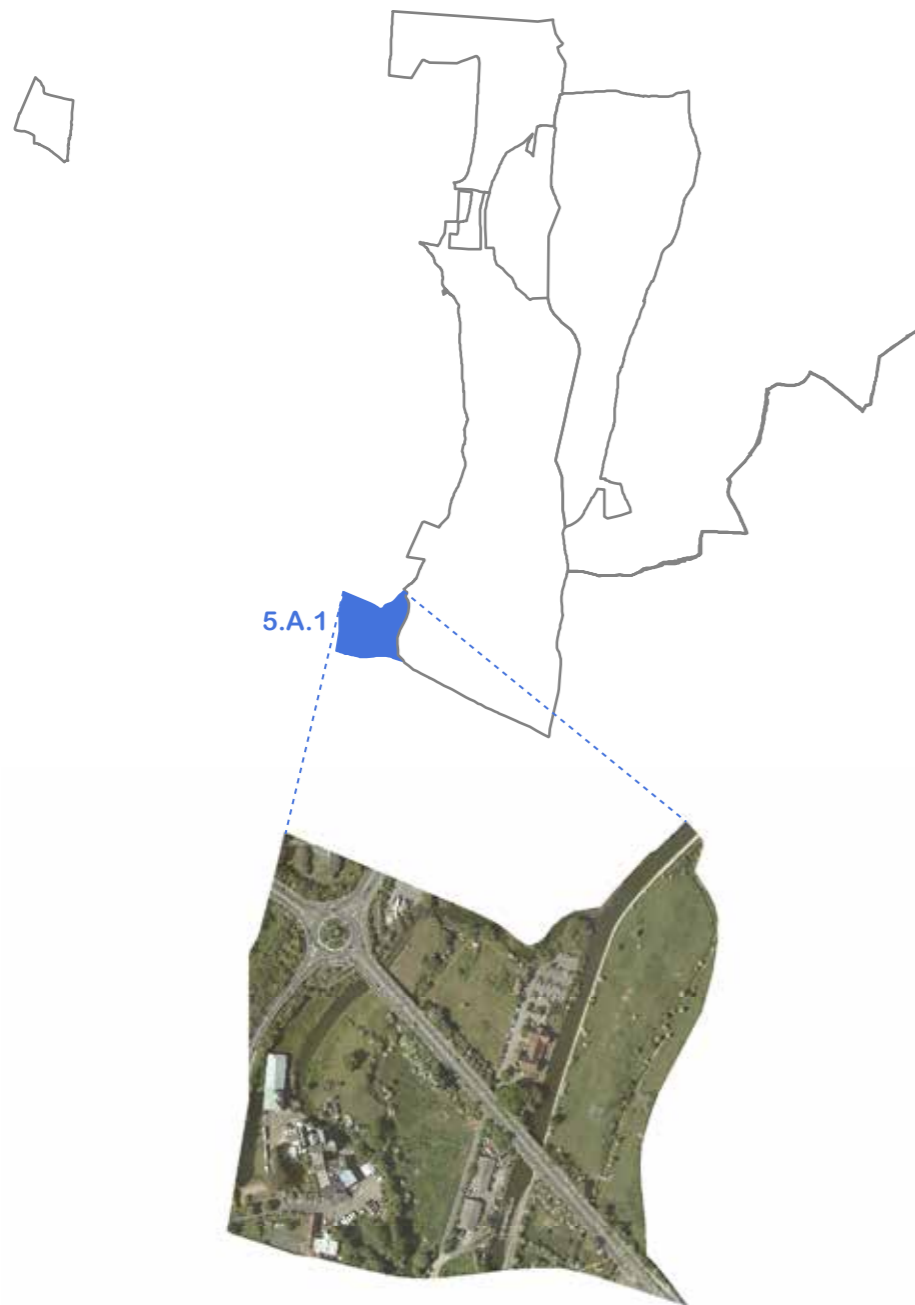
Areas

- 5.A.1 Ponders End and Lea Valley Road
- 5.A.2 Enfield Lock, King George Reservoir and Margins
- 5.A.3 Gunpowder Park and Sewardstone
- 5.A.4 Ramney Marsh East and West
- 5.A.5 Myddelton House and Gardens



1:22,000 @A3

5.A.1 Ponders End and Lea Valley Road



Visitors

Work with the London Borough of Enfield, Thames Water and other stakeholders to deliver waterside visitor facilities as part of the Ponders End Waterfront development and establish the area as a visitor hub. Explore opportunities to expand the range of visitor facilities based around the Navigation Inn with the refurbishment of adjacent vacant buildings.

Support the provision of new pedestrian access into the area with well designed signage to attract visitors from Lea Valley Road, and from residential and business communities to the west. Support improvements to the Lea Valley Road underpass.

Opportunities for cycle hire facilities to be pursued.

On the Lea Valley Road, gateway features at either end to be combined with traffic calming, the setting back of fencing and the creation of broad pedestrian boulevards to be linked to the Lea Valley Walk and the Pathway Corridor.

Sport and Recreation

Support proposals for increasing the recreational use of the waterways including canoe hire and associated public facilities. Opportunities for angling and hire of fishing equipment to be explored.

Design new public open spaces for informal recreational use.

Biodiversity

Support river restoration and wildlife habitat creation on land south of Lea Valley Road and on the existing water meadows to establish improved wetland habitat and new wildlife pond and

support habitat provision for water vole. Habitat creation to support ecological connectivity along the Lee Navigation south through to Ponders End Lake. Improve existing grassland with introduction of native wild flower meadow species.

Work with stakeholders to provide an outdoor classroom, new footpath and nature trails on land south of the road.

Community

Explore with the London Borough of Enfield the proposal for a City Farm on land north of Lea Valley Road and its potential to build on and link into the existing small scale grazing initiative operating on land between the waterways of the River Lea or Lee. The City Farm to be developed to support learning opportunities for school children.

Landscape and Heritage

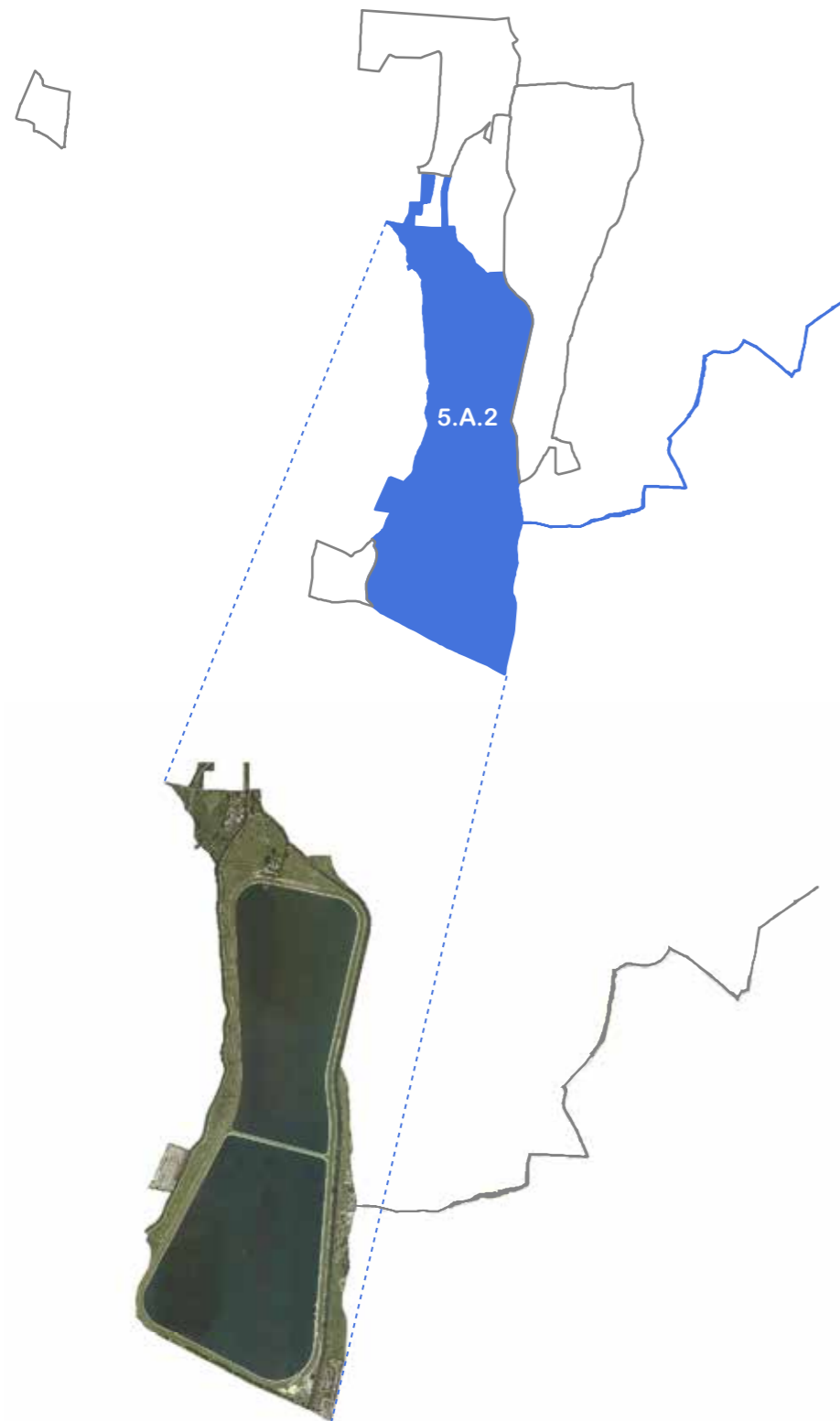
Landscape character to be improved and strengthened through habitat creation and restoration, screening of roads in particular the unattractive and harsh edge created by Wharf Road and Mollison Avenue/Meridian Way and improvements to Lea Valley Road including structure planting.

Support the protection and maintenance of buildings of heritage value. The heritage value of the listed flour mill and its setting to be preserved. The openness of the adjoining water meadows, pond and water channels to be protected and restored as a tranquil riverside wildlife habitat with controlled access for informal recreation and nature study.

Environment

Work with the Environment Agency and other stakeholders to restore water and overflow channels and enhance water quality.

5.A.2 Enfield Lock, King George V Reservoir and margins



Visitors

Water recreation and waterside activities along the towpath to continue to be developed with visitor facilities enhanced at the existing focal points around Enfield Lock and Swan and Pike Pool.

Existing east west pedestrian and cycle links to be protected and enhanced as they pass between the Enfield Lock area and Gunpowder Park and Sewardstone area. Pedestrian links connecting residential and employment areas into the Park along its western boundary to be improved and clearly signed. Support access improvements alongside Turkey Brook and Mossups Creek that connect through to the Park and the Lee Valley Walk.

Sport and Recreation

Recreational and sporting use of open spaces adjacent to Mollison Avenue to be supported

The open character and nature conservation value of land south of Swan and Pike Pool to be protected and enhanced for informal recreation

Work with Thames Water, the King George V Sailing Club and other stakeholders to improve and diversify existing watersports provision and activities on the South Basin, including new built facilities incorporating teaching and social activities. Any built facilities and new activities would need to be located and operated without detriment to the reservoirs designation as an SSSI, its green belt designation and take account of Thames Water's operational and safety requirements.

Biodiversity

King George V Reservoir to be protected as a nationally important wintering, moulting and feeding site for waterbirds. Support Thames Water's management of the site to improve the reservoirs existing state from 'unfavourable recovering' to 'favourable' as required by Natural England.

Explore options for the installation of a viewing tower hide positioned on land adjoining the north east corner of the reservoir embankment to aid bird watching and provide views across the reservoir.

Habitat improvements to be encouraged along reservoir embankments, for example through the planting of species rich grassland that supports a wide variety of invertebrates and birds and that meet Thames Water's operational and safety requirements.

Community

Explore opportunities to expand and develop volunteer activities linked to the ecological and waterside heritage interests.

Landscape and Heritage

Work with stakeholders to invest in landscape improvements and land management to improve areas of fragmented landscape character adjacent to the reservoir, and soften harsh visually detracting edges to the Park adjacent to industrial areas along its western boundary.

Open space adjacent to Mollison Avenue to be protected and enhanced to establish both a positive entrance into the Regional Park and a north-south link to the rest of the Park.

Waterway heritage features and buildings to be conserved and enhanced as an integral part of continuing environmental and access improvements.

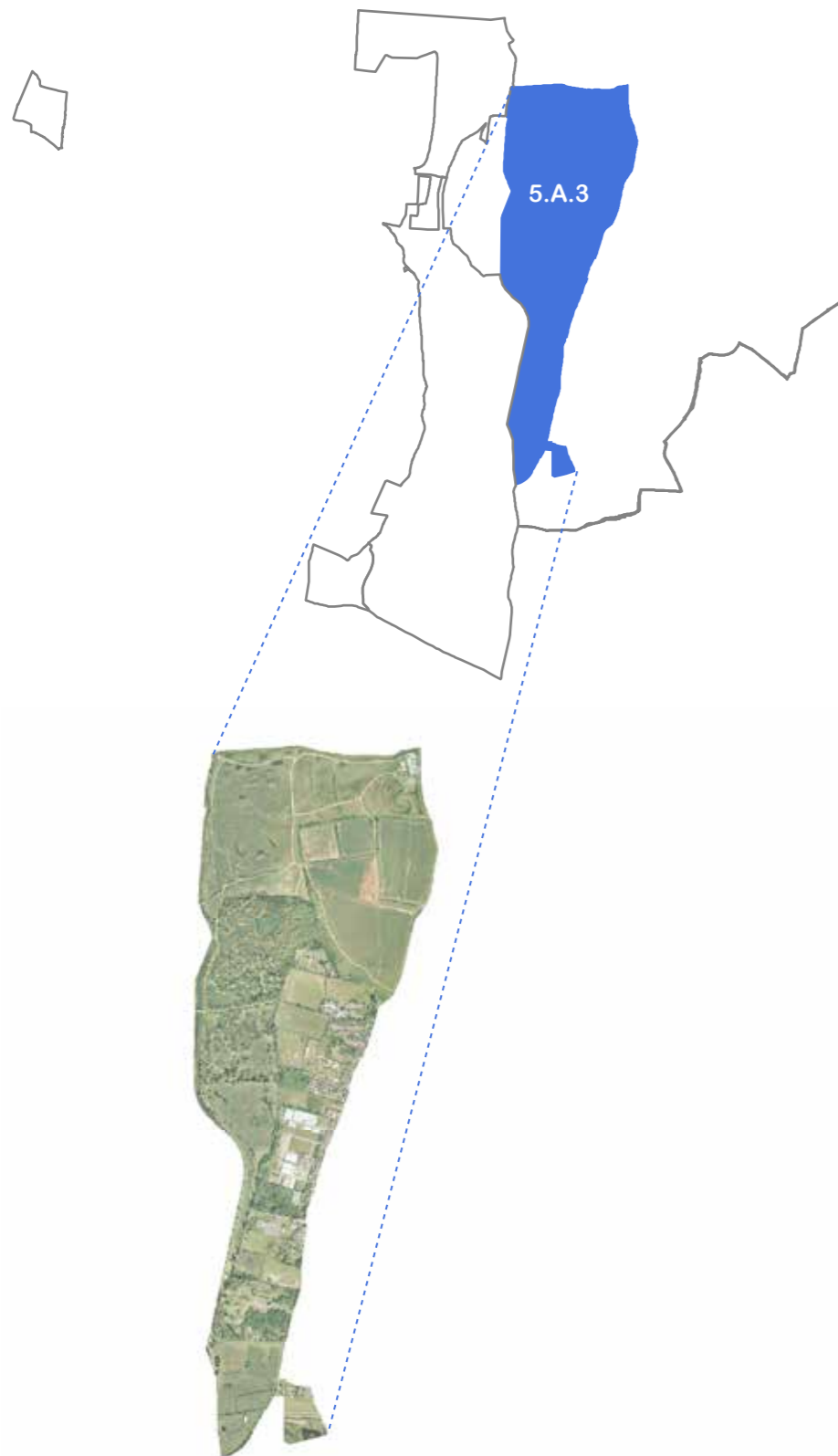
Environment

Recognise operational needs of Thames Water to access land for operational and investment purposes.

Support ongoing improvements to water quality to enhance ecological conditions and recreational use of the water and waterside open space.

Explore with stakeholders the feasibility of using the River Lee Navigation for water transport, alongside its recreational role and taking account of its ecological value.

5.A.3 Gunpowder Park & Sewardstone



Visitors

Enhance current visitor facilities at Gunpowder Park to create a visitor hub and provide the core range of services including refreshment facilities, an indoor public visitor space and Park information point. Facilities should be of a flexible design to cater for both the informal visitor and those participating in events and organized activities.

Work with stakeholders to improve signage and the promotion of pedestrian links into Gunpowder Park from Enfield Island.

Promote and continue improving visitor accommodation at the Lee Valley Campsite Sewardstone under a phased programme of enhancement and development of new facilities, for example camping pods and cabins.

Work with local bus operators to improve bus services to Gunpowder Park, linking to other visitor facilities further to the south for example the Lee Valley Campsite.

Work with stakeholders to deliver a shared pedestrian and cycle route through the various open spaces east of the King George V Reservoir as a continuation of the Lee Valley Pathway, the National Cycle Network Route 1 which passes through Gunpowder Park.

Connections between the existing and future sections of the Lee Valley Pathway and public footpaths, including the London Outer Orbital Path to be protected and enhanced to strengthen links through to both the western and eastern sides of the Regional Park. Connections with paths and bridleways outside the Regional Park to be protected and promoted. Access into sensitive wildlife areas to be designed to avoid disturbance to habitats.

Explore opportunities to create an information and viewing point over the Park from the hill top which lies

within farm land at Picks Farm west of Sewardstone Road.

Gilwell Lane to be maintained and promoted as a bridle path and connecting route between the Regional Park and Epping Forest

Sport and Recreation

Encourage informal recreation and sporting activities such as walking, running, cycling, angling, horse riding and nature study throughout the area by the improvement of existing and the provision of new facilities

Use of Gunpowder Park for running and cycle-cross training and events to be supported providing these are operated with regard to the on site nature conservation interest.

Biodiversity

Gunpowder Park, Sewardstone Marsh and Patty Pool Mead to be managed and enhanced as a key access to nature site. Habitat improvements to be undertaken throughout.

Existing wet woodland habitats at Osier Marsh and Sewardstone Marsh to be managed to maintain and expand their special wildlife interest. Enhance visitor access by extending boardwalks and improving interpretation. Management of farmland to include plant mixes that target specific wildlife groups for example invertebrates and birds. Floodplain grassland and fen habitat to be enhanced on Sewardstone Marsh and the wet grassland habitat of Patty Pool Mead to be improved to provide nesting opportunities for breeding waders.

New nature trail to be incorporated into the Pathway route as it runs south through land east of the King George V Reservoir, including a trail link into the Sewardstone campsite.

Community

Develop the use of existing paths and spaces for informal training (time trials over marked distances for example) and healthy walking through the introduction of signage at key points and promotional information.

Support events, arts and community learning activities at Gunpowder Park within the events site and where disturbance to wildlife and habitats can be minimised.

Landscape and Heritage

The open character and rural valley setting of this area to be safeguarded and the existing agricultural, grassland, wetland, and woodland habitats to be protected and managed to improve ecological diversity and interest. The reinstatement of hedges and the creation and enhancement of woodlands to be undertaken where this will strengthen landscape character.

Extensive views out over the Regional Park from Sewardstone Road and views from the hill top panorama which lies within farm land west of Sewardstone Road to be protected. Views of the rural valley sides to the east to be safeguarded with improvements sought to enhance their landscape quality. The importance of the Rural Valley Sides as a component of the landscape character of the Park to be protected from further encroachment.

Work with stakeholders to protect, enhance and celebrate heritage within this area of the Park. Opportunities for a heritage themed trail within this area and joint promotional activity to be explored, for example linking Gunpowder Park with the Enfield Lock Conservation Area, heritage resources on Enfield Island and heritage attractions to the north at Waltham Abbey and Gunpowder Mills.

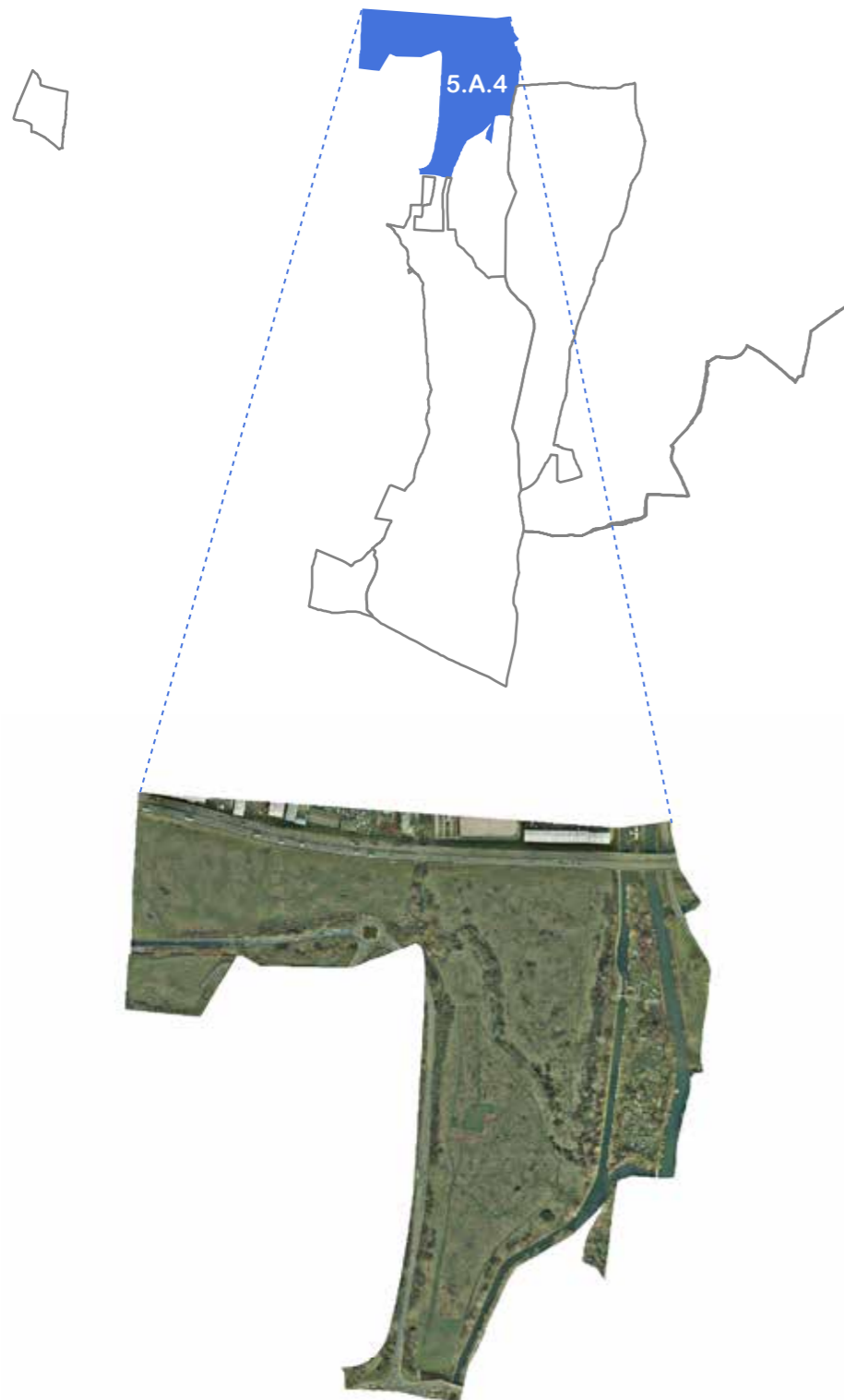
Environment

Support sustainable management of land at Gunpowder Park as part of the Authority's farm operations and to benefit wildlife within the wider area.

The Authority will resist further infill on underused sites within the Regional Park. These sites should be returned to Park related use.

Sites in horticultural and agricultural use that lie between the reservoirs and Sewardstone Road to be enhanced with careful screening of the potentially negative impacts of buildings and other features. In the longer term, structures and uses which have a detrimental impact on recreational use, the openness of the area and on views across the valley to be removed, including through the use of the Authority's land purchasing powers if necessary.

5.A.4 Rammey Marsh East & West



Visitors

Maintain and enhance existing pedestrian and cycle routes, both those providing local connections and those forming part of Park-wide strategic routes. Highlight and promote circular routes.

Options for new and/or reinstatement of pedestrian bridge links over the Rammey Marsh Flood Relief Channel and Lee Navigation to be considered to open up public access between Rammey Marsh and Gunpowder Park to the east.

Work with the Canal and River Trust and other stakeholders to enhance the towpath under the M25 as a key link between Rammey Marsh and Town Mead. Options to include a lighting, planting and an art scheme.

Sport and Recreation

Explore opportunities with stakeholders for the provision of recreation and leisure facilities on Rammey Marsh West, for example a BMX facility. Informal recreational use to be supported and encouraged across both Rammey Marsh East and West, co-ordinated with measures to create habitats and improve access to nature.

Biodiversity

Enhance and promote Rammey Marsh East as an access to nature site. Undertake habitat improvements throughout in association with sensitively designed and located public access.

Rammey Marsh East to be managed as a site of special biodiversity interest focused on habitat enhancement for invertebrates, water voles and orchids. This will include grassland restoration, scrub removal, ditch management, and enhancement of the Small River Lea. Grazing on Rammey Marsh west to be controlled with

habitat management to encourage wildflowers. Land between the Rammey Marsh Flood Relief Channel and River Lee Navigation to be enhanced for wildlife and the ecological value of the waterways protected.

Community

Local events use and activities on Rammey Marsh to be supported. Opportunities for increased volunteer activity and educational use of Rammey Marsh to be explored.

Explore options for a large scale art installation adjacent to the M25 to promote and celebrate the Regional Park

Landscape and Heritage

The open and green character of the area as a whole to be protected and views into the Park and out to the east safeguarded. Landscape quality throughout to be improved with a focus on investment to enhance and integrate poor quality and degraded landscape south of the M25 in order to establish a more attractive character and visual structure to the land. All landscape works to conserve and enhance habitats of special interest and support sympathetic habitat creation and management.

Work with stakeholders to achieve the integration and enhancement of open space south of Mollison Avenue, and improvements to the edges of the Marsh with the screening of intrusive structures such as road and rail routes, industrial and development sites to the west and south.

Environment

Opportunities for commercial honey production with installation of bee hives on the Marsh to be explored.

Undertake further work with the Environment Agency to improve conditions on the Small River Lea.

Work with the Canal and River Trust to ensure established moorings at Rammey Marsh Lock are well maintained and accessible to recreational boaters.

5.A.5 Myddelton House & Gardens



Visitors

Investment in Myddelton House and Gardens as a key visitor node to continue focused on restoring the historic gardens and maintaining and enhancing visitor access throughout.

Investigate the potential to restore the remaining stable block buildings as part of the existing Myddelton House visitor attraction. Expansion of the visitor centre and museum, café and a shop are potential options.

The gardens to continue to be managed in the “ethos” of E. A. Bowles allowing further developments to take place, horticultural experimentation to continue and the management plans to be adapted to any changes in climate, economics or visitor requirements.

Sport and Recreation

Ensure sports development and training on land of the Tottenham Hotspur Academy supports broader community development goals, including education and health.

Biodiversity

Adopt management techniques which will conserve and enhance the range and diversity of habitats, respecting the design intentions of the historic landscape features. Prioritise areas where there is known continuity of habitat and therefore significance in relation to the designed landscape. For example, ancient trees, hedgerows, ditches and pasture.

Provide habitats for specific species e.g. stag beetles, some birds, pond invertebrates, where these can be accommodated within the overall management strategy.

Community

Support increased volunteer activity within Myddelton House Gardens and the development of skills and learning opportunities. Work with local interest groups on future management and enhancement of the site.

Work closely with the Spurs Community Foundation to explore opportunities for the funding of volunteer/gardening apprenticeships based at Myddelton House Gardens.

Landscape and Heritage

Restoration of the grade II registered landscape, and historic garden, associated buildings, artefacts and horticultural structures to continue in accordance with the Conservation Management Plan.

Work with the Forty Hall estate to restore the bridges and re-open paths to connect Myddelton House to the wider landscape.

Environment

Explore with stakeholders options and best practice for water conservation and use, measures to deal with the impact of climate change and any activities required to support the future sustainability of the gardens

Continue to manage the kitchen garden for the public and as a demonstration of growing heritage varieties, undertaking experimentation and realizing the historical significance of the kitchen garden.

Thematic Drawings

Area 5 Proposals

The Waterlands:
King George V Reservoir
to Rammey Marsh

Lee Valley Regional Park

Park Development Framework

The Waterlands: King George V Reservoir to Ramney Marsh

To be read in conjunction with the Area 5 Proposals Consolidated proposals by sub-area.

Thematic Baseline

Visitors

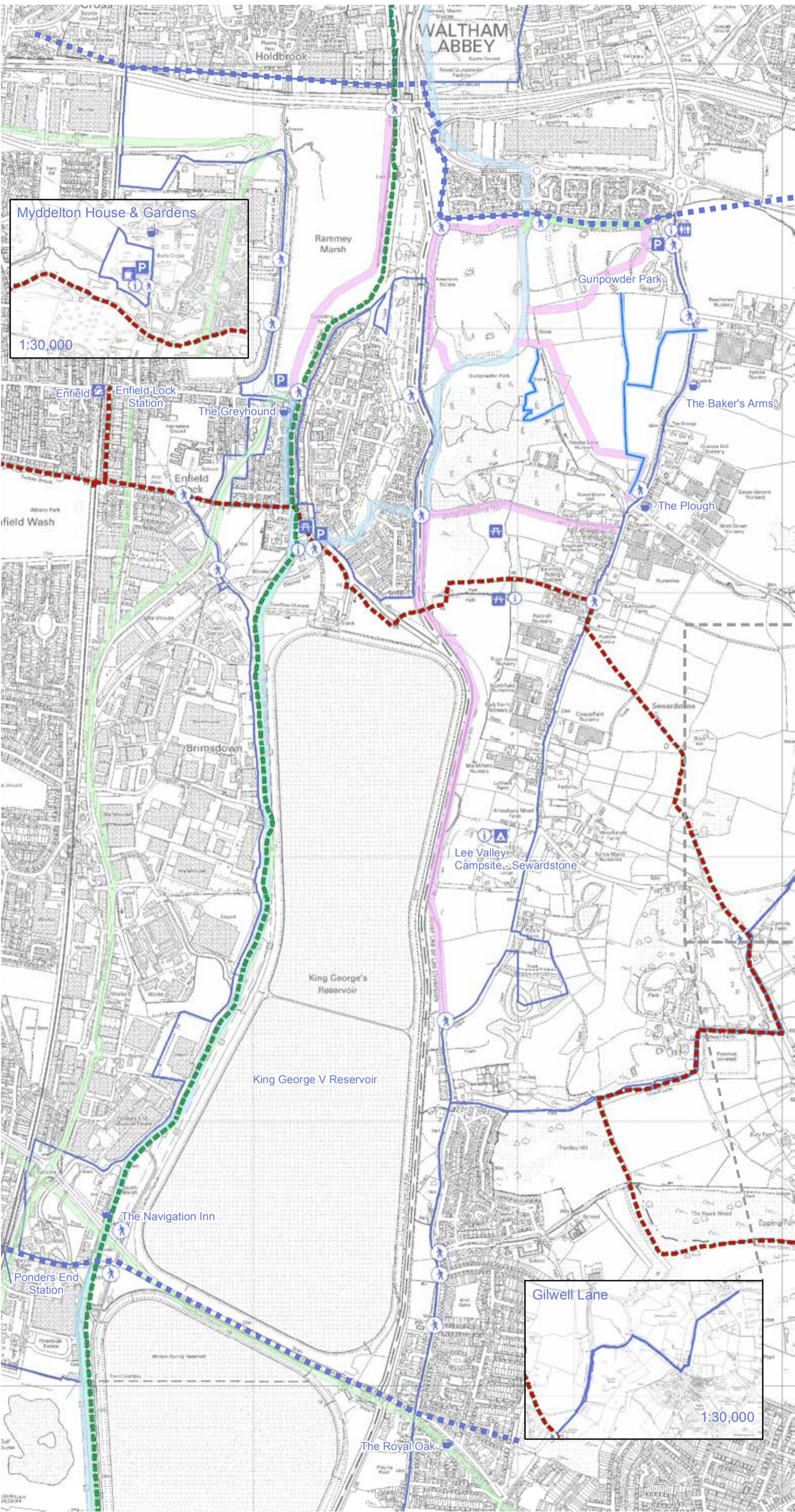


Baseline Information

- Access to Park**
- Pedestrian Access to Park

- Visitors Facilities**
- Picnic Sites
 - Car Park
 - Public Houses
 - Cafes
 - Camping and Caravanning
 - Public Toilets
 - Town Centre/Shops
 - Information Point

- Routes**
- Lea Valley Walk
 - London Loop
 - Cycle Route
 - National Cycle Network Link
 - National Cycle Network Route
 - Public Footpaths
 - Extent of Proposal Area 5
 - LVRPA Boundary



1:15,000 @A3

Lee Valley Regional Park

Park Development Framework

The Waterlands: King George V Reservoir to Ramney Marsh

To be read in conjunction with the Area 5 Proposals Consolidated proposals by sub-area.

Thematic Proposal

Visitors



Identity & Brand

- i Information Signs to Visually link with Flour Mills
- s Improve Signage Within Enfield Island to Guide Visitors into the Park
- ↔ Enhance & Promote Links

Access for All

- - - 3-Way Pedestrian Bridge
- - - Proposed Foot & Cycle Bridge
- Gated Ramp Access

Routes

- Ⓜ Foot & Cycle Paths to Improve Access into Ponders End Site
- - - Lea Valley Walk
- - - Lee Valley Pathway & National Cycle Network Link
- - - Proposed Path Extension & Boardwalk
- Small Lea Path Connecting To Turkey Brook Path
- - - Foot & Cycle Path
- - - National Cycle Network Route

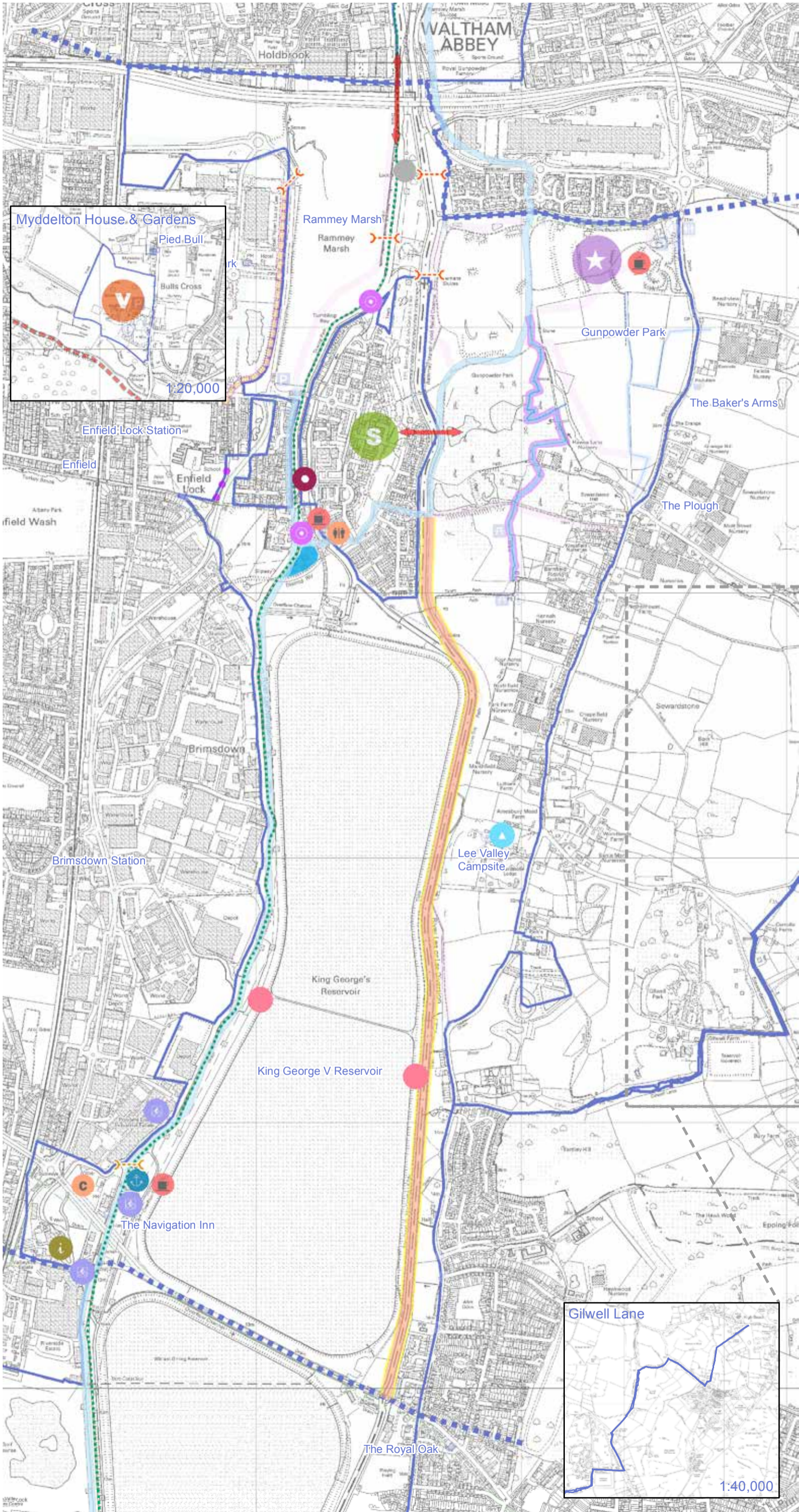
Visitor Facilities

- ★ Enhanced Visitor Hub at Gunpowder Park
- v Enhance Visitor Facilities
- ▲ Enhance Visitor Accommodation at Lee Valley Campsite
- Improve Recreational Moorings
- ⚓ Marina
- Small Scale Public Facilities e.g. signage, seating, toilets
- Public Space Enhancing Visibility of Royal Small Arms Factory
- ☕ Cafe
- c City Farm
- ♿ Public Toilets
- Public Space Improvements & Viewing Tower

- - - Extent of Proposal Area 5
- ▭ LVRPA Boundary



1:15,000@A3



Lee Valley Regional Park

Park Development Framework

The Waterlands: King George V Reservoir to Ramme Marsh

To be read in conjunction with the Area 5 Proposals Consolidated proposals by sub-area.

Thematic Baseline Sport and Recreation



Baseline Information

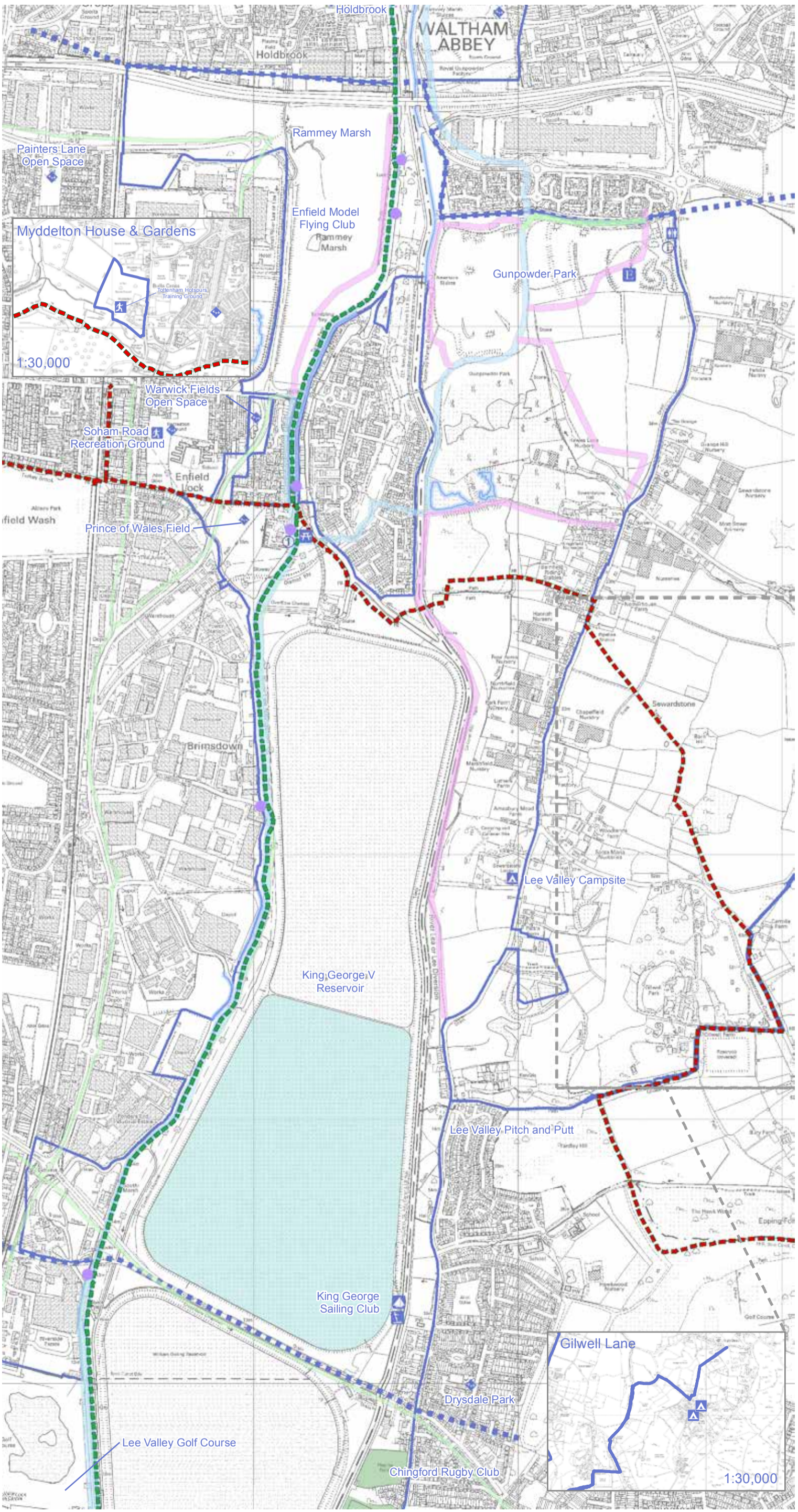
Recreation & Leisure

- Running & Cycling Events Location
- Picnic Site
- Camping & Caravan Site
- Playground
- Information Point
- Activity Point
- Mooring
- Sailing
- Public Toilets
- Water Sports Club
- Angling Sites
- Sailing Club Lake

Routes

- London Loop
- Lea Valley Walk
- National Cycle Network Route
- National Cycle Network Link
- Cycle Route

- LVRPA Boundary
- Extent of Proposal Area 5



1:15,000@A3

Lee Valley Regional Park

Park Development Framework

The Waterlands: King George V Reservoir to Ramney Marsh

To be read in conjunction with the Area 5 Proposals Consolidated proposals by sub-area.

Thematic Proposals

Sport and Recreation



Land Based Recreation & Leisure

- R Enhance Informal Recreation & Sporting Opportunities within Gunpowder Park
- O Intensify Usage Of Open Space (Mini Golf/ Picnic Site/Adventure Playground) Recreational use of Space Adjoining the Reservoir in the South West Corner
- Opportunity Site for Land Based Recreation & Leisure (e.g. BMX)
- - - Lea Valley Walk
- Lee Valley Pathway
- National Cycle Network Link
- National Cycle Network Route

Water Based Recreation & Leisure

- H Hire Centre (Canoe/Cycle/Fishing Equipment)
- Improve Recreational Moorings
- ★ King George's Sailing Club - Development of New Sailing & Water Sports Facilities, Sailing to Continue on South Basin
- ⊕ Ponders End Island Boat Marina (Open Land to East of River Lee to Public Access)
- Flat Water Canoe Trail
- Sailing

Sports Development

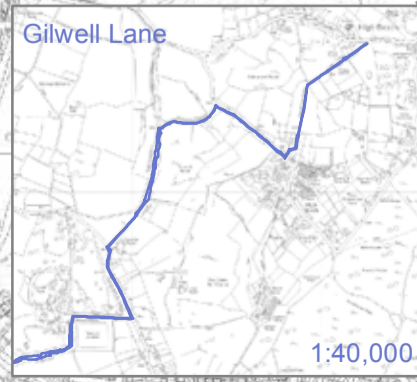
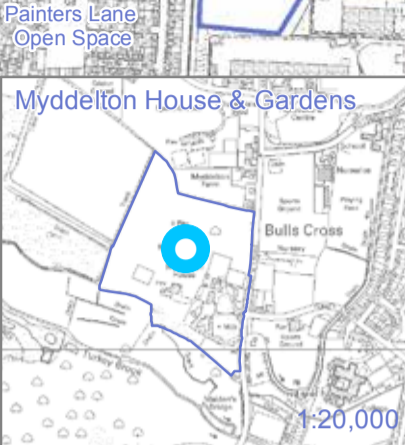
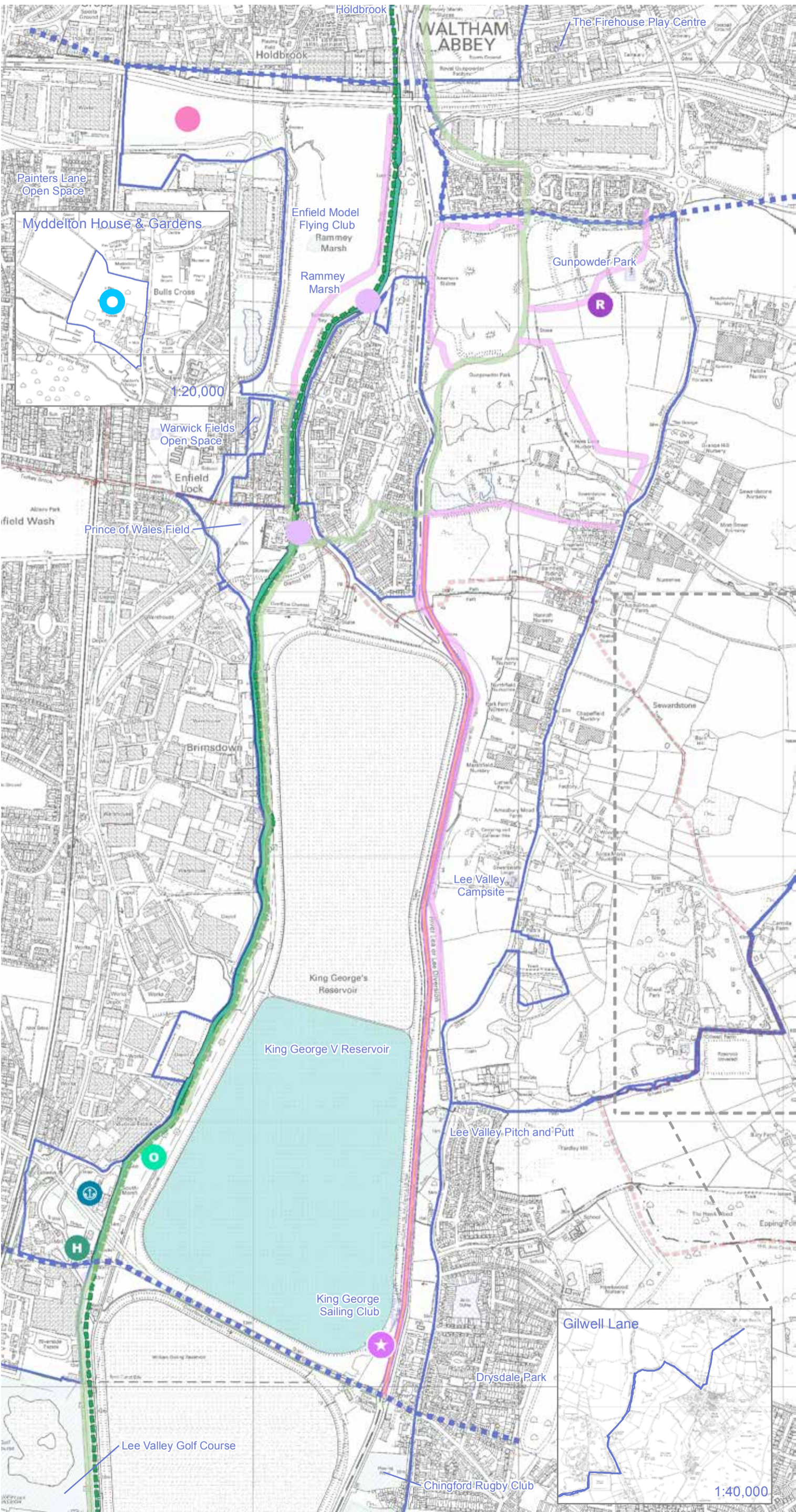
- O Sports Development & Training on land of Tottenham Hotspurs Academy to Support Broader Community Development, Education & Health Goals

- LVRPA Boundary
- Extent of Proposal Area 5



1:15,000@A3

Crown Copyright and Database Rights 2013
Ordnance Survey 100019982.



Lee Valley Regional Park

Park Development Framework

The Waterlands: King George V Reservoir to Ramme Marsh

To be read in conjunction with the Area 5 Proposals Consolidated proposals by sub-area.

Thematic Baseline

Biodiversity



Baseline Information

Flora and Fauna

- Bat Hibernacula
- Bird Hide
- Special Areas of Conservation
- Sites of Special Scientific Interest

Local Designations

- GLA Area of Metropolitan Importance
- GLA Area of Local Importance
- GLA Borough Importance Site (Grade 2)

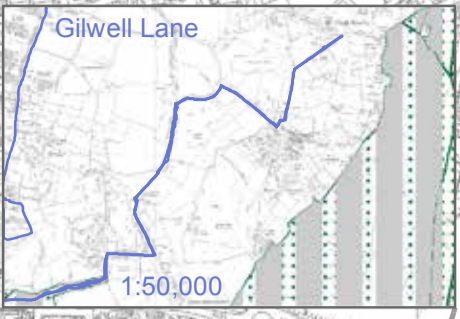
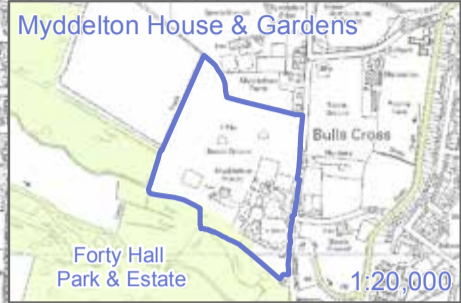
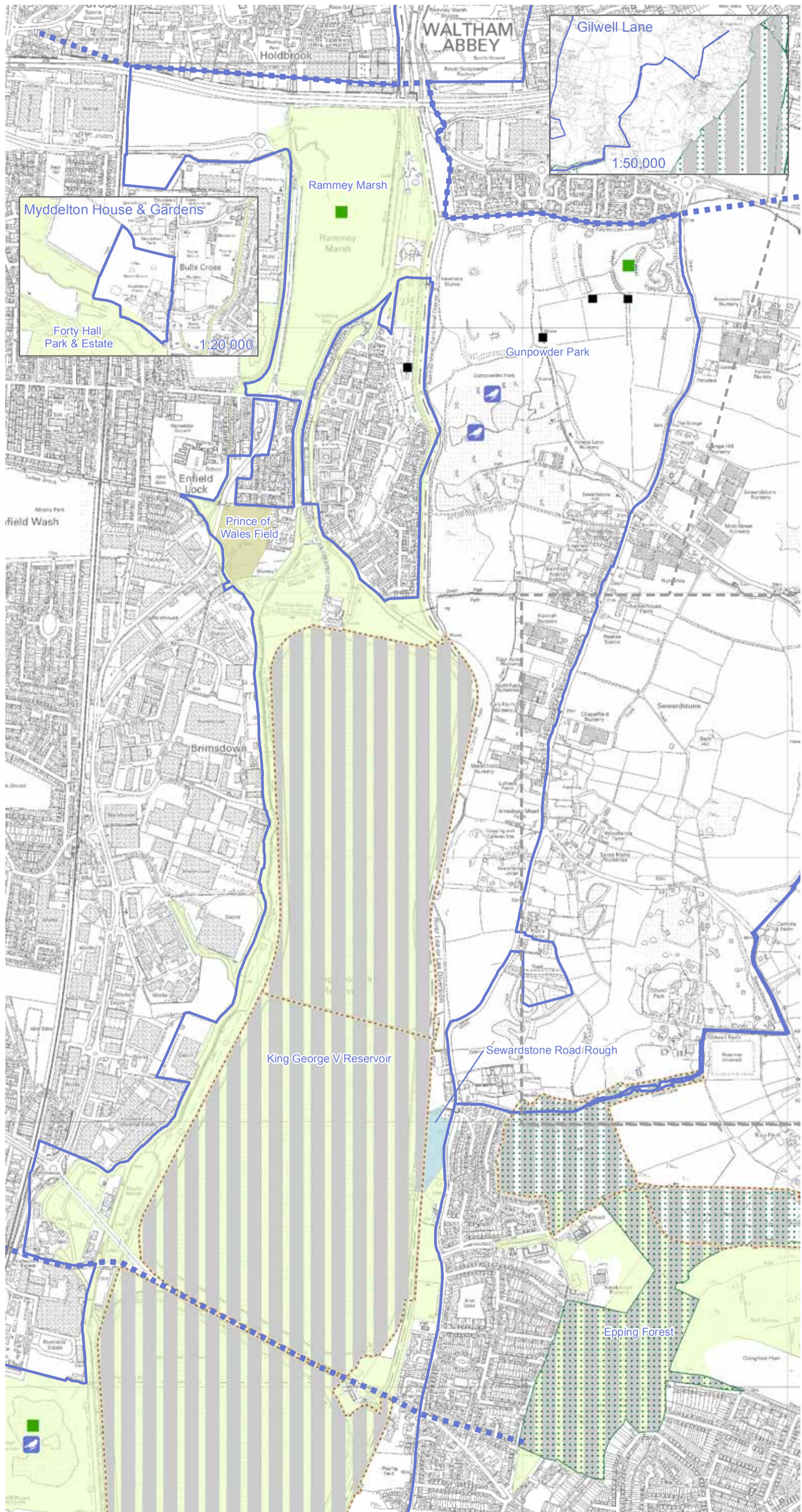
Access to Nature

- Existing Sites Offering Access to Nature

Site Unit Conditions

- Unfavourable Recovering

- LVRPA boundary
- Extent of Proposal Area 5



1:15,000@A3

Lee Valley Regional Park

Park Development Framework

The Waterlands: King George V Reservoir to Ramney Marsh

To be read in conjunction with the Area 5 Proposals Consolidated proposals by sub-area.

Thematic Proposals



Biodiversity

Access to Nature

- N Access to Nature
- V Enhanced Access to Nature Opportunity -Potential Viewing Tower
- Enhance Footpath Access (NatureTrail)

Flora & Fauna

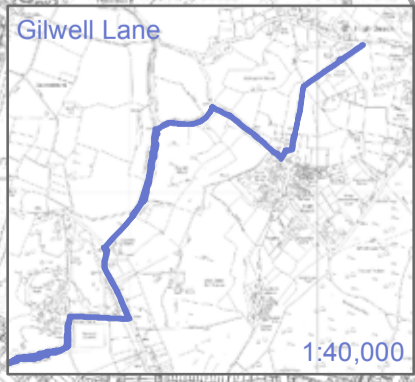
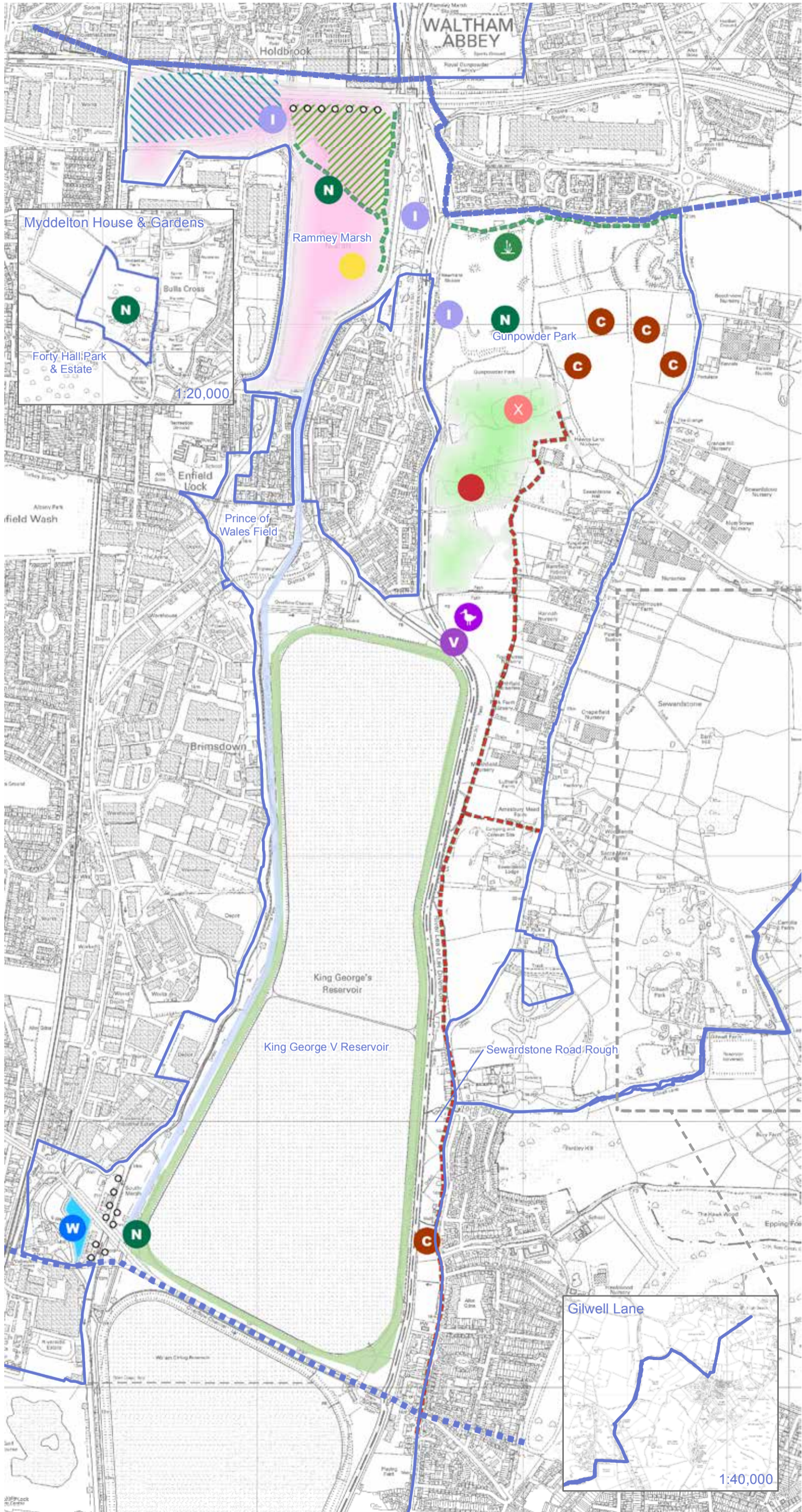
- X Extend Boardwalk over Wet Woodland
- G Grassland Management for Invertebrates & Ground Nesting Birds
- I Habitat Improvement
- W Improvements for Waders
- Knight's Pits (Reverting to Natural)
- Meadow Cuts to Encourage Diversity of Grassland Mix (Invertebrate Focus)
- C Plant Bird Mixes/Nature Crops
- W Water Meadow & Boardwalk
- Bankside Enhancements
- Enhance Ditch for Water Voles
- ○ Structure Planting
- Enhance Wet Woodland
- Grassland Restoration & Ditch Management
- Potential to be Planted up as Species Rich Grassland
- Relax Grazing & Encourage Wildflowers
- Scrub Removal
- Wildflower Meadow & Woodland Edge/River Restoration & Wildlife Pond

- LVRPA Boundary
- Extent of Proposal Area 5



1:15,000@A3

Crown Copyright and Database Rights 2013
Ordnance Survey 100019982.



Lee Valley Regional Park

Park Development Framework

The Waterlands: King George V Reservoir to Ramsey Marsh

To be read in conjunction with the Area 5 Proposals Consolidated proposals by sub-area.

Thematic Baseline

Community



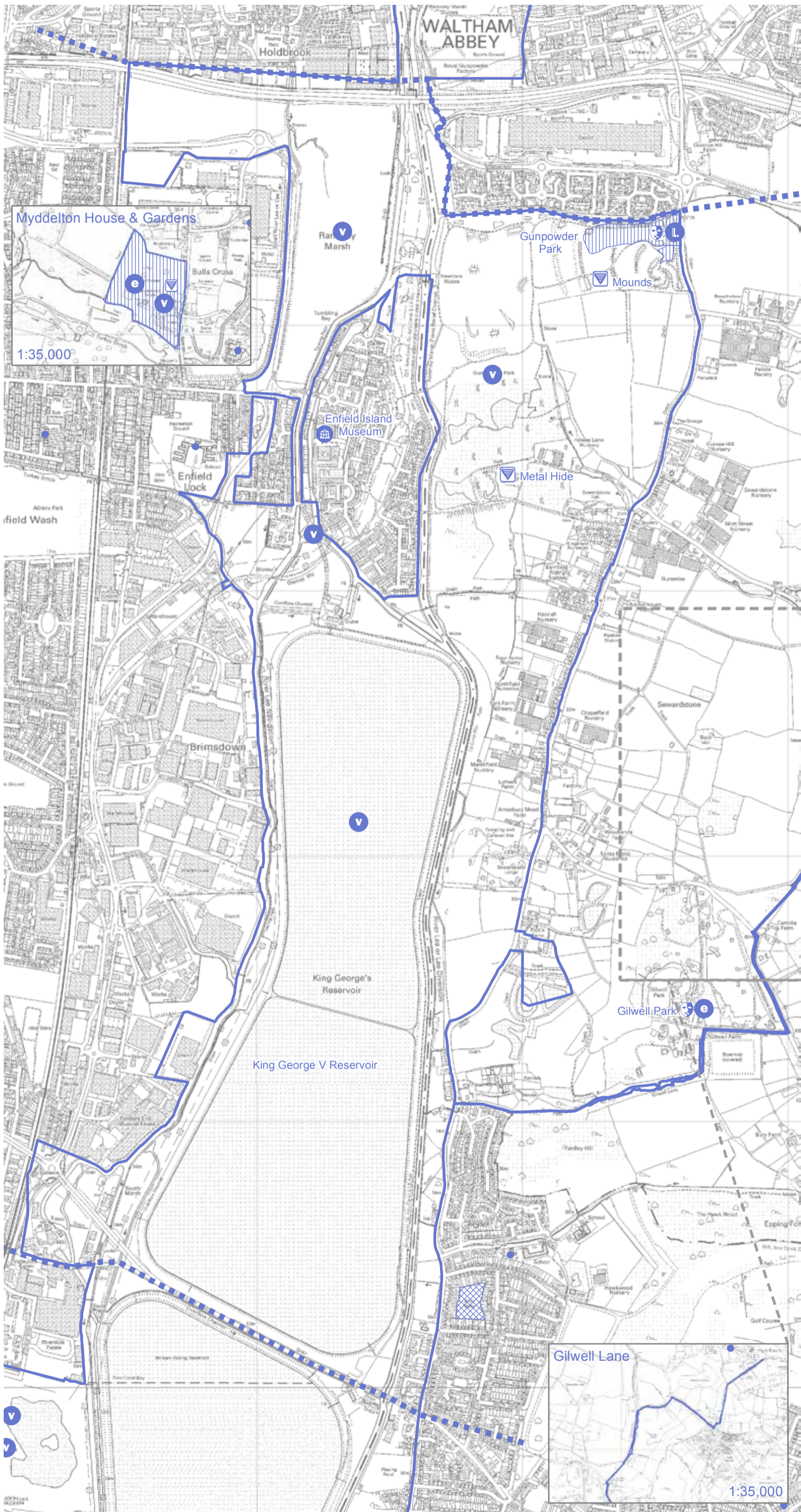
Baseline Information

Art and Culture
Art, Cultural, Entertainment Venue

- Facilities**
- Art Installation
 - Museum
 - School/Nursery
 - Education Site
 - Learning Zone
 - Volunteer Area

- Event Site
- Allotment

- LVRPA Boundary
- Extent of Proposal Area 5



1:15,000 @A3

Lee Valley Regional Park

Park Development Framework

The Waterlands: King George V Reservoir to Ramney Marsh

To be read in conjunction with the Area 5 Proposals Consolidated proposals by sub-area.

Thematic Proposal

Community



Events & Learning

- V Development and Expansion of Volunteer Activities
- L Development and Expansion of Learning Activities
- G Maintain & Enhance Gardens for Events Use
- C Outdoor Classroom
- Event Site

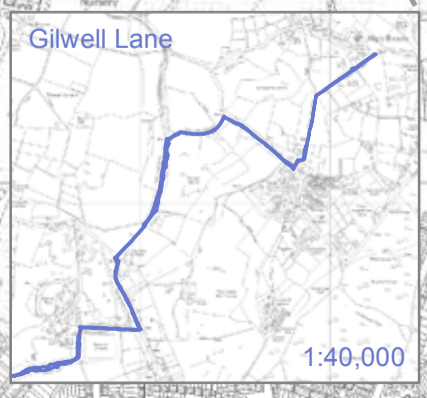
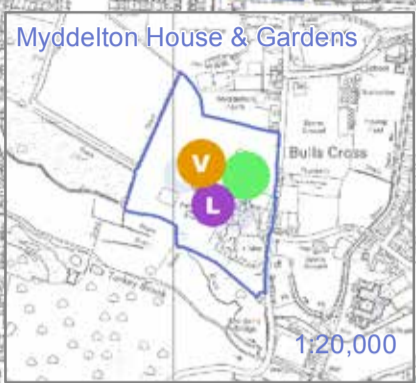
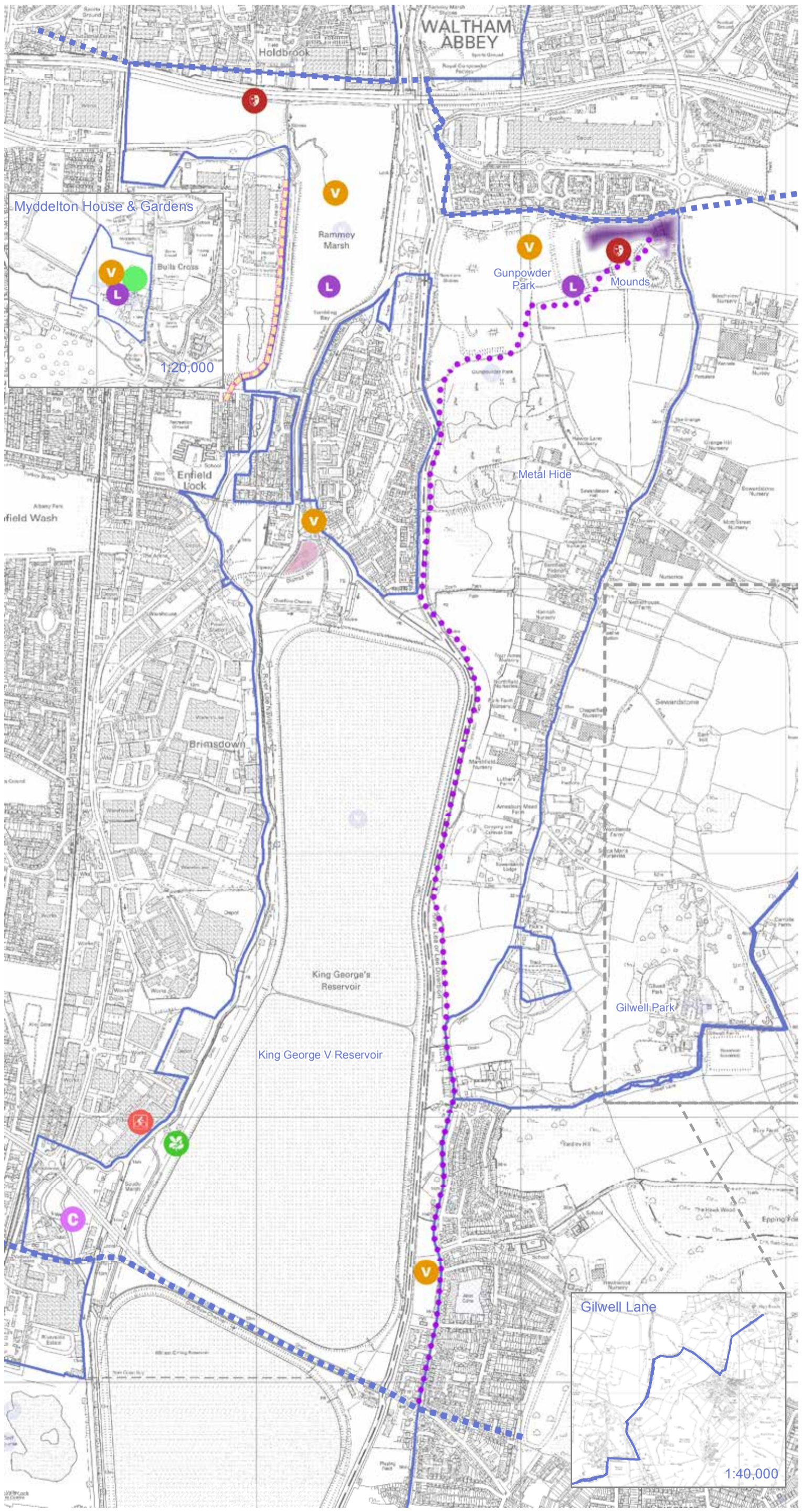
Health

- K Foot & Cycle Path
- G Community Allotment Gardens
- P Promote 'Health Walks'
- Foot & Cycle Path
- Public Space Improvements & Viewing Tower

Art

- A Large Scale Art Installation

- Extent of Proposal Area 5
- LVRPA Boundary



1:15,000 @A3

Lee Valley Regional Park

Park Development Framework

The Waterlands: King George V Reservoir to Ramme Marsh

To be read in conjunction with the Area 5 Proposals Consolidated proposals by sub-area.

Thematic Baseline Landscape and Heritage



Baseline Information

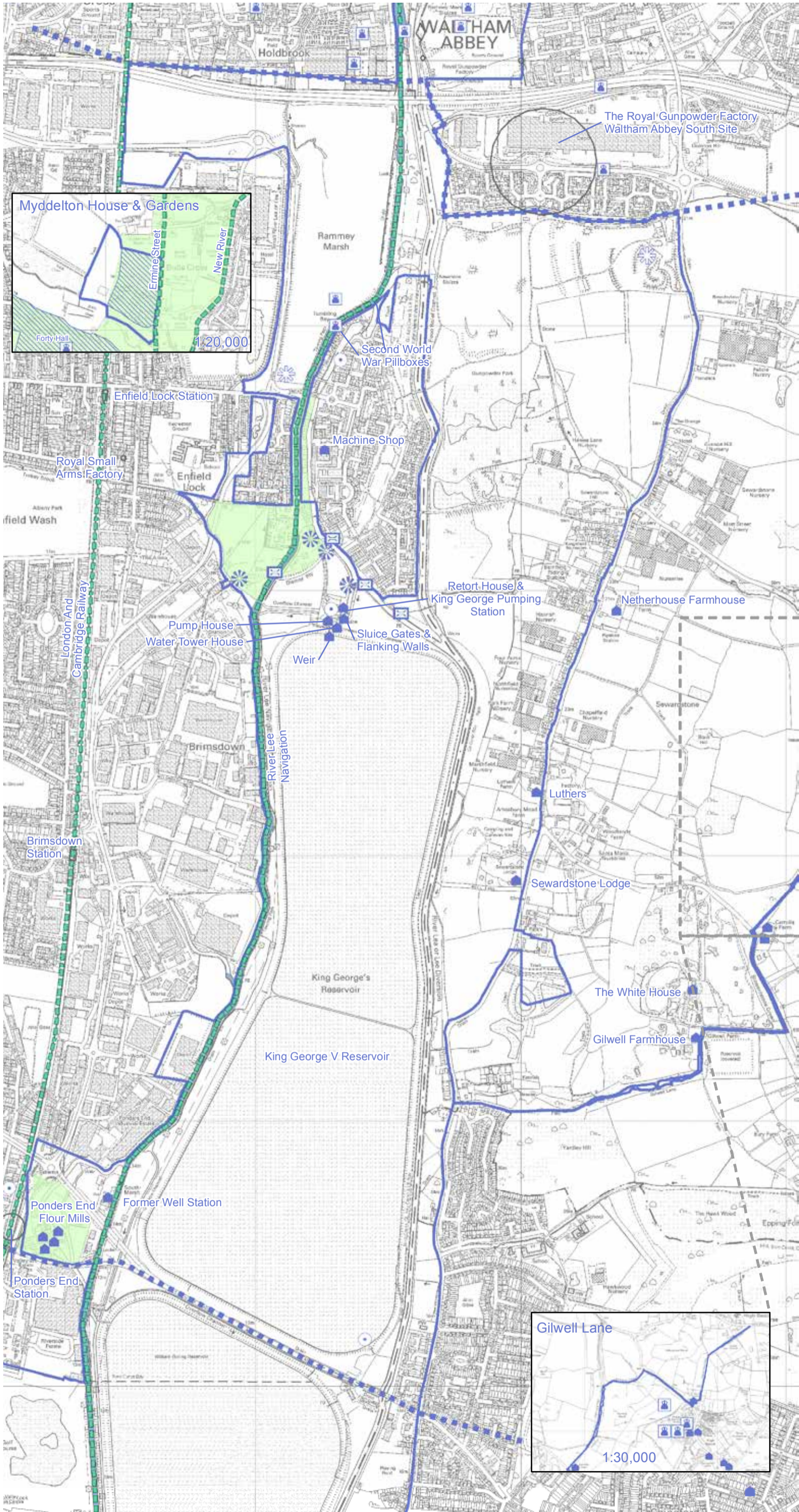
Landscape

- Landscape Gateway
- Existing Landmarks
- Bridges

Heritage

- Enfield Lock Interpretation Boards
- Listed Building
- National Record Of Historic Environment (AMIE Monument)
- National Record Of Historic Environment (AMIE Linear Feature)
- National Record Of Historic Environment (AMIE Area)
- River Lee Navigation
- Conservation Areas
- Registered Historic Parks and Gardens
- Extent of Proposal Area 5
- LVRPA Boundary

A significant part of the Regional Park is covered by Archaeological Priority Area/Zone status.



1:15,000 @A3

Lee Valley Regional Park

Park Development Framework

The Waterlands: King George V Reservoir to Ramney Marsh

To be read in conjunction with the Area 5 Proposals Consolidated proposals by sub-area.

Thematic Proposals

Landscape and Heritage



Landscape

- B Important Bridges Over Water Courses To Be Retained/ Refurbished
- * Important Entrance Into Park/ Possible Gateways
- Green Visually Attractive Edge To Be Protected
- Harsh Visually Detracting Edge/ Investment Area
- Important Views Into Park
- Significant Physical/Visual Barriers/Linkage Opportunities
- ↑ Views into Lee Valley Regional Park
- E The Evolution Bridge (connections over railway tracks)
- Structure Planting
- Public Space & Habitat Improvements
- Public Space Improvements & Viewing Tower
- Watermeadow With Boardwalks & Bird Hides
- ▨ Borrowed Landscape Character - landscape character outside the park contributing to valley image
- ▨ Landscape Enhancement Area - mixture of strong and weaker landscape character requiring enhancement through design/ management
- ▨ Landscape Investment Area - fragmented landscape character in need of major investment
- ▨ Landscape Conservation Area - strong landscape character to be protected

Heritage

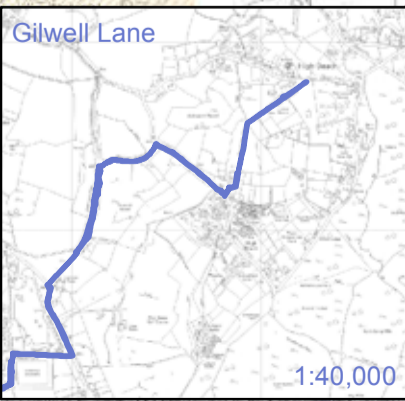
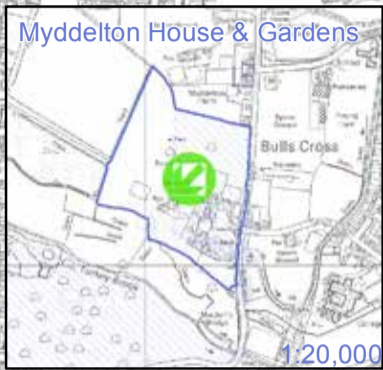
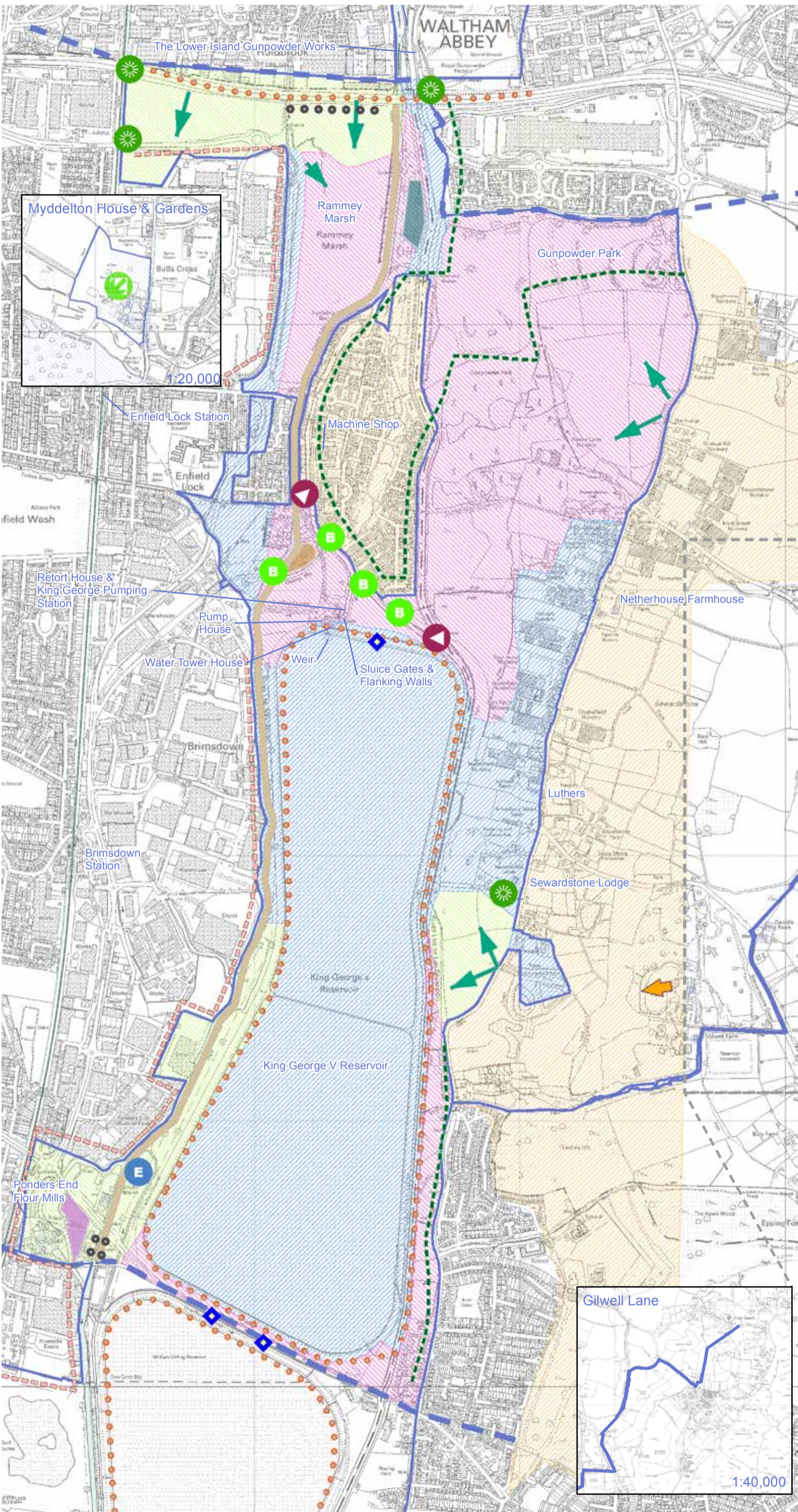
- ▲ Space Enhancing Visibility of Royal Small Arms Factory & Reservoirs
- ◆ Old River Course Interpretation Boards
- * Enhance & Protect Heritage
- Proposed Heritage Trail Linking Ponders End Flour Mills, Enfield Lock, Gunpowder Park Through to Waltham Abbey

□ LVRPA boundary
■ ■ ■ Extent of Proposal Area 5

0 250 500
 m

Main map 1:15,000 @A3

Crown Copyright and Database Rights 2013
 Ordnance Survey 100019982.



Lee Valley Regional Park

Park Development Framework

The Waterlands: King George V Reservoir to Ramsey Marsh

To be read in conjunction with the Area 5 Proposals Consolidated proposals by sub-area.

Thematic Baseline Environment



Baseline Information

Facilities and Land

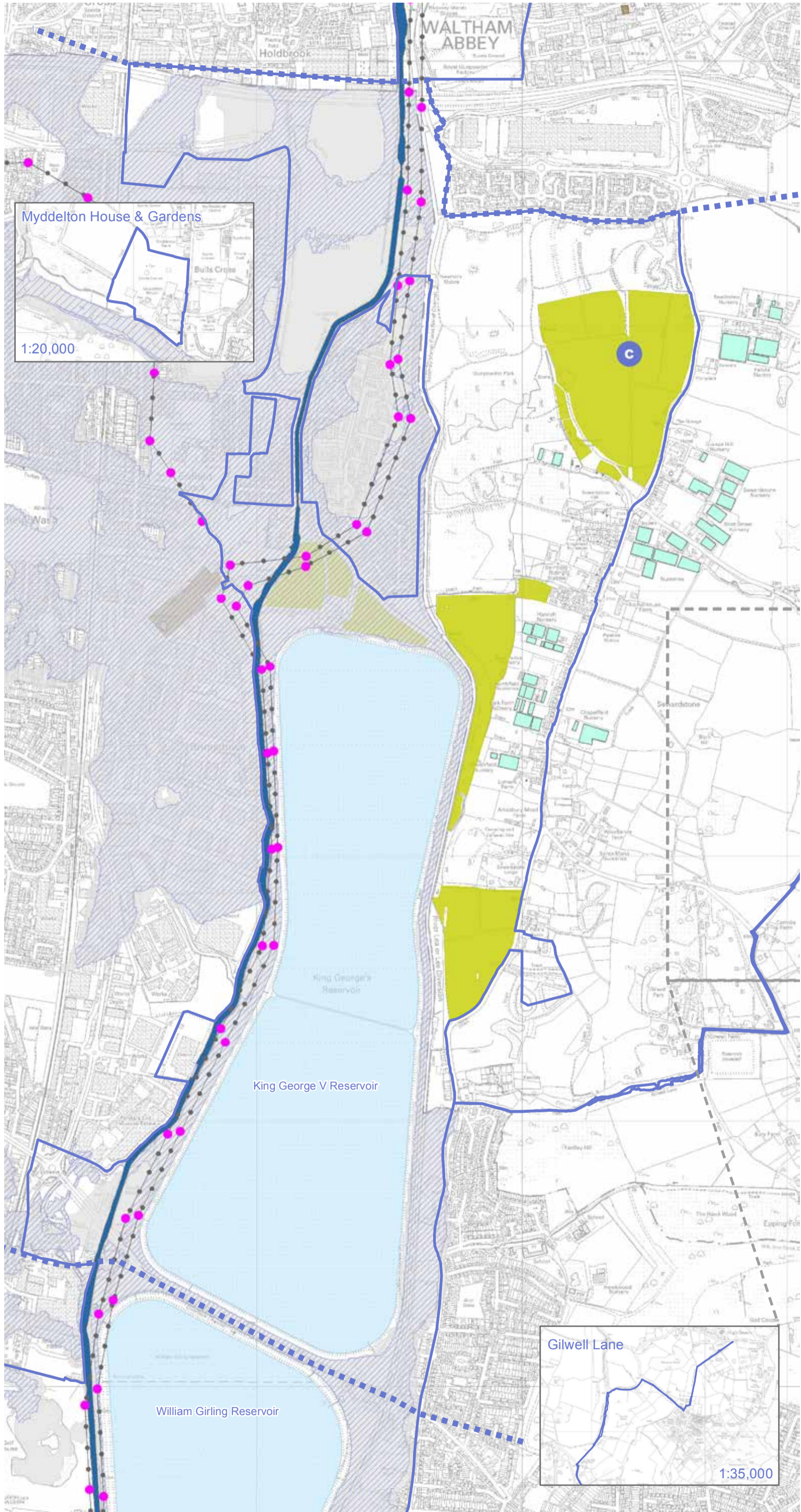
- Monitored Containment Cell
- Pylon
- Powerlines
- Glasshouses
- Agriculture
- Substation Site

Flood Risk

- Flood Zone 2 - Between a 1 in 100 and 1 in 1000 Annual Probability of River Flooding (1%-0.1%)
 - Flood Zone 3 - 1 in 100 or Greater Annual Probability of River Flooding (>1%)
- *Source: EA Flood Risk Assessment Guidance Note 3*

Water

- Reservoirs (Potable Water Supply)
- River Lee Navigation
- LVRPA Boundary
- Extent of Proposal Area 5



1:15,000@A3

Lee Valley Regional Park

Park Development Framework

The Waterlands: King George V Reservoir to Ramney Marsh

To be read in conjunction with the Area 5 Proposals Consolidated proposals by sub-area.

Thematic Proposals

Environment



Water

- Water Monitoring
- Dredging & Reinstating of Swan & Pike Wier Pool
- Water Supply - Management of Reservoirs
- Restore Overflow Channel
- Water Management Area

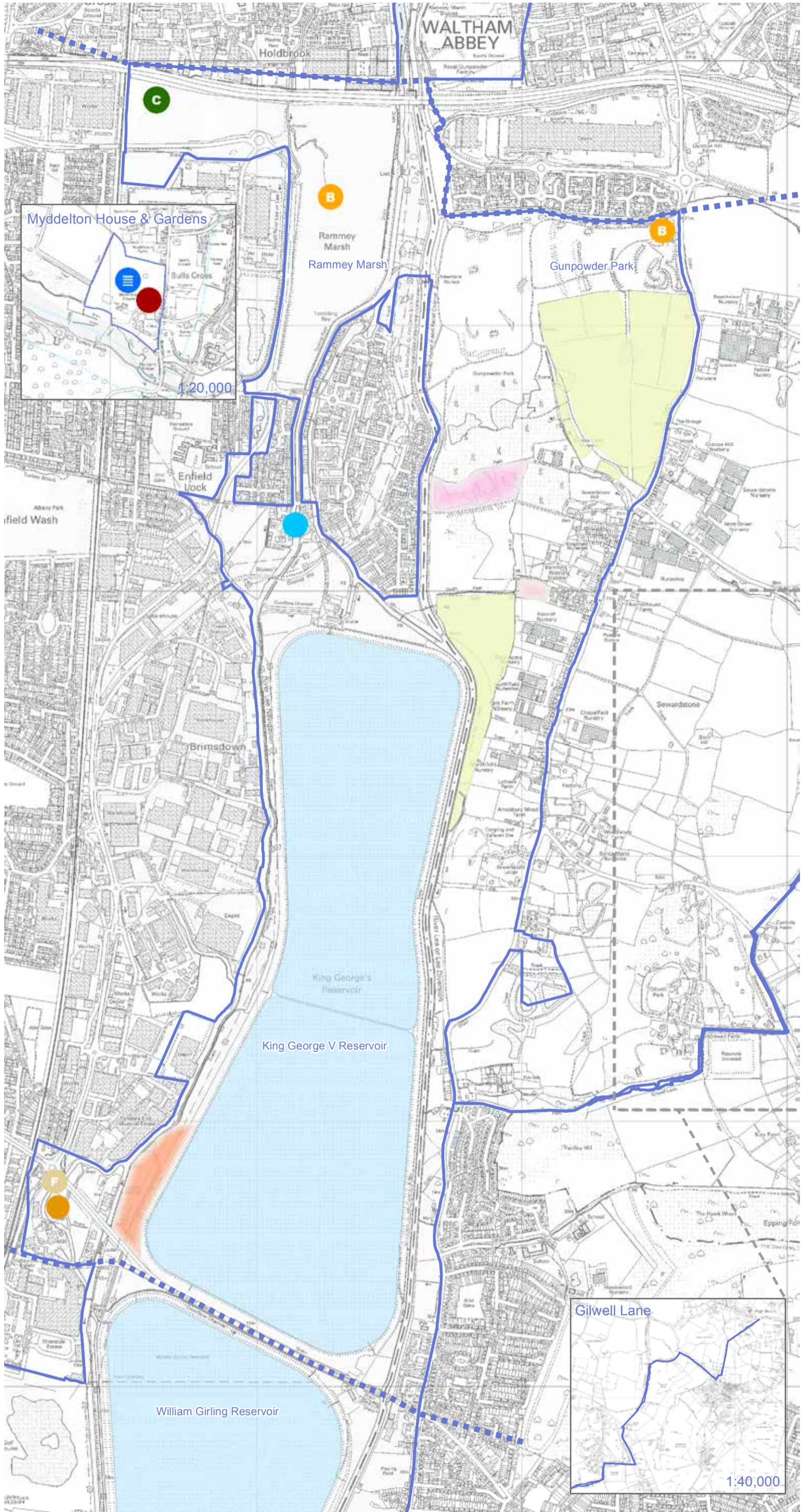
Production

- Bees - Potential Food Production (Explore Options to Install Beehives)
- Community Allotments
- Small Scale Farming Initiative
- Support Small Scale Food Production at Myddelton House Gardens

Land

- Commercial Crop/Biodiversity Related Crop
- Agriculture

- Extent of Proposal Area 5
- LVRPA Boundary



1:15,000@A3



Lee Valley Regional Park Authority
Myddelton House
Bulls Cross
Enfield
Middlesex
EN2 9HG

Tel. 01992 717 711
Fax. 01992 788 623

www.leevalleypark.org.uk