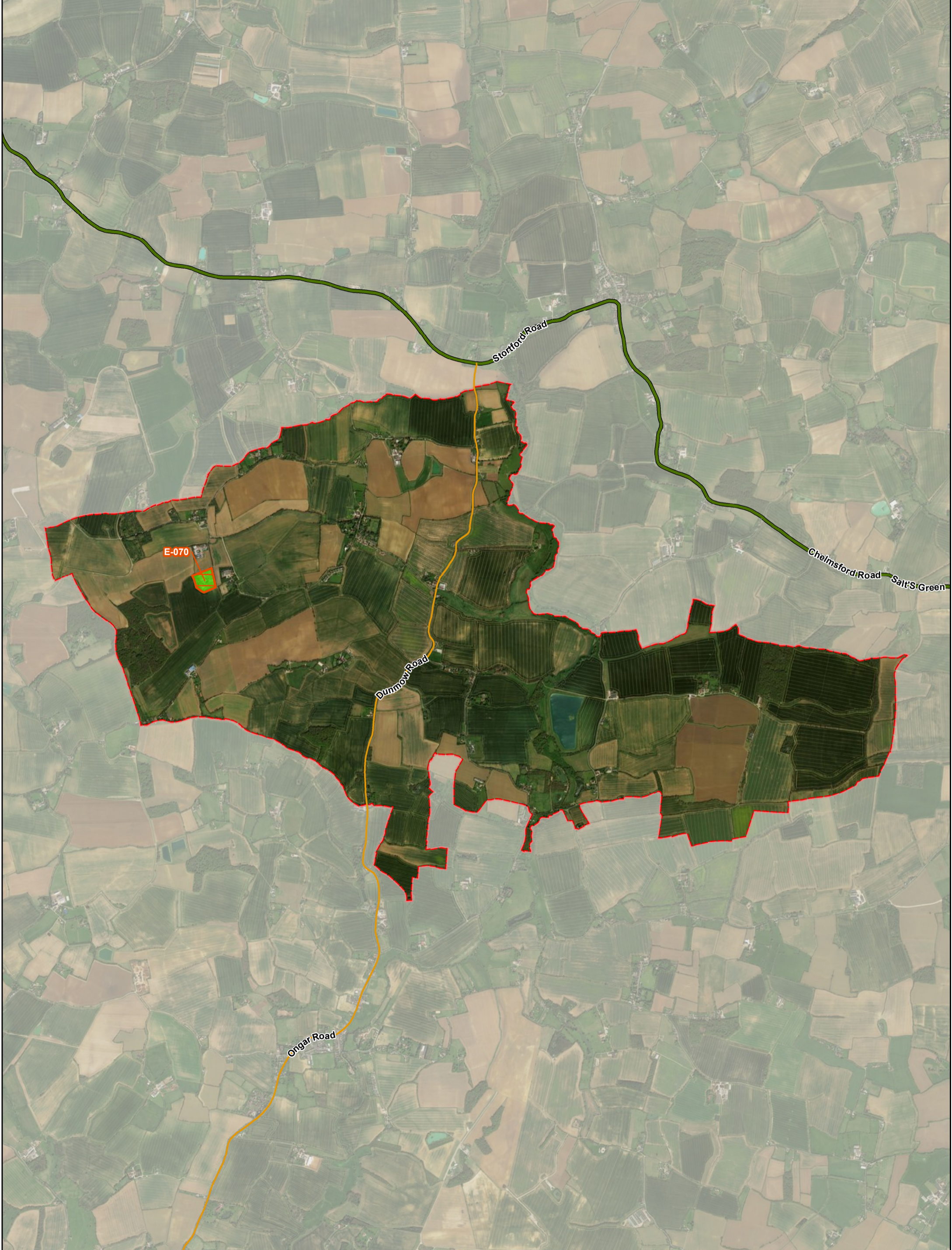


Appendix D2

Status of
Employment Sites
after Site Visits



Employment Land Supply Assessment

ARUP

Epping Forest District Council

Drawing No. Map 1

Date: December 2017

Scale: 1:29,000 @A3

Content

Status of employment sites after site visits in Abbess Beauchamp and Berners Roding

Source: Esri, DigitalGlobe, GeoEye, Earthstar Geographics, CNES/Airbus DS, USDA, USGS, AEX, Getmapping, Aerogrid, IGN, IGP, swisstopo and the GIS User Community.

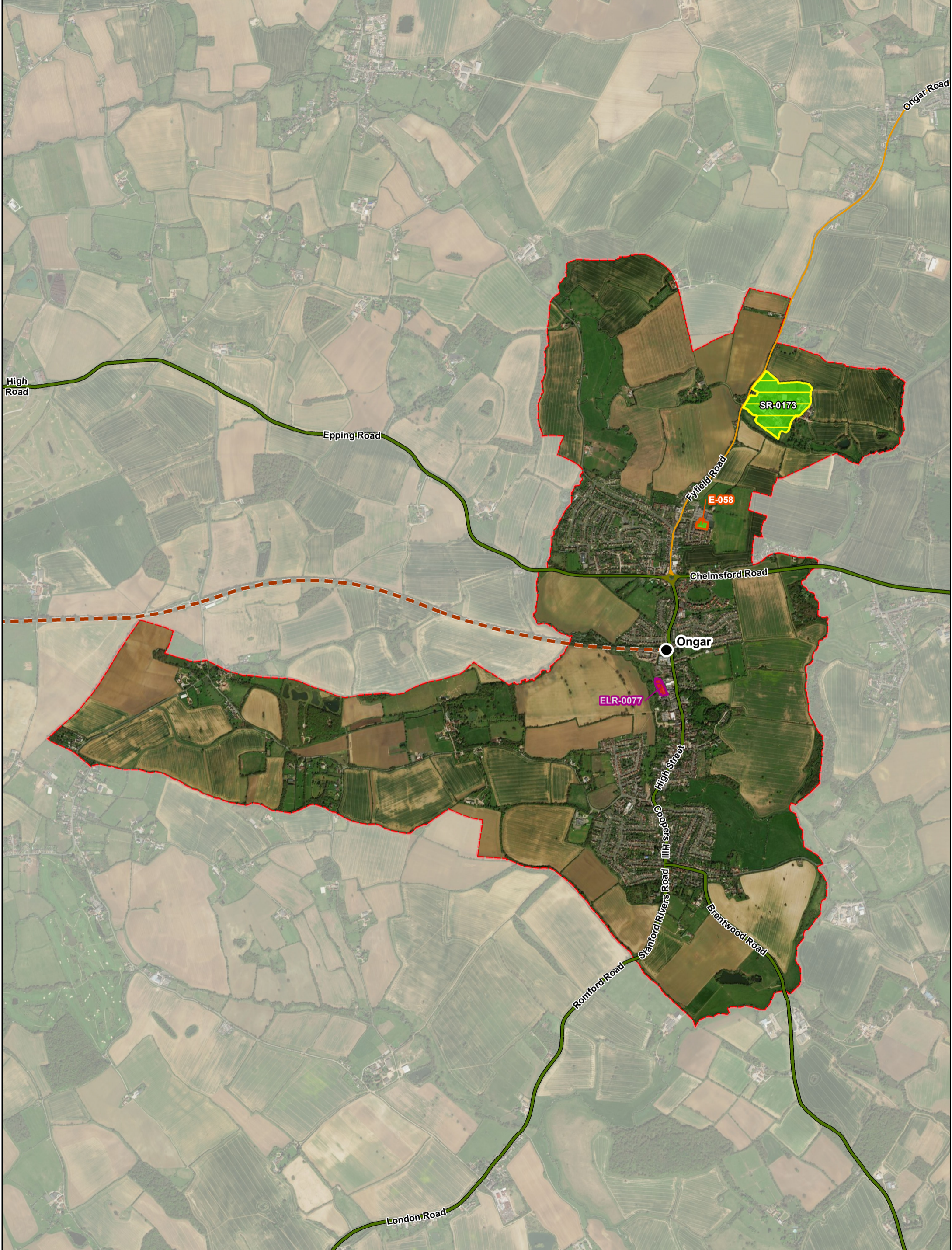
Contains Ordnance Survey & Royal Mail Data
© Crown Copyright & Database Right 2016
EFDC Licence No: 100018534 2016

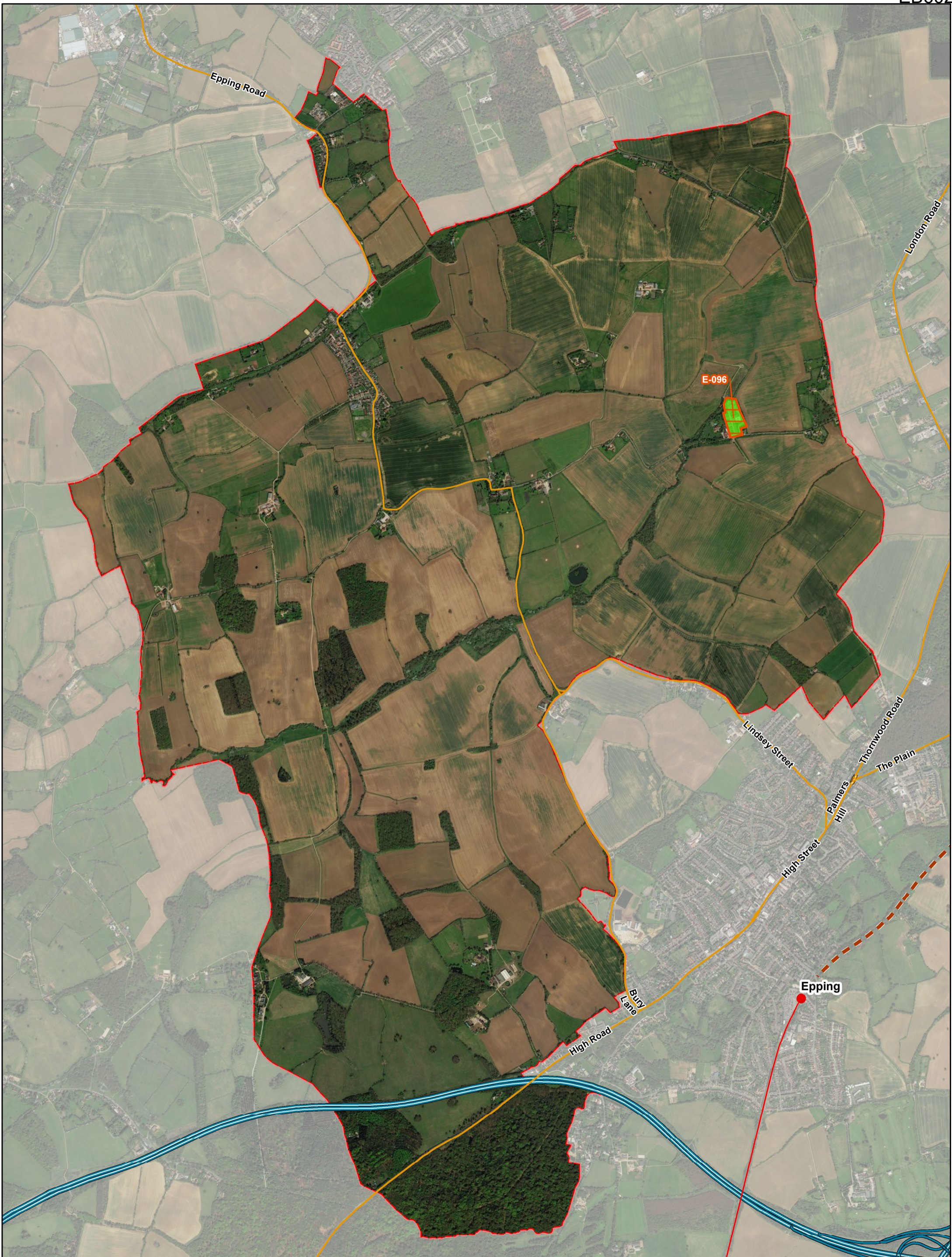
Legend

- 2006 Local Plan Allocation
- Employment Land Review (2010) (ELR- site)
- SR- site (see Legend in Appendix D.1)
- Epping Forest District Council records (E- site)
- Site proceeds after site visit
- Site does not proceed after site visit
- Parish Boundary

N







Employment Land Supply Assessment
ARUP
 Epping Forest District Council

Drawing No. Map 1
 Date: December 2017
 Scale: 1:19,500 @A3

Content
 Status of employment sites after site visits in Epping Upland

Source: Esri, DigitalGlobe, GeoEye, Earthstar Geographics, CNES/Airbus DS, USDA, USGS, AEX, Getmapping, Aerogrid, IGN, IGP, swisstopo and the GIS User Community.

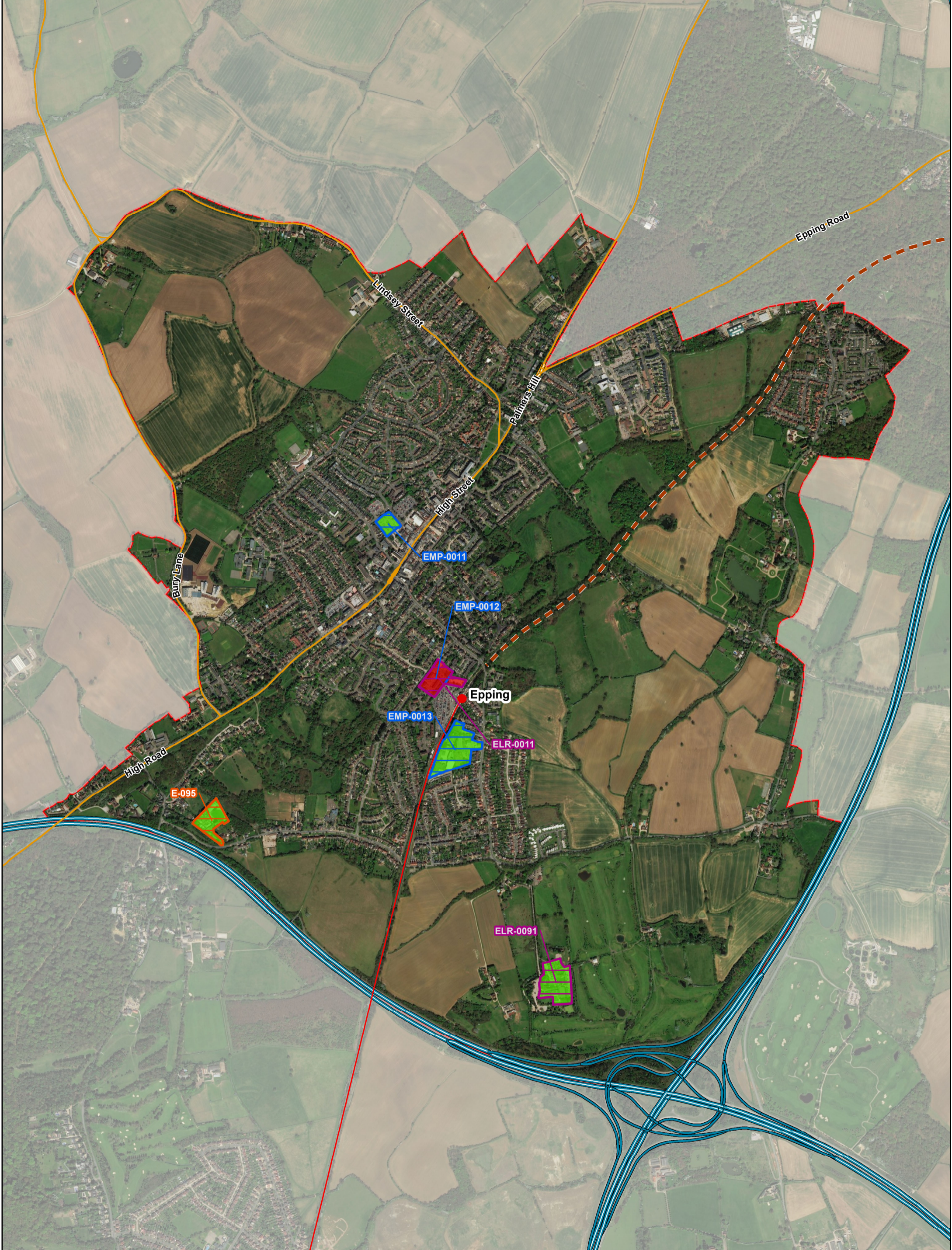
Contains Ordnance Survey & Royal Mail Data
 © Crown Copyright & Database Right 2016
 EFDC Licence No: 100018534 2016

Legend

- 2006 Local Plan Allocation
- Employment Land Review (2010) (ELR- site)
- SR- site (see Legend in Appendix D.1)
- Epping Forest District Council records (E- site)

- Site proceeds after site visit
- Site does not proceed after site visit
- Parish Boundary

N



Employment Land Supply Assessment

ARUP

Epping Forest District Council

Drawing No. Map 1

Date: December 2017

Scale: 1:13,000 @A3

Content

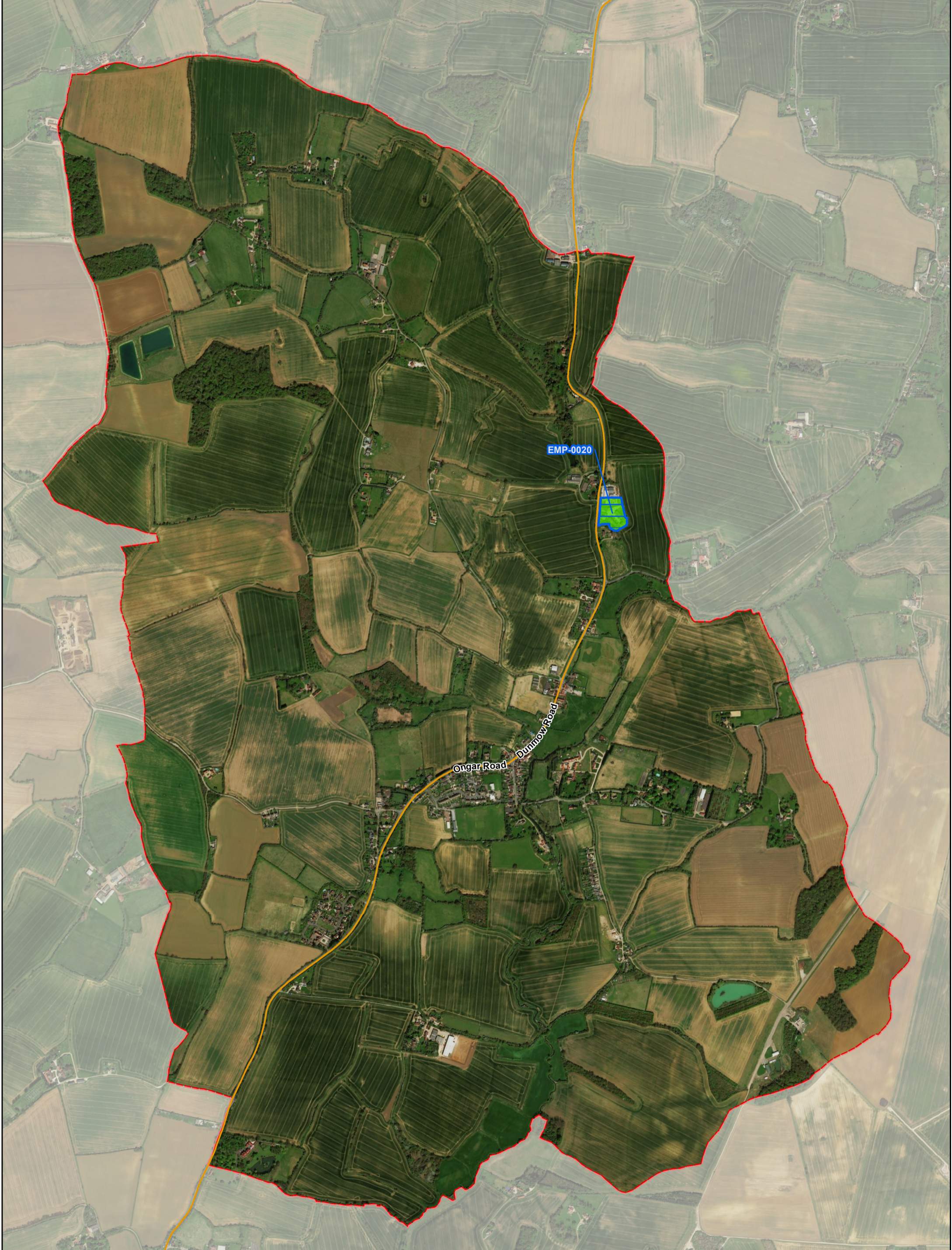
Status of employment sites after site visits in Epping

Source: Esri, DigitalGlobe, GeoEye, Earthstar Geographics, CNES/Airbus DS, USDA, USGS, AEX, Getmapping, Aerogrid, IGN, IGP, swisstopo and the GIS User Community.

Contains Ordnance Survey & Royal Mail Data
© Crown Copyright & Database Right 2016
EFDC Licence No: 100018534 2016

- Legend**
- 2006 Local Plan Allocation
 - Employment Land Review (2010) (ELR- site)
 - SR- site (see Legend in Appendix D.1)
 - Epping Forest District Council records (E- site)

- Site proceeds after site visit
 - Site does not proceed after site visit
 - Parish Boundary
- N
-



Employment Land Supply Assessment



Epping Forest District Council

Drawing No. Map 1

Date: December 2017

Scale: 1:13,000 @A3

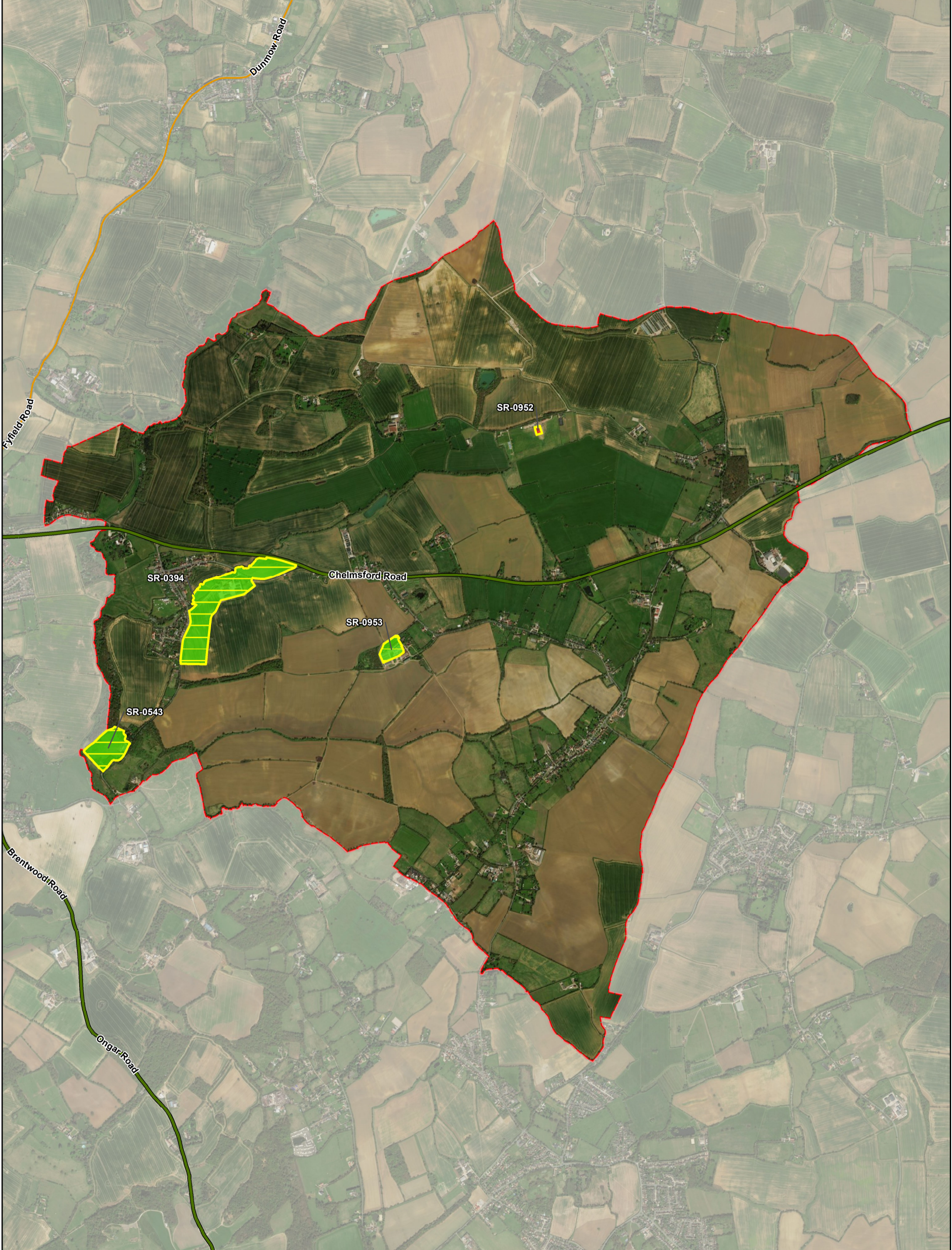
Content
Status of employment sites after site visits in Fyfield

Source: Esri, DigitalGlobe, GeoEye, Earthstar Geographics, CNES/Airbus DS, USDA, USGS, AEX, Getmapping, Aerogrid, IGN, IGP, swisstopo and the GIS User Community.
Contains Ordnance Survey & Royal Mail Data
© Crown Copyright & Database Right 2016
EFDC Licence No: 100018534 2016

- Legend**
- 2006 Local Plan Allocation
 - Employment Land Review (2010) (ELR- site)
 - SR- site (see Legend in Appendix D.1)
 - Epping Forest District Council records (E- site)

- Site proceeds after site visit
- Site does not proceed after site visit
- Parish Boundary





Employment Land Supply Assessment

ARUP

Epping Forest District Council

Drawing No. Map 1

Date: December 2017

Scale: 1:21,500 @A3

Content

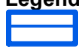



Status of employment sites after site visits in High Ongar





Source: Esri, DigitalGlobe, GeoEye, Earthstar Geographics, CNES/Airbus DS, USDA, USGS, AEX, Getmapping, Aerogrid, IGN, IGP, swisstopo and the GIS User Community.

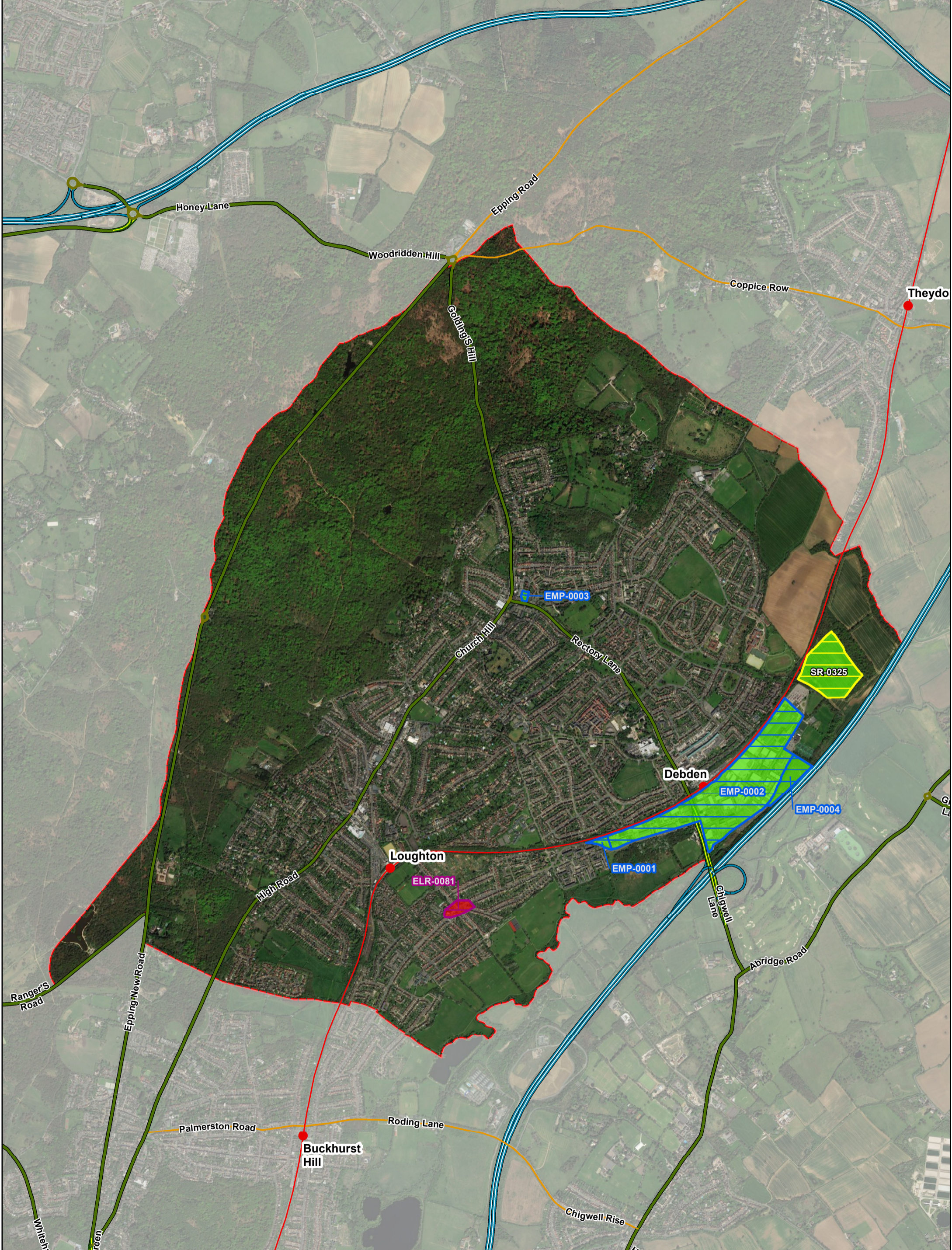
Contains Ordnance Survey & Royal Mail Data

© Crown Copyright & Database Right 2016

EFDC Licence No: 100018534 2016

- Legend**
-  2006 Local Plan Allocation
 -  Employment Land Review (2010) (ELR- site)
 -  SR- site (see Legend in Appendix D.1)
 -  Epping Forest District Council records (E- site)

-  Site proceeds after site visit
 -  Site does not proceed after site visit
 -  Parish Boundary
- N
- 



Employment Land Supply Assessment

ARUP

Epping Forest District Council

Drawing No. Map 1

Date: December 2017

Scale: 1:20,500 @A3

Content

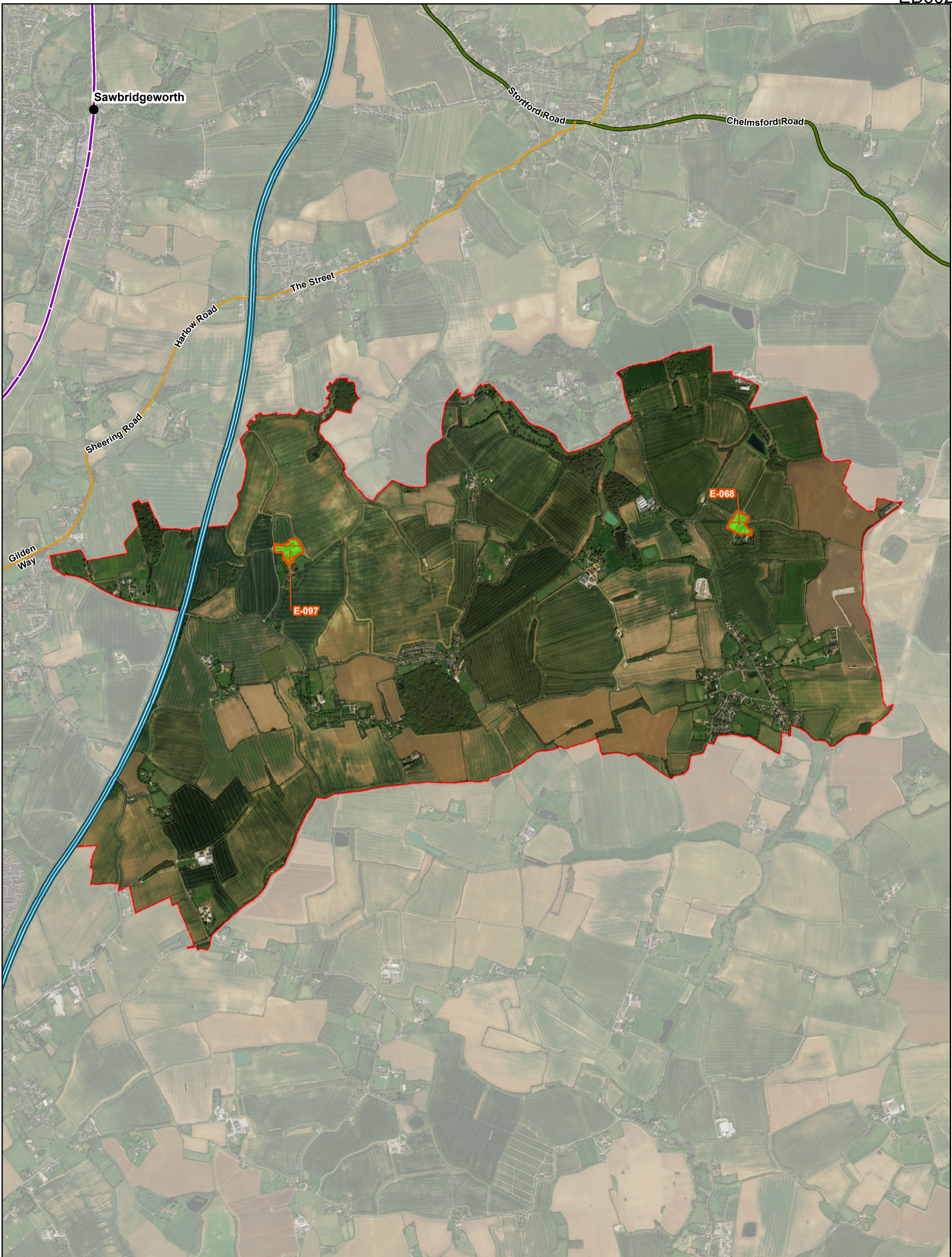
Status of employment sites after site visits in Loughton

Source: Esri, DigitalGlobe, GeoEye, Earthstar Geographics, CNES/Airbus DS, USDA, USGS, AEX, Getmapping, Aerogrid, IGN, IGP, swisstopo and the GIS User Community.

Contains Ordnance Survey & Royal Mail Data
© Crown Copyright & Database Right 2016
EFDC Licence No: 100018534 2016

- Legend**
- 2006 Local Plan Allocation
 - Employment Land Review (2010) (ELR- site)
 - SR- site (see Legend in Appendix D.1)
 - Epping Forest District Council records (E- site)

- Site proceeds after site visit
 - Site does not proceed after site visit
 - Parish Boundary
- N
-



Employment Land Supply Assessment



Epping Forest District Council

Drawing No. Map 1

Date: December 2017

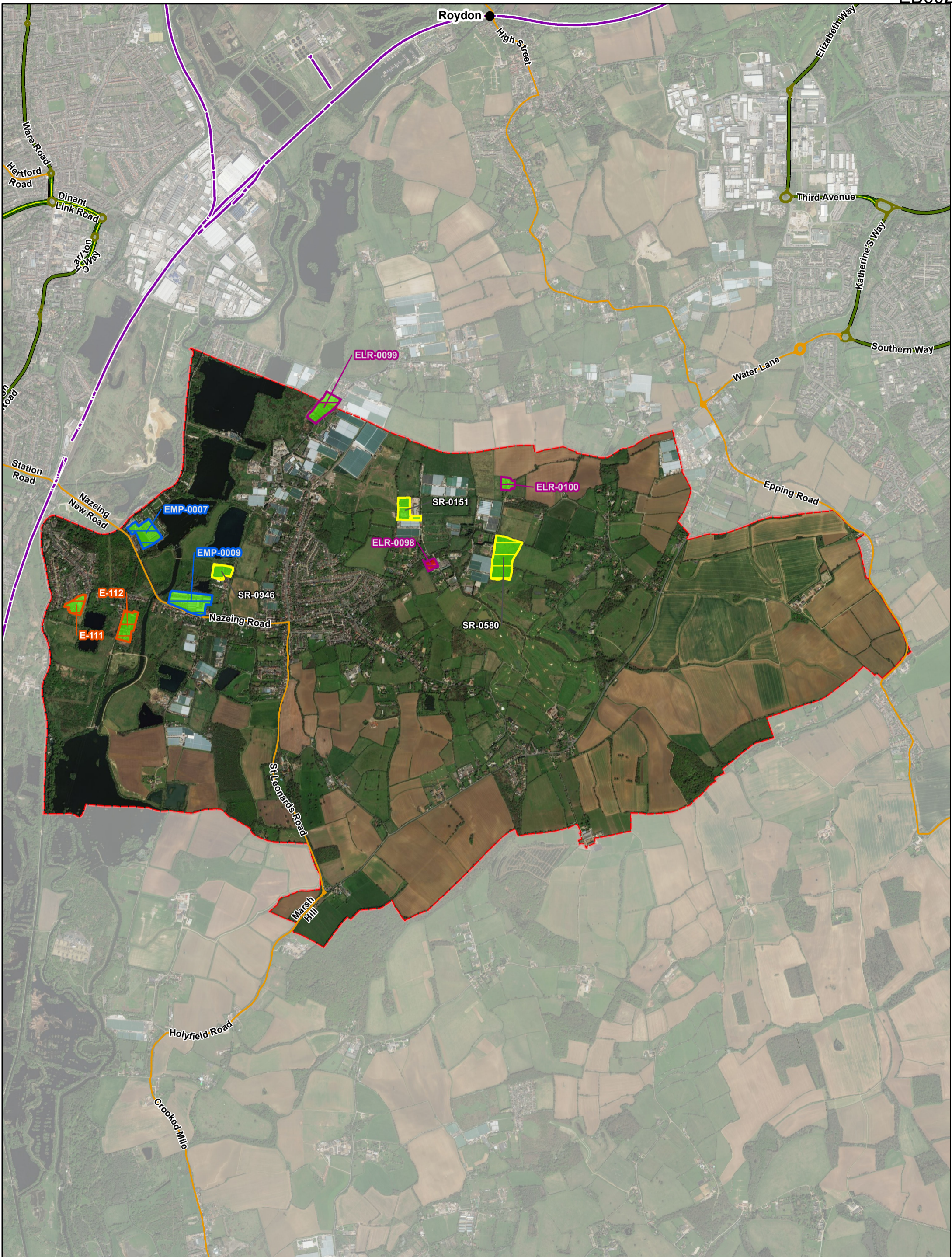
Scale: 1:23,000 @A3

Content
Status of employment sites after site visits in Matching

Source: Esri, DigitalGlobe, GeoEye, Earthstar Geographics, CNES/Airbus DS, USDA, USGS, AEX, Getmapping, Aerogrid, IGN, IGP, swisstopo and the GIS User Community.
Contains Ordnance Survey & Royal Mail Data
© Crown Copyright & Database Right 2016
EFDC Licence No: 100018534 2016

	2006 Local Plan Allocation		Site proceeds after site visit
	Employment Land Review (2010) (ELR- site)		Site does not proceed after site visit
	SR- site (see Legend in Appendix D.1)		Parish Boundary
	Epping Forest District Council records (E- site)		





Employment Land Supply Assessment

ARUP

Epping Forest District Council

Drawing No. Map 1

Date: December 2017

Scale: 1:24,500 @A3

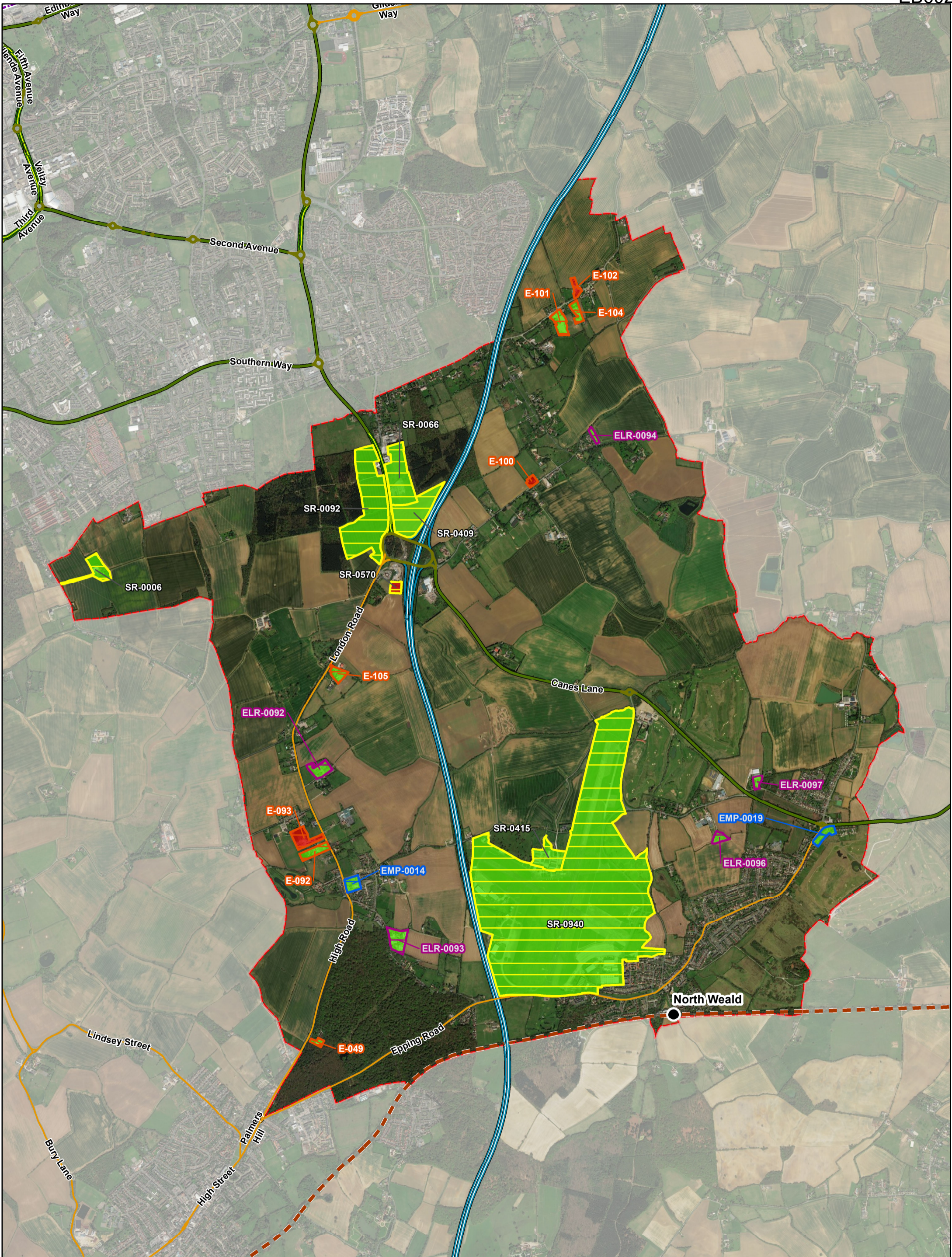
Content
Status of employment sites after site visits in Nazeing

Source: Esri, DigitalGlobe, GeoEye, Earthstar Geographics, CNES/Airbus DS, USDA, USGS, AEX, Getmapping, Aerogrid, IGN, IGP, swisstopo and the GIS User Community.

Contains Ordnance Survey & Royal Mail Data
© Crown Copyright & Database Right 2016
EFDC Licence No: 100018534 2016

- Legend**
- 2006 Local Plan Allocation
 - Employment Land Review (2010) (ELR- site)
 - SR- site (see Legend in Appendix D.1)
 - Epping Forest District Council records (E- site)

- Site proceeds after site visit
 - Site does not proceed after site visit
 - Parish Boundary
- N
▲



Employment Land Supply Assessment



Epping Forest District Council

Drawing No. Map 1

Date: December 2017

Scale: 1:25,000 @A3

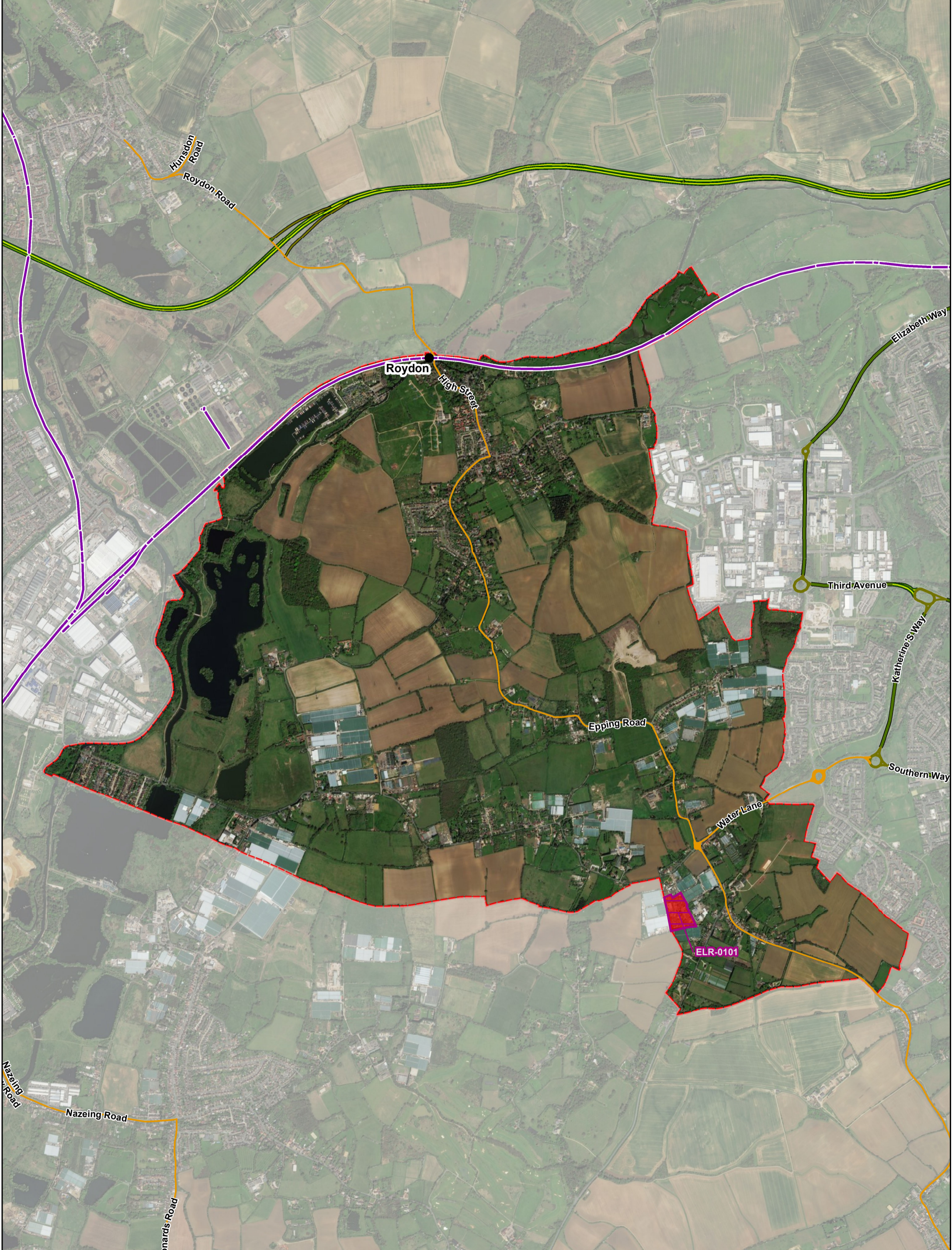
Content
Status of employment sites after site visits in North Weald Bassett

Source: Esri, DigitalGlobe, GeoEye, Earthstar Geographics, CNES/Airbus DS, USDA, USGS, AEX, Getmapping, Aerogrid, IGN, IGP, swisstopo and the GIS User Community.
Contains Ordnance Survey & Royal Mail Data
© Crown Copyright & Database Right 2016
EFDC Licence No: 100018534 2016

- Legend**
- 2006 Local Plan Allocation
 - Employment Land Review (2010) (ELR- site)
 - SR- site (see Legend in Appendix D.1)
 - Epping Forest District Council records (E- site)

- Site proceeds after site visit
- Site does not proceed after site visit
- Parish Boundary





Employment Land Supply Assessment

ARUP

Epping Forest District Council

Drawing No. Map 1

Date: December 2017

Scale: 1:19,500 @A3

Content

Status of employment sites after site visits in Roydon

Source: Esri, DigitalGlobe, GeoEye, Earthstar Geographics, CNES/Airbus DS, USDA, USGS, AEX, Getmapping, Aerogrid, IGN, IGP, swisstopo and the GIS User Community.

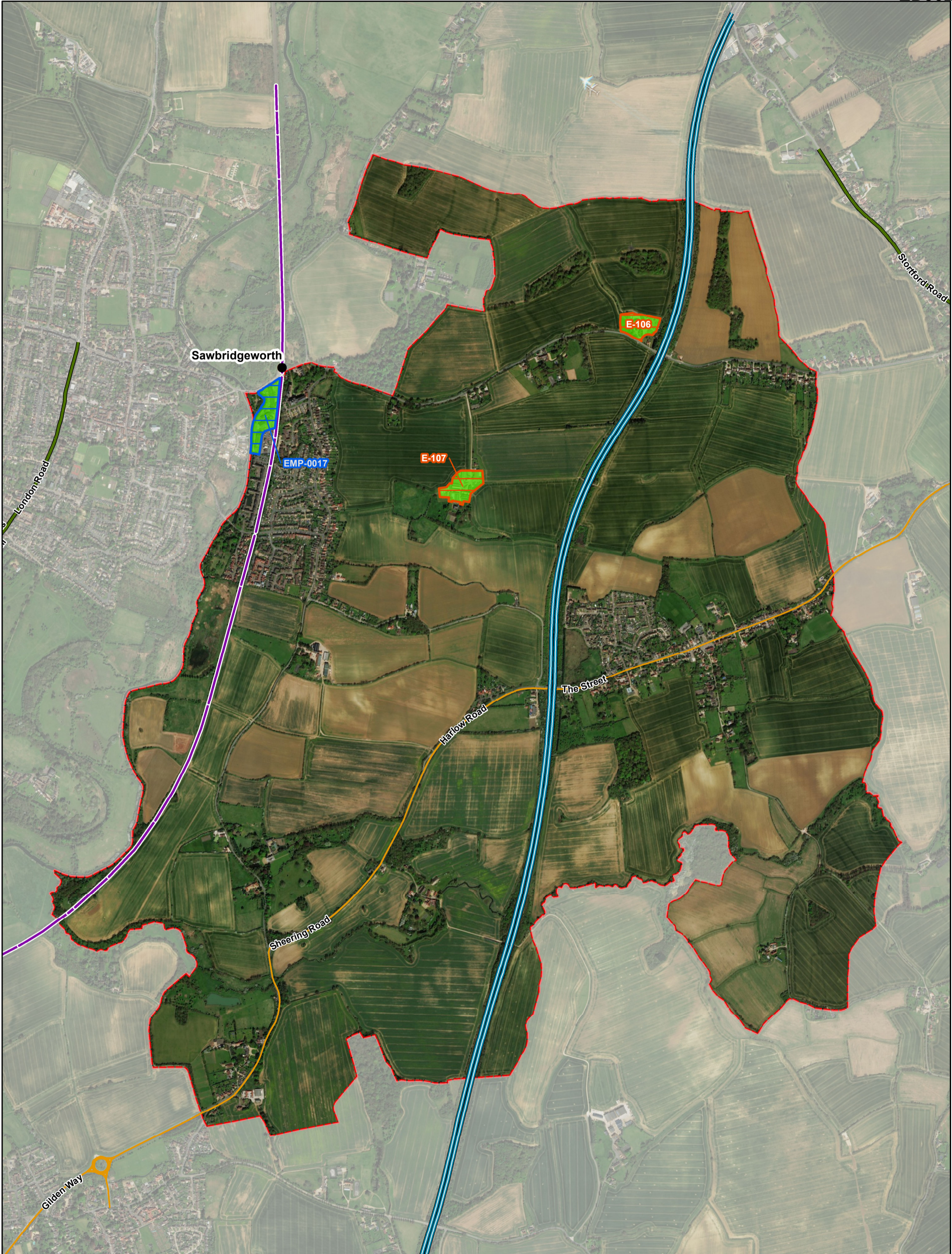
Contains Ordnance Survey & Royal Mail Data

© Crown Copyright & Database Right 2016

EFDC Licence No: 100018534 2016

- Legend**
- 2006 Local Plan Allocation
 - Employment Land Review (2010) (ELR- site)
 - SR- site (see Legend in Appendix D.1)
 - Epping Forest District Council records (E- site)

- Site proceeds after site visit
 - Site does not proceed after site visit
 - Parish Boundary
- N
-



Sawbridgeworth

London Road

Sturford Road

E-106

EMP-0017

E-107

Harlow Road

The Street

Sheering Road

Gilden Way

Employment Land Supply Assessment

ARUP

Epping Forest District Council

Drawing No. Map 1

Date: December 2017





Scale: 1:13,500 @A3




Content

Status of employment sites after site visits in Sheering

Source: Esri, DigitalGlobe, GeoEye, Earthstar Geographics, CNES/Airbus DS, USDA, USGS, AEX, Getmapping, Aerogrid, IGN, IGP, swisstopo and the GIS User Community.
Contains Ordnance Survey & Royal Mail Data
© Crown Copyright & Database Right 2016
EFDC Licence No: 100018534 2016

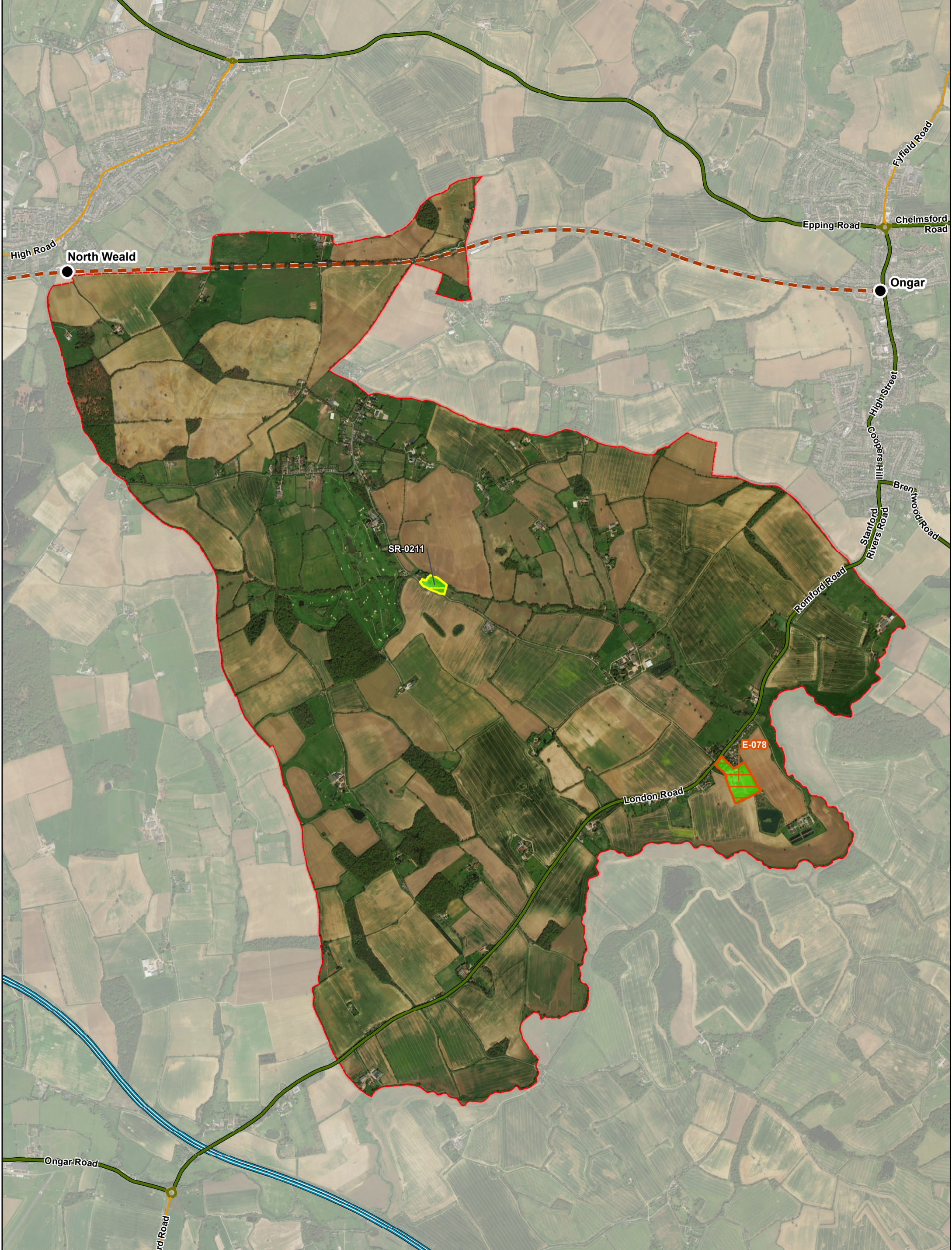
Legend

-  2006 Local Plan Allocation
-  Employment Land Review (2010) (ELR- site)
-  SR- site (see Legend in Appendix D.1)
-  Epping Forest District Council records (E- site)

-  Site proceeds after site visit
-  Site does not proceed after site visit
-  Parish Boundary

N





Employment Land Supply Assessment

ARUP

Epping Forest District Council

Drawing No. Map 1

Date: December 2017

Scale: 1:22,500 @A3

Content

Status of employment sites after site visits in Stanford Rivers

Source: Esri, DigitalGlobe, GeoEye, Earthstar Geographics, CNES/Airbus DS, USDA, USGS, AEX, Getmapping, Aerogrid, IGN, IGP, swisstopo and the GIS User Community.

Contains Ordnance Survey & Royal Mail Data
© Crown Copyright & Database Right 2016
EFDC Licence No: 100018534 2016

Legend

- 2006 Local Plan Allocation
- Employment Land Review (2010) (ELR- site)
- SR- site (see Legend in Appendix D.1)
- Epping Forest District Council records (E- site)
- Site proceeds after site visit
- Site does not proceed after site visit
- Parish Boundary

N



Employment Land Supply Assessment
ARUP
 Epping Forest District Council

Drawing No. Map 1
 Date: December 2017
 Scale: 1:14,000 @A3

Content
 Status of employment sites after site visits in Stapleford Abbots

Source: Esri, DigitalGlobe, GeoEye, Earthstar Geographics, CNES/Airbus DS, USDA, USGS, AEX, Getmapping, Aerogrid, IGN, IGP, swisstopo and the GIS User Community.

Contains Ordnance Survey & Royal Mail Data
 © Crown Copyright & Database Right 2016
 EFDC Licence No: 100018534 2016

Legend

- 2006 Local Plan Allocation
- Employment Land Review (2010) (ELR- site)
- SR- site (see Legend in Appendix D.1)
- Epping Forest District Council records (E- site)
- Site proceeds after site visit
- Site does not proceed after site visit
- Parish Boundary

N



Employment Land Supply Assessment

ARUP

Epping Forest District Council

Drawing No. Map 1

Date: December 2017

Scale: 1:16,000 @A3

Content

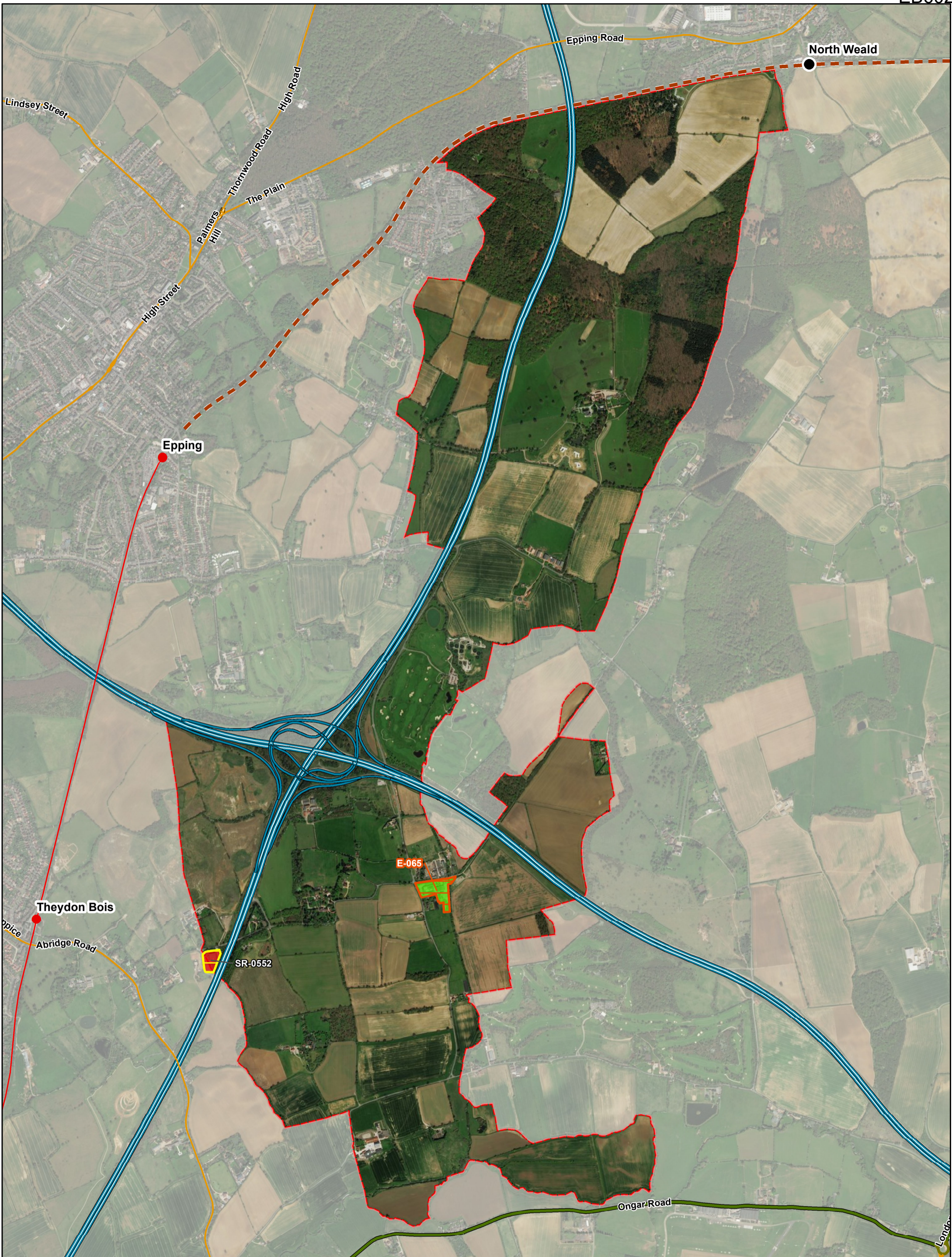
Status of employment sites after site visits in Theydon Bois

Source: Esri, DigitalGlobe, GeoEye, Earthstar Geographics, CNES/Airbus DS, USDA, USGS, AEX, Getmapping, Aerogrid, IGN, IGP, swisstopo and the GIS User Community

Contains Ordnance Survey & Royal Mail Data
© Crown Copyright & Database Right 2016
EFDC Licence No: 100018534 2016

- Legend**
- 2006 Local Plan Allocation
 - Employment Land Review (2010) (ELR- site)
 - SR- site (see Legend in Appendix D.1)
 - Epping Forest District Council records (E- site)

- Site proceeds after site visit
 - Site does not proceed after site visit
 - Parish Boundary
- N
▲



Employment Land Supply Assessment

ARUP

Epping Forest District Council

Drawing No. Map 1

Date: December 2017

Scale: 1:17,500 @A3

Content

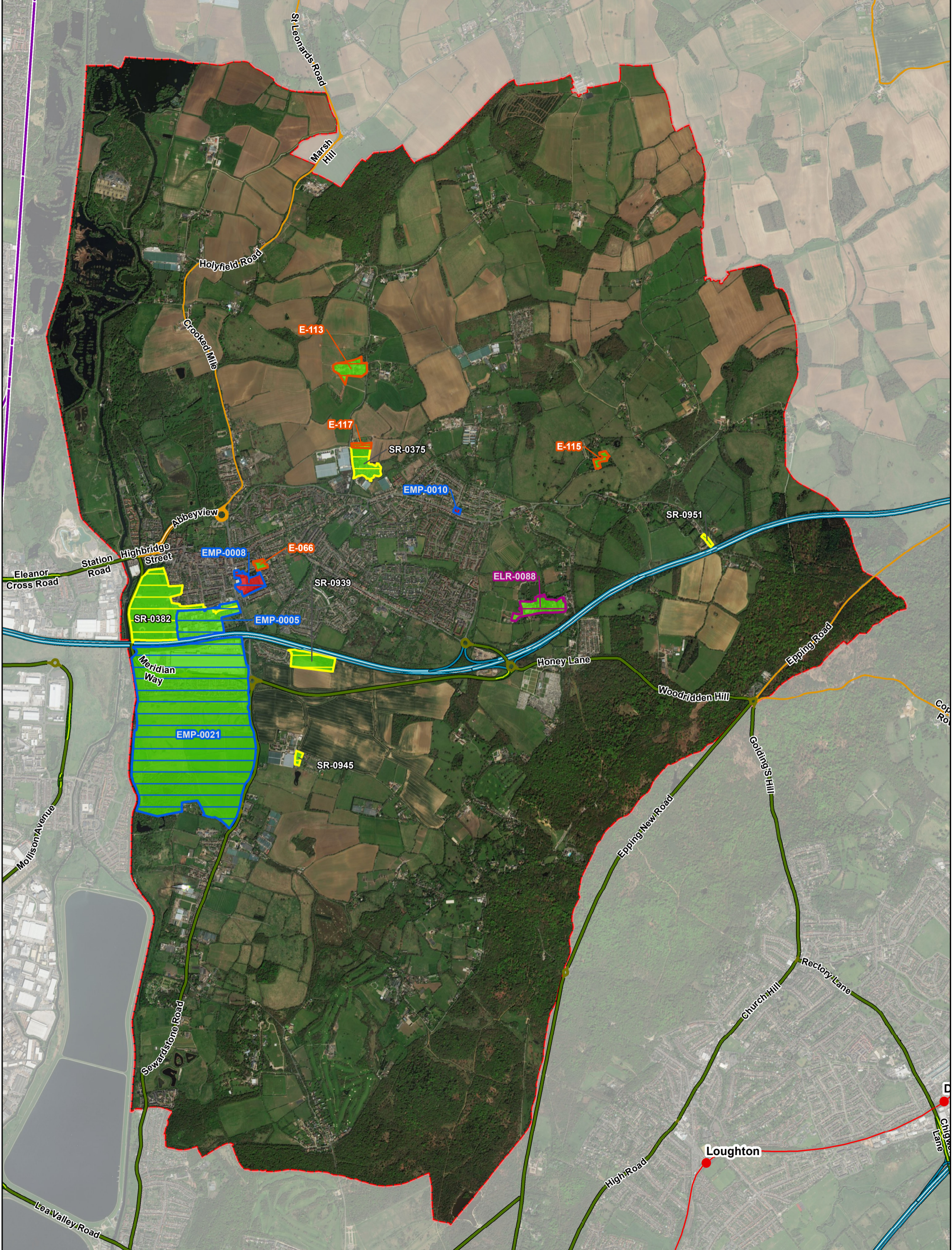
Status of employment sites after site visits in Theydon Garnon

Source: Esri, DigitalGlobe, GeoEye, Earthstar Geographics, CNES/Airbus DS, USDA, USGS, AEX, Getmapping, Aerogrid, IGN, IGP, swisstopo and the GIS User Community.

Contains Ordnance Survey & Royal Mail Data
© Crown Copyright & Database Right 2016
EFDC Licence No: 100018534 2016

- Legend**
- 2006 Local Plan Allocation
 - Employment Land Review (2010) (ELR- site)
 - SR- site (see Legend in Appendix D.1)
 - Epping Forest District Council records (E- site)

- Site proceeds after site visit
 - Site does not proceed after site visit
 - Parish Boundary
- N
-



Employment Land Supply Assessment
ARUP
 Epping Forest District Council

Drawing No. Map 1
 Date: December 2017
 Scale: 1:27,000 @A3

Content
 Status of employment sites after site visits in Waltham Abbey

Source: Esri, DigitalGlobe, GeoEye, Earthstar Geographics, CNES/Airbus DS, USDA, USGS, AEX, Getmapping, Aerogrid, IGN, IGP, swisstopo and the GIS User Community.

Contains Ordnance Survey & Royal Mail Data
 © Crown Copyright & Database Right 2016
 EFDC Licence No: 100018534 2016

- Legend**
- 2006 Local Plan Allocation
 - Employment Land Review (2010) (ELR- site)
 - SR- site (see Legend in Appendix D.1)
 - Epping Forest District Council records (E- site)

- Site proceeds after site visit
 - Site does not proceed after site visit
 - Parish Boundary
- N