

Appendix D6

Opportunities for Growth



Employment Land Supply Assessment

ARUP

Epping Forest District Council

Drawing No. Map 5

Date: December 2017

Scale: 1:21,500 @A3

Content

Opportunities for growth in Chigwell

Source: Esri, DigitalGlobe, GeoEye, Earthstar Geographics, CNES/Airbus DS, USDA, USGS, AEX, Getmapping, Aerogrid, IGN, IGP, swisstopo and the GIS User Community

Contains Ordnance Survey & Royal Mail Data
© Crown Copyright & Database Right 2016
EFDC Licence No: 100018534 2016

Legend

Sites with opportunity for regeneration	New sites with potential for development	Opportunity for expansion
Sites with opportunity for intensification	Sites with opportunity for expansion	Parish Boundary

N



Employment Land Supply Assessment

ARUP

Epping Forest District Council

Drawing No. Map 5

Date: December 2017

Scale: 1:21,500 @A3

Content

Opportunities for growth in High Ongar

Source: Esri, DigitalGlobe, GeoEye, Earthstar Geographics, CNES/Airbus DS, USDA, USGS, AEX, Getmapping, Aerogrid, IGN, IGP, swisstopo and the GIS User Community.

Contains Ordnance Survey & Royal Mail Data
© Crown Copyright & Database Right 2016
EFDC Licence No: 100018534 2016

Legend

Sites with opportunity for regeneration	New sites with potential for development	Opportunity for expansion
Sites with opportunity for intensification	Sites with opportunity for expansion	Parish Boundary

N



Employment Land Supply Assessment
ARUP
 Epping Forest District Council

Drawing No. Map 5
 Date: December 2017
 Scale: 1:20,500 @A3

Content
 Opportunities for growth in Loughton

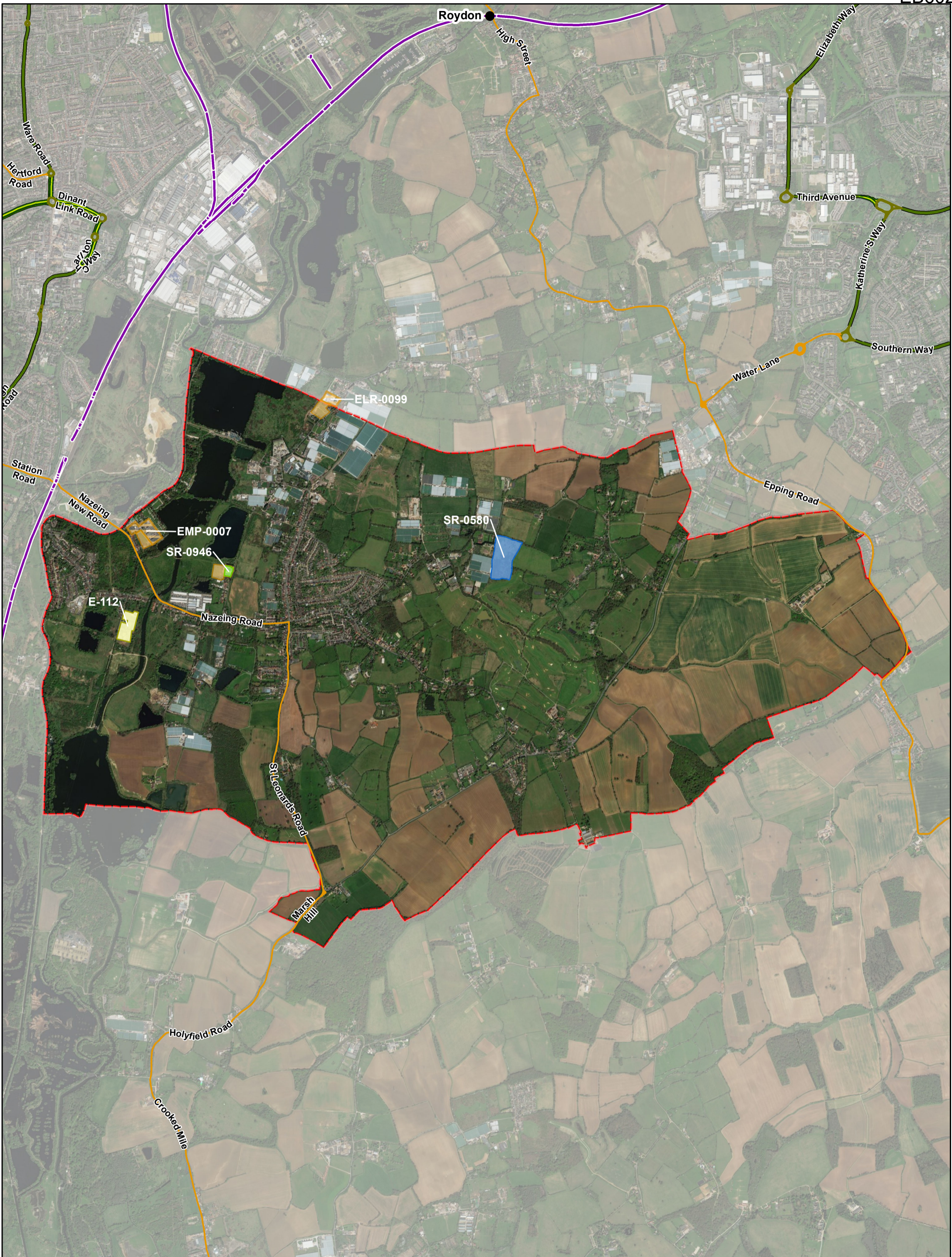
Source: Esri, DigitalGlobe, GeoEye, Earthstar Geographics, CNES/Airbus DS, USDA, USGS, AEX, Getmapping, Aerogrid, IGN, IGP, swisstopo and the GIS User Community

Contains Ordnance Survey & Royal Mail Data
 © Crown Copyright & Database Right 2016
 EFDC Licence No: 100018534 2016

Legend

Sites with opportunity for regeneration	New sites with potential for development	Opportunity for expansion
Sites with opportunity for intensification	Sites with opportunity for expansion	Parish Boundary

N



Employment Land Supply Assessment



Epping Forest District Council

Drawing No. Map 5

Date: December 2017

Scale: 1:24,500 @A3

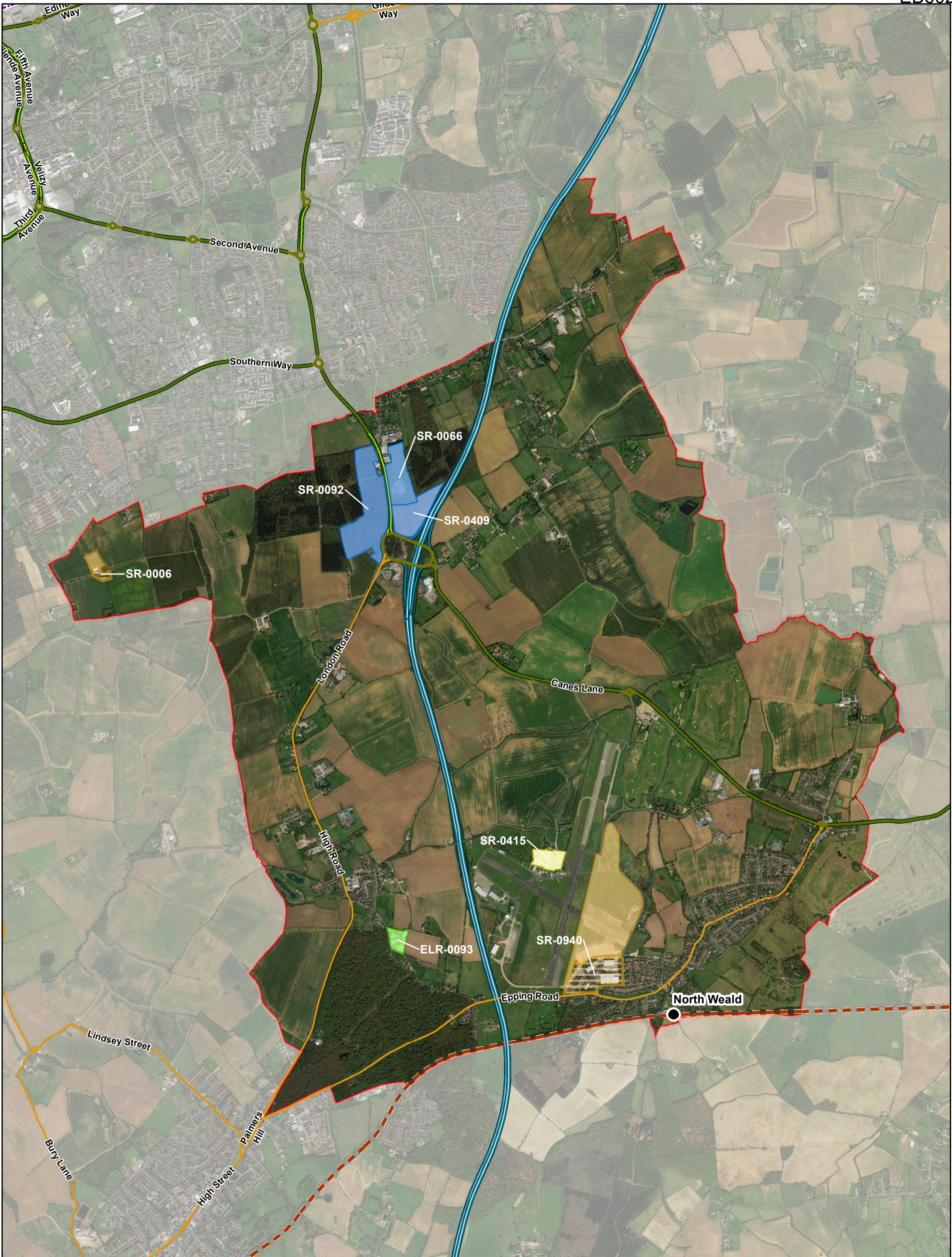
Content
Opportunities for growth in Nazeing

Source: Esri, DigitalGlobe, GeoEye, Earthstar Geographics, CNES/Airbus DS, USDA, USGS, AEX, Getmapping, Aerogrid, IGN, IGP, swisstopo and the GIS User Community
Contains Ordnance Survey & Royal Mail Data
© Crown Copyright & Database Right 2016
EFDC Licence No: 100018534 2016

Legend

- Sites with opportunity for regeneration
- New sites with potential for development
- Opportunity for expansion
- Sites with opportunity for intensification
- Sites with opportunity for expansion
- Parish Boundary





Employment Land Supply Assessment



Drawing No. Map 5
 Date: December 2017
 Scale: 1:25,000 @A3

Content

Opportunities for growth in North Weald Bassett
 Source: Esri, DigitalGlobe, GeoEye, Earthstar Geographics, CNES/Airbus DS, USDA, USGS, AEX, Getmapping, Aerogrid, IGN, IGP, swisstopo and the GIS User Community.
 Contains Ordnance Survey & Royal Mail Data
 © Crown Copyright & Database Right 2016
 EFDC Licence No: 100018534 2016

Legend

- Sites with opportunity for regeneration
- New sites with potential for development
- Opportunity for expansion
- Sites with opportunity for intensification
- Sites with opportunity for expansion
- Parish Boundary





Employment Land Supply Assessment



Epping Forest District Council

Drawing No. Map 5

Date: December 2017

Scale: 1:22,500 @A3

Content

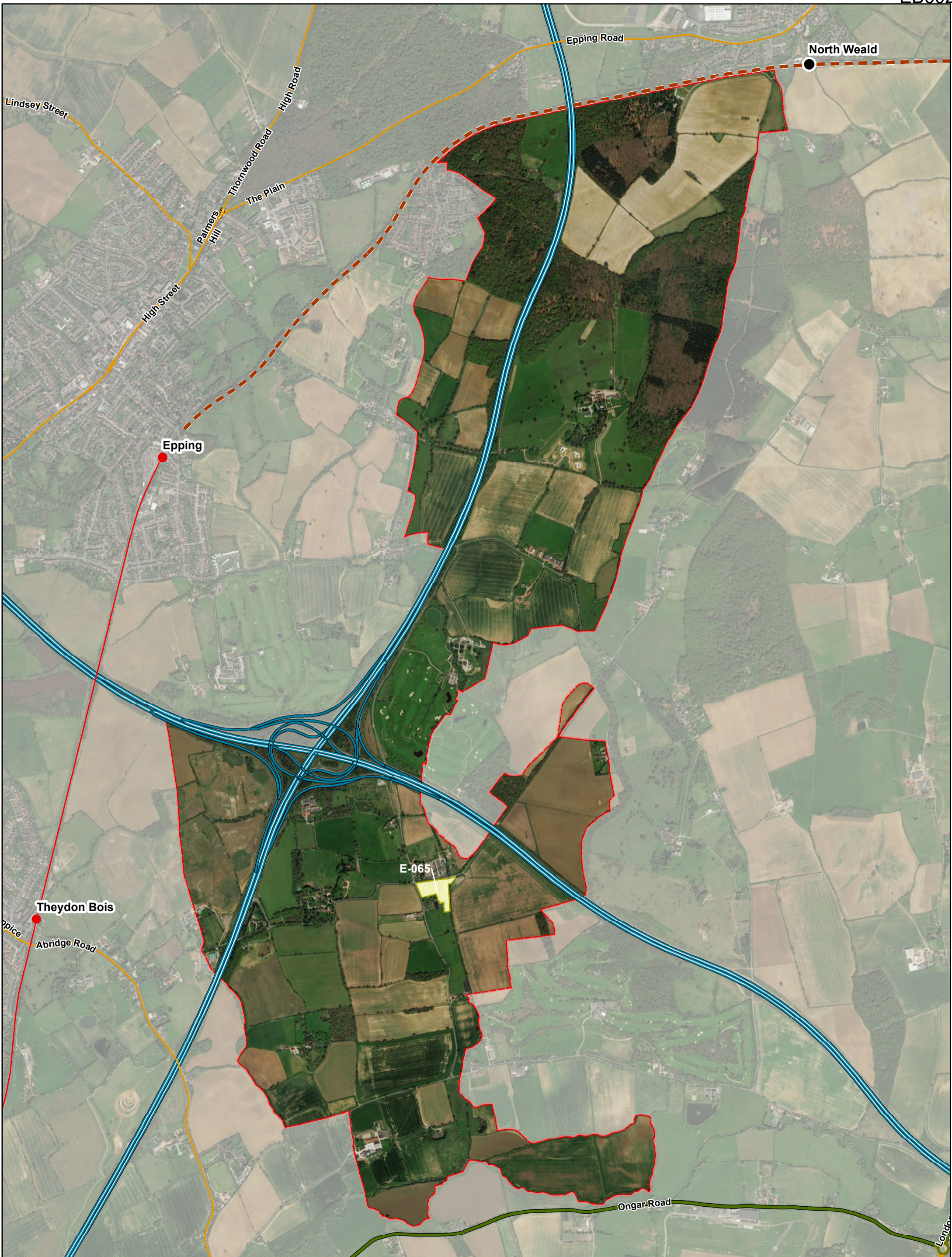
Opportunities for growth in Stanford Rivers

Source: Esri, DigitalGlobe, GeoEye, Earthstar Geographics, CNES/Airbus DS, USDA, USGS, AEX, Getmapping, Aerogrid, IGN, IGP, swisstopo and the GIS User Community
 Contains Ordnance Survey & Royal Mail Data
 © Crown Copyright & Database Right 2016
 EFDC Licence No: 100018534 2016

Legend

- Sites with opportunity for regeneration
- New sites with potential for development
- Opportunity for expansion
- Sites with opportunity for intensification
- Sites with opportunity for expansion
- Parish Boundary





Employment Land Supply Assessment

ARUP

Epping Forest District Council

Drawing No. Map 5

Date: December 2017

Scale: 1:17,500 @A3

Content

Opportunities for growth in Theydon Garnon

Source: Esri, DigitalGlobe, GeoEye, Earthstar Geographics, CNES/Airbus DS, USDA, USGS, AEX, Getmapping, Aerogrid, IGN, IGP, swisstopo and the GIS User Community.

Contains Ordnance Survey & Royal Mail Data
© Crown Copyright & Database Right 2016
EFDC Licence No: 100018534 2016

Legend

 Sites with opportunity for regeneration	 New sites with potential for development	 Opportunity for expansion
 Sites with opportunity for intensification	 Sites with opportunity for expansion	 Parish Boundary

N



Employment Land Supply Assessment



Epping Forest District Council

Drawing No. Map 5

Date: December 2017

Scale: 1:27,000 @A3

Content
Opportunities for growth in Waltham Abbey

Source: Esri, DigitalGlobe, GeoEye, Earthstar Geographics, CNES/Airbus DS, USDA, USGS, AEX, Getmapping, Aerogrid, IGN, IGP, swisstopo and the GIS User Community
Contains Ordnance Survey & Royal Mail Data
© Crown Copyright & Database Right 2016
EFDC Licence No: 100018534 2016

Legend

- Sites with opportunity for regeneration
- New sites with potential for development
- Opportunity for expansion
- Sites with opportunity for intensification
- Sites with opportunity for expansion
- Parish Boundary

